

## MODELS

Z85100-XL Series

# AQUASPEC® FAUCETS SINGLE FOOT PEDAL VALVE INSTALLATION INSTRUCTIONS



## TECHNICAL INFORMATION

Maximum pressure : 125 PSI  
Maximum temperature : 180 °F  
Cartridge style : Zurn self closing foot pedal cartridge

## RECOMMENDED INSTALLATION TOOLS AND SUPPLIES

- Tape Measure
- Ink Marker or Pencil
- Screwdriver
- Adjustable Wrench
- Drill with 1/4" Bit

## INSTALLATION INSTRUCTIONS

**Important:** Before installation, ensure supply lines are thoroughly flushed to remove debris. It is recommended to mount the foot pedal valve to a solid surface such as wood or studs. If installing in drywall, the pedal must not be mounted higher than 2 inches from the floor to minimize stress on plumbing.

### Steps:

1. Prepare the Installation Area
  - Ensure the wall surface is suitable for mounting. For best results, install on a solid surface.
  - If mounting on drywall, a reinforcement plate is recommended to ensure stability.
  - For concrete or metal walls, use appropriate anchors and fasteners.
2. Mount the Foot Pedal Valve
  - Remove the foot pedal valve from the carton.
  - Refer to mounting images on next page for mounting dimensions.
  - Securely mount the valve to the wall:
    - Wood/Studs: Use the provided wood screws.
    - Drywall: Use provided anchors and screws.
    - Concrete: Drill holes and insert concrete anchors before securing with masonry screws.
    - Metal: Use self-tapping metal screws or drill and insert metal anchors.
3. Connect the Outlet Piping
  - Attach the outlet piping to the 3/8" NPT port on the foot pedal valve. Ensure a secure connection.
4. Connect the Supply Piping
  - Connect the supply piping to the 1/2" NPT stops.
5. Turn on the Water & Check for Leaks
  - Slowly turn on the water supply.
  - Operate the foot pedal multiple times while checking all connections for leaks.
  - Adjust connections as needed to ensure a watertight seal.

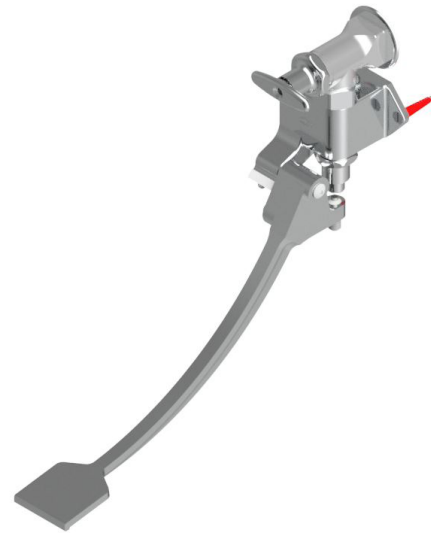
## MAINTENANCE

G67948 self-closing valve assembly (Item #1A or #6A) maintenance

- Remove self-closing valve assembly (Item #1A or #6A) using adjustable wrench. use care to avoid damaging the polished chrome finish
- Re-assemble self-closing valve to foot pedal valve body assembly
- Turn on water supply and test for function and leaks around self-closing valve assembly



Z85100-XL



Z85100-XL-WM

## CARE AND CLEANING INSTRUCTIONS

Zurn's aquaspec foot pedal valve has a highly polished nickel chrome plated finish. Clean with soap and water or a mild cleaner which is safe for chrome plating. Do not use acids or toilet bowl cleaner as they will damage the finish.

## REPLACEMENT PARTS

G67948 SELF CLOSING VALVE ASSEMBLY

**⚠ WARNING:** Cancer and Reproductive Harm - [www.P65Warnings.ca.gov](http://www.P65Warnings.ca.gov)

**⚠ ADVERTENCIA:** Cáncer y daño reproductivo - [www.P65Warnings.ca.gov](http://www.P65Warnings.ca.gov)

**⚠ AVERTISSEMENT:** Cancer et effets néfastes sur la reproduction - [www.P65Warnings.ca.gov](http://www.P65Warnings.ca.gov)

Rev. C | Date: 2/7/2025 | C.N. No. 146638 | Prod./Dwg. No. CF1498

Patent [zurn.com/patents](http://zurn.com/patents)

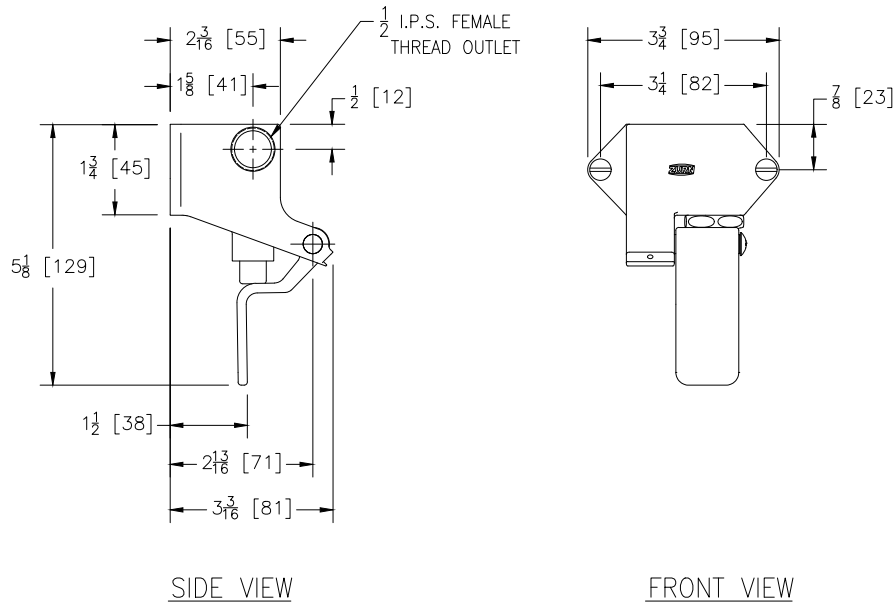
US 1.855.0NE.ZURN CANADA 1.877.892.5216

[ZURN.COM](http://ZURN.COM)

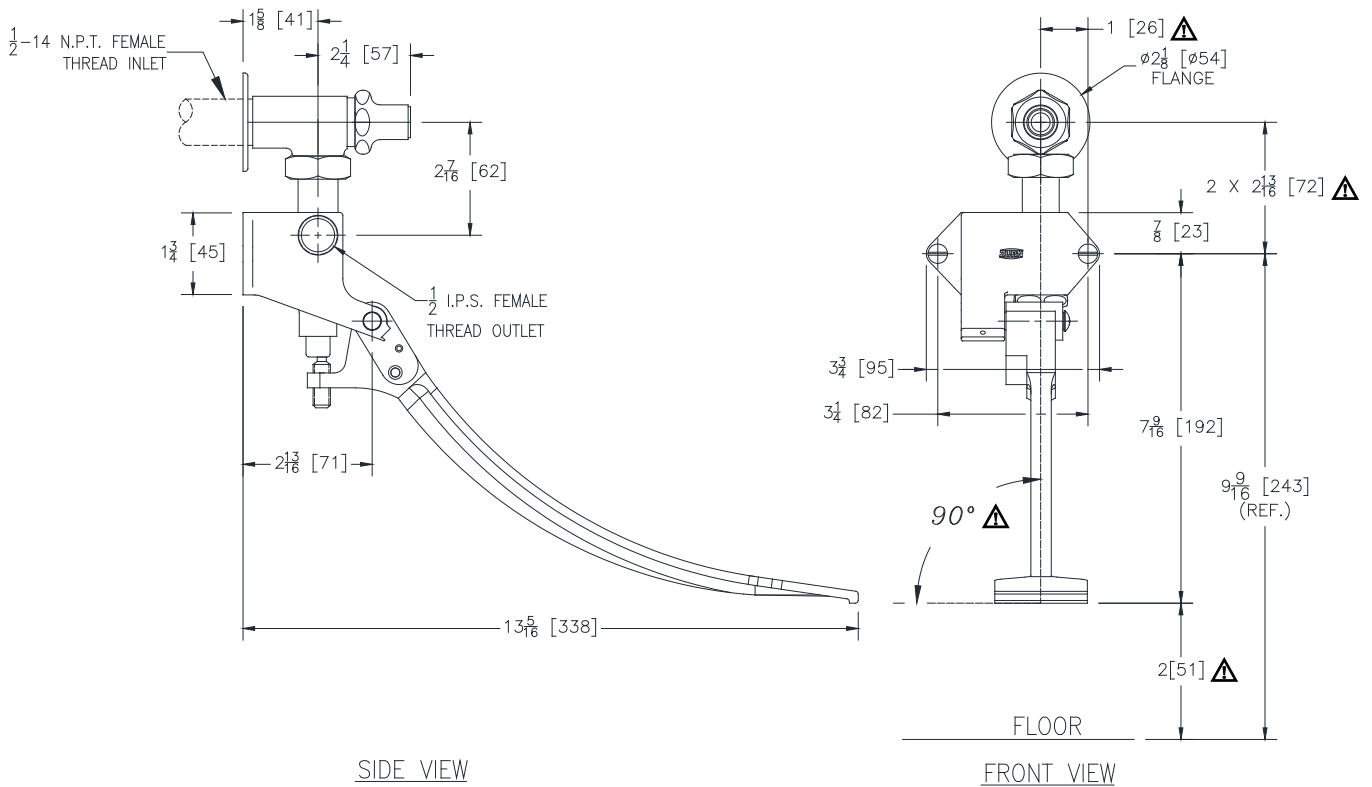
by **ZURN ELKAY** Water Solutions

Rough-in/Overview dimensions

Z85100-XL

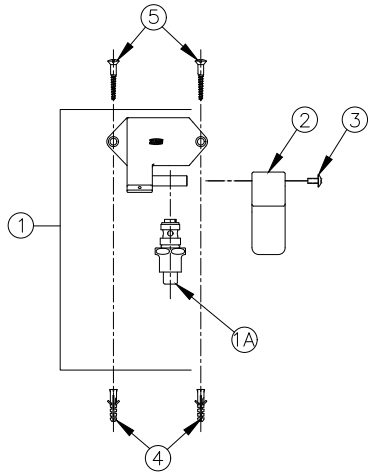


Z85100-XL-WM



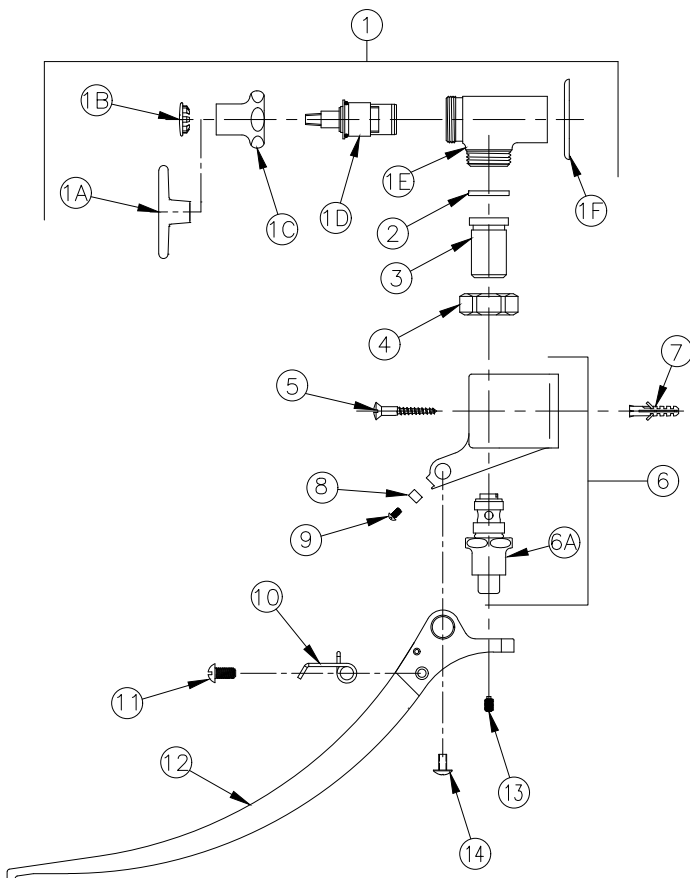
**⚠ CRITICAL DIMENSION:** Failure to properly align installation may result in stress on connection joints and leakage. Do not pull or bend piping to mate plumbing connections to fixture.

**Z85100-XL PICTURED**



Item	Part Number	Description	Qty.
1	G67965	Body	1
1A	G67948	Self Closing Valve Assembly	1
2	80348001	Short Foot Pedal	1
3	92345001	10-32 Screw	1
4	62359001	Wall Anchor	2
5	61817001	#12 1-1/2" Wood Screw	2

**Z85100-XL-WM PICTURED**



Item	Part Number	Description	Qty.
1	G67988	Foot Pedal Stop Assembly	1
1A	61551001	Tee Handle	1
1B	59667001	Plug	1
1C	60807001	Nut	1
1D	59517006	Hot Cartridge	1
1E	300597001	Stop Body	1
1F	62334001	Escutcheon	1
2	59748001	Gasket	1
3	60751003	Adapter	1
4	60752001	Nut	1
5	61817001	1-1/2" Flat Head Wood Screw	2
6	G67965	Body Assembly	1
6A	G67948	Self-Closing Valve Assembly	1
7	62359001	Wall Anchor	2
8	59744002	Plate	1
9	59742002	Screw	1
10	59738002	Spring (Right)	1
11	59742001	Screw	1
12	80428001	Pedal	1
13	60749001	Set Screw	1
14	92345001	10-32 Screw	1