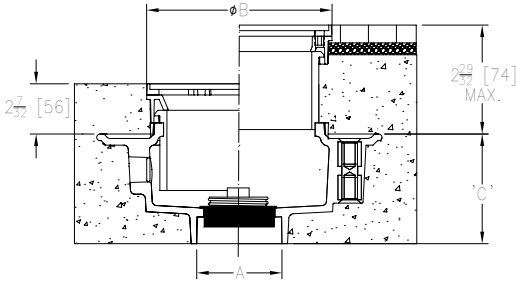




Design and Dimensional Data (inches and [ mm ]) are Subject to Manufacturing Tolerances and Change Without Notice



Body Type	Model Number	Dimensions in Inches [mm]			Approx. Wt. Lbs [kg]	Strainer Type
		A	B	C		
PVC	CO1-PV2	2" [51] x 3" [76]	5-3/16 [132]	3 [76]	4 lb [2 kg]	Nickel Bronze Round
	CO1-PV2-R6	2" [51] x 3" [76]	6 [152]	3 [76]	5 lb [2 kg]	Nickel Bronze Round
	CO1-PV2-SS	2" [51] x 3" [76]	5-3/16 [132]	3 [76]	4 lb [2 kg]	Stainless Steel Round
	CO1-PV2-R6-SS	2" [51] x 3" [76]	6 [152]	3 [76]	5 lb [2 kg]	Stainless Steel Round
	CO1-PV2-DI	2" [51] x 3" [76]	5-3/16 [132]	3 [76]	4 lb [2 kg]	Ductile Iron Round
	CO1-PV3	3" [76] x 4" [102]	5-3/16 [132]	3-3/4 [95]	4 lb [2 kg]	Nickel Bronze Round
	CO1-PV3-R6	3" [76] x 4" [102]	6 [152]	3-3/4 [95]	5 lb [2 kg]	Nickel Bronze Round
	CO1-PV3-SS	3" [76] x 4" [102]	5-3/16 [132]	3-3/4 [95]	4 lb [2 kg]	Stainless Steel Round
	CO1-PV3-R6-SS	3" [76] x 4" [102]	6 [152]	3-3/4 [95]	5 lb [2 kg]	Stainless Steel Round
	CO1-PV3-DI	3" [76] x 4" [102]	5-3/16 [132]	3-3/4 [95]	4 lb [2 kg]	Ductile Iron Round
	CO1-PV4	4" [102]	5-3/16 [132]	4 [102]	4 lb [2 kg]	Nickel Bronze Round
	CO1-PV4-R6	4" [102]	6 [152]	4 [102]	5 lb [2 kg]	Nickel Bronze Round
CO1-PV4-R6-SS	4" [102]	6 [152]	4 [102]	5 lb [2 kg]	Stainless Steel Round	
CO1-PV4-DI	4" [102]	5-3/16 [132]	4 [102]	4 lb [2 kg]	Ductile Iron Round	
ABS	CO1-AB2	2" [51] x 3" [76]	5-3/16 [132]	3 [76]	4 lb [2 kg]	Nickel Bronze Round
	CO1-AB2-R6	2" [51] x 3" [76]	6 [152]	3 [76]	5 lb [2 kg]	Nickel Bronze Round
	CO1-AB2-SS	2" [51] x 3" [76]	5-3/16 [132]	3 [76]	4 lb [2 kg]	Stainless Steel Round
	CO1-AB2-R6-SS	2" [51] x 3" [76]	6 [152]	3 [76]	5 lb [2 kg]	Stainless Steel Round
	CO1-AB2-DI	2" [51] x 3" [76]	5-3/16 [132]	3 [76]	4 lb [2 kg]	Ductile Iron Round
	CO1-AB3	3" [76] x 4" [102]	5-3/16 [132]	3-3/4 [95]	4 lb [2 kg]	Nickel Bronze Round
	CO1-AB3-R6	3" [76] x 4" [102]	6 [152]	3-3/4 [95]	5 lb [2 kg]	Nickel Bronze Round
	CO1-AB3-SS	3" [76] x 4" [102]	5-3/16 [132]	3-3/4 [95]	4 lb [2 kg]	Stainless Steel Round
	CO1-AB3-R6-SS	3" [76] x 4" [102]	6 [152]	3-3/4 [95]	5 lb [2 kg]	Stainless Steel Round
	CO1-AB3-DI	3" [76] x 4" [102]	5-3/16 [132]	3-3/4 [95]	4 lb [2 kg]	Ductile Iron Round
	CO1-AB4	4" [102]	5-3/16 [132]	4 [102]	4 lb [2 kg]	Nickel Bronze Round
	CO1-AB4-R6	4" [102]	6 [152]	4 [102]	5 lb [2 kg]	Nickel Bronze Round
CO1-AB4-SS	4" [102]	5-3/16 [132]	4 [102]	4 lb [2 kg]	Stainless Steel Round	
CO1-AB4-R6-SS	4" [102]	6 [152]	4 [102]	5 lb [2 kg]	Stainless Steel Round	
CO1-AB4-DI	4" [102]	5-3/16 [132]	4 [102]	4 lb [2 kg]	Ductile Iron Round	
Push On	CO1-PO2	2" [51]	5-3/16 [132]	4 [102]	7 lb [2 kg]	Nickel Bronze Round
	CO1-PO2-R6	2" [51]	6 [152]	4 [102]	8 lb [2 kg]	Nickel Bronze Round
	CO1-PO2-SS	2" [51]	5-3/16 [132]	4 [102]	7 lb [2 kg]	Stainless Steel Round
	CO1-PO2-R6-SS	2" [51]	6 [152]	4 [102]	8 lb [2 kg]	Stainless Steel Round
	CO1-PO2-DI	2" [51]	5-3/16 [132]	4 [102]	7 lb [2 kg]	Ductile Iron Round
	CO1-PO3	3" [76]	5-3/16 [132]	4 [102]	7 lb [2 kg]	Nickel Bronze Round
	CO1-PO3-SS	3" [76]	5-3/16 [132]	4 [102]	7 lb [2 kg]	Stainless Steel Round
	CO1-PO3-R6-SS	3" [76]	6 [152]	4 [102]	8 lb [2 kg]	Stainless Steel Round
	CO1-PO3-DI	3" [76]	5-3/16 [132]	4 [102]	7 lb [2 kg]	Ductile Iron Round
	CO1-PO4	4" [102]	5-3/16 [132]	4 [102]	7 lb [2 kg]	Nickel Bronze Round
	CO1-PO4-R6	4" [102]	6 [152]	4 [102]	8 lb [2 kg]	Nickel Bronze Round
	CO1-PO4-SS	4" [102]	5-3/16 [132]	4 [102]	7 lb [2 kg]	Stainless Steel Round
CO1-PO4-R6-SS	4" [102]	6 [152]	4 [102]	8 lb [2 kg]	Stainless Steel Round	
CO1-PO4-DI	4" [102]	5-3/16 [132]	4 [102]	7 lb [2 kg]	Ductile Iron Round	
No Hub	CO1-NH2	2" [51]	5-3/16 [132]	4 [102]	7 lb [2 kg]	Nickel Bronze Round
	CO1-NH2-R6	2" [51]	6 [152]	4 [102]	8 lb [2 kg]	Nickel Bronze Round
	CO1-NH2-SS	2" [51]	5-3/16 [132]	4 [102]	7 lb [2 kg]	Stainless Steel Round
	CO1-NH2-R6-SS	2" [51]	6 [152]	4 [102]	8 lb [2 kg]	Stainless Steel Round
	CO1-NH2-DI	2" [51]	5-3/16 [132]	4 [102]	7 lb [2 kg]	Ductile Iron Round
	CO1-NH3	3" [76]	5-3/16 [132]	4 [102]	7 lb [2 kg]	Nickel Bronze Round
	CO1-NH3-R6	3" [76]	6 [152]	4 [102]	8 lb [2 kg]	Nickel Bronze Round
	CO1-NH3-SS	3" [76]	5-3/16 [132]	4 [102]	7 lb [2 kg]	Stainless Steel Round
	CO1-NH3-R6-SS	3" [76]	6 [152]	4 [102]	8 lb [2 kg]	Stainless Steel Round
	CO1-NH3-DI	3" [76]	5-3/16 [132]	4 [102]	7 lb [2 kg]	Ductile Iron Round
	CO1-NH4	4" [102]	5-3/16 [132]	4 [102]	7 lb [2 kg]	Nickel Bronze Round
	CO1-NH4-R6	4" [102]	6 [152]	4 [102]	8 lb [2 kg]	Nickel Bronze Round
CO1-NH4-SS	4" [102]	5-3/16 [132]	4 [102]	7 lb [2 kg]	Stainless Steel Round	
CO1-NH4-R6-SS	4" [102]	6 [152]	4 [102]	8 lb [2 kg]	Stainless Steel Round	
CO1-NH4-DI	4" [102]	5-3/16 [132]	4 [102]	7 lb [2 kg]	Ductile Iron Round	

**ENGINEERING SPECIFICATION:**  
ZURN LC14 adjustable cleanout, PVC, ABS, or cast iron body, with solvent weld, push on, or no hub bottom outlet and gas tight churney plug.

**SUFFIXES**

- \_\_\_\_ -PB Polished Brass
- \_\_\_\_ -VP Vandal Proof

\* Regularly furnished unless otherwise specified

- ⚠ **WARNING:** Cancer and Reproductive Harm - [www.P65Warnings.ca.gov](http://www.P65Warnings.ca.gov)
- ⚠ **ADVERTENCIA:** Cáncer y daño reproductivo - [www.P65Warnings.ca.gov](http://www.P65Warnings.ca.gov)
- ⚠ **AVERTISSEMENT:** Cancer et effets néfastes sur la reproduction - [www.P65Warnings.ca.gov](http://www.P65Warnings.ca.gov)

Zurn Industries, LLC | Specification Drainage Operation  
1801 Pittsburgh Avenue, Erie, PA 16502, Ph. 855.663.9876

In Canada | Zurn Industries Limited  
7900 Goreway Drive, Unit 10, Brampton, Ontario L6T 5W6, Ph. 877.892.5216

Rev. D  
Date: 10/03/24  
C.N. No. 146373  
Prod. | Dwg. No. LC14