

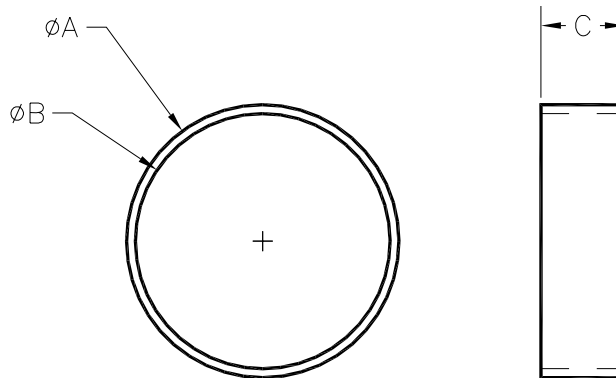


Annealed Copper Crimp Ring QCR_X

Specification Sheet

Tag _____

Dimensional Data: Inches and [mm] are subject to manufacturing tolerances and change without notice.



Part Number	Description	Nominal Size	'A'	'B'	'C'
QCR2X	3/8" Copper Crimp Ring	3/8"	0.63" [16]	0.51" [13]	0.33" [8]
QCR3X	1/2" Copper Crimp Ring	1/2"	0.75" [19]	0.64" [16]	0.33" [8]
QCR4X	3/4" Copper Crimp Ring	3/4"	1.00" [25]	0.89" [22]	0.33" [8]
QCR5X	1" Copper Crimp Ring	1"	1.25" [32]	1.15" [29]	0.37" [8]
QCR6X	1-1/4" Copper Crimp Ring	1-1/4"	1.50" [38]	1.39" [35]	0.55" [14]
QCR7X	1-1/2" Copper Crimp Ring	1-1/2"	1.78" [45]	1.71" [43]	0.65" [17]
QCR8X	2" Copper Crimp Ring	2"	2.30" [58]	2.23" [57]	0.75" [19]

Engineering Specification: ZurnPEX™ annealed copper crimp ring. Used to secure ZurnPEX™ tubing to Zurn® Qick/Sert 1™ and QickSert CR™ fittings.

Accessories

___ QCRT2CM	3/8" Medium Crimp Tool
___ QCRT3CM	1/2" Medium Crimp Tool
___ QCRT4CM	3/4" Medium Crimp Tool
___ QCRT2T	3/8" Large Crimp Tool
___ QCRT3T	1/2" Large Crimp Tool
___ QCRT4T	3/4" Large Crimp Tool
___ QCRT5T	1" Large Crimp Tool
___ QCQT23N	3/8" and 1/2" Close Quarters Crimp Tool
___ QCQT34N	1/2" and 3/4" Close Quarters Crimp Tool
___ QGA234P	3/8", 1/2", 3/4" Go/No Go Crimp Guage
___ QGA5N	1" Go/No Go Crimp Guage
___ QGA6	1-1/4" Go/No Go Crimp Guage
___ QGA7	1-1/2" Go/No Go Crimp Guage
___ QGA8	2" Go Crimp Guage
___ QCRBTKIT	3/8", 1/2", 3/4", and 1" Battery Powered Crimp Tool Kit
___ QCRBTKIT56	1" and 1-1/4" Battery Powered Crimp Tool Kit
___ QBJ6	1-1/4" Crimp Head
___ QBJ7	1-1/2" Crimp Head
___ QBJ8	2" Crimp Head

Rev. A	Date: 6/20/08	C.N. No. 98668
Dwg. No. 67518		Prod. No. QCR_X



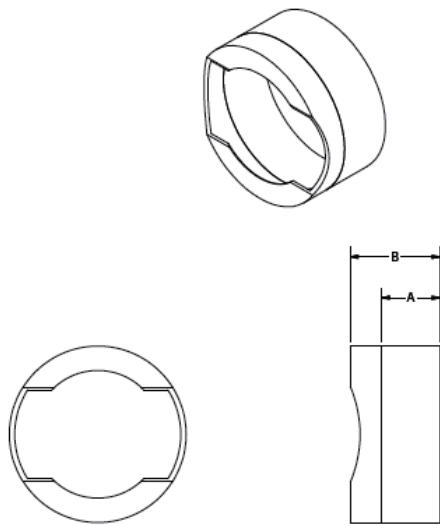
QCR_XPC

Zurn PEX® QickCap® Copper Crimp Ring

Specification Sheet

Tag _____

Dimensional Data (inches and [mm]) are subject to manufacturing tolerances and change without notice



Size	A	B
1/2"	0.32"	0.49"
3/4"	0.32"	0.49"
1"	0.37"	0.54"
1-1/4"	0.55"	0.82"
1-1/2"	0.65"	0.94"
2"	0.75"	1.14"

ENGINEERING SPECIFICATIONS

Zurn PEX QickCap® Copper Crimp Rings with Positioning End Cap are for use with Zurn PEX tubing and fittings in potable hot and cold water supply application for commercial and residential plumbing systems. The copper portion of the crimp ring meets the requirements of ASTM F1807. The QickCap Crimp Rings with Positioning End Cap are available for 1/2" - 2" Zurn PEX tube sizes.

ACCESSORIES

QCRT3CM	1/2" Medium Crimp Tool
QCRT4CM	3/4" Medium Crimp Tool
QCRT3T	1/2" Large Crimp Tool
QCRTJT	5/8" Large Crimp Tool
QCRT4T	3/4" Large Crimp Tool
QCRT5T	1" Large Crimp Tool
QCQT23N	3/8" and 1/2" Close Quarters Crimp Tool
QCQT34N	1/2" and 3/4" Close Quarters Crimp Tool
QGA234P	3/8", 1/2", 3/4" Go/No Go Crimp Gauge
QGA5N	1" Go/No Go Crimp Gauge
QGA6	1-1/4" Go/No Go Crimp Gauge
QGA7	1-1/2" Go/No Go Crimp Gauge
QGA8	2" Go Crimp Gauge
QCRBTKIT	3/8", 1/2", 3/4", and 1" Battery Powered Crimp Tool Kit
QCRBTKIT56	1" and 1-1/4" Battery Powered Crimp Tool Kit
QCRTLDM	Zurn PEX Large Diameter Compact Crimp Tool
QCRBKIT56-14V	Zurn PEX 14V Battery-Powered Crimp Tool Kit (1", 1 1/4")
QBJ6	1-1/4" Zurn PEX Crimp Head
QBJ7	1-1/2" Zurn PEX Crimp Head
QBJ8	2" Zurn PEX Crimp Head

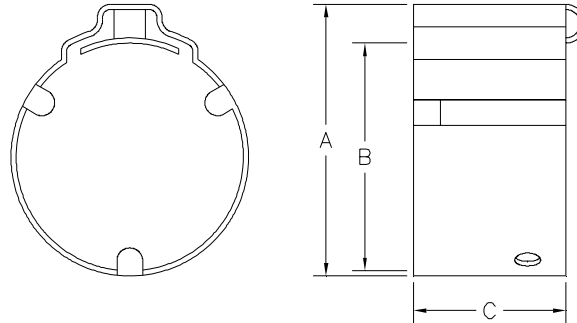
Product No	Description	Bag Qty.	Carton Qty.
QCR3XPC	1/2" PEX Copper Crimp Ring with Positioning Cap	100	1000
QCR4XPC	3/4" PEX Copper Crimp Ring with Positioning Cap	100	500
QCR5XPC	1" PEX Copper Crimp Ring with Positioning Cap	100	500
QCR6XPC	1-1/4" PEX Copper Crimp Ring with Positioning Cap	50	250
QCR7XPC	1-1/2" PEX Copper Crimp Ring with Positioning Cap	25	100
QCR8XPC	2" PEX Copper Crimp Ring with Positioning Cap	25	100



QickClamp™ Crimp Ring QCLP_X Specification Sheet

Tag _____

Dimensional Data: Inches and [mm] are subject to manufacturing tolerances and change without notice.



Part Number	Nominal Size	'A' in [mm]	'B' (ID) in [mm]	'C' (Thk.) in [mm]
QCLP2X	3/8"	0.65" [16.5]	0.52" [13.2]	0.50" [12.7]
QCLP3X	1/2"	0.79" [20.1]	0.64" [16.3]	0.50" [12.7]
QCLP4X	3/4"	1.06" [26.9]	0.89" [22.6]	0.50" [12.7]
QCLP5X	1"	1.32" [33.5]	1.14" [29.0]	0.50" [12.7]

Engineering Specification: ZurnPEX® QickClamp™ Crimp Rings. Stainless Steel (Type 304) mechanical fastener used to secure ZurnPEX® tubing to Zurn Qick/Sert1® and QickSert CR™ fittings. Integral locating flange and sight hole.

Accessories

- ___ **QCRTQCM** Medium QickClamp™ Crimp Tool
- ___ **QCRTQCRM** Medium Ratcheting QickClamp™ Crimp Tool

Rev B	Date: 08/25/09	C.N. No. 110127
Dwg. No. 82131		Prod. No. QCLP_X

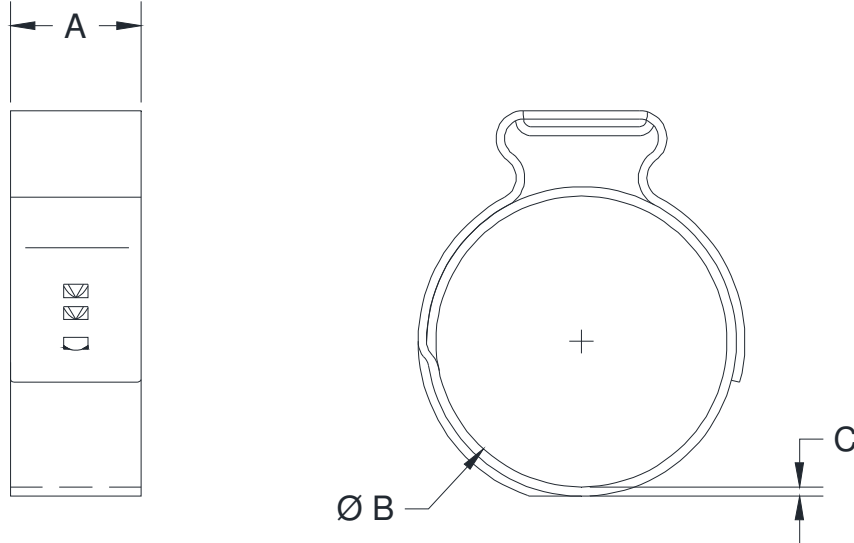


QSOETPG_X
PRE-GRIPPED STAINLESS STEEL CRIMP RING

SPECIFICATION SHEET

TAG _____

Dimensional Data (inches and [mm]) are Subject to Manufacturing Tolerances and Change Without Notice



Part Number	Nominal Size	Dimensions in In [mm]		
		A	B (ID)	C (Thk.)
QSOETPG3X	1/2"	0.276 [7]	0.622 [16]	0.031 [.8]
QSOETPG4X	3/4"	0.354 [9]	0.886 [23]	0.031 [.8]
QSOETPG5X	1"	0.394 [10]	1.132 [29]	0.039 [1]

Engineering Specification: Zurn® Pre-Gripped Stainless Steel Crimp Ring. Stainless Steel (Type 304) mechanical fastener used to secure ZurnPEX® tubing to Zurn Qick/Sert1™ fittings. The Pre-Gripped feature makes proper positioning of the ring easier and faster for the installer. Meets ASTM F2098.

Accessories

- ___ QSECRT Stainless Steel Crimp Ring Tool
- ___ QSECRTRM Ratcheting Stainless Steel Crimp Ring Tool

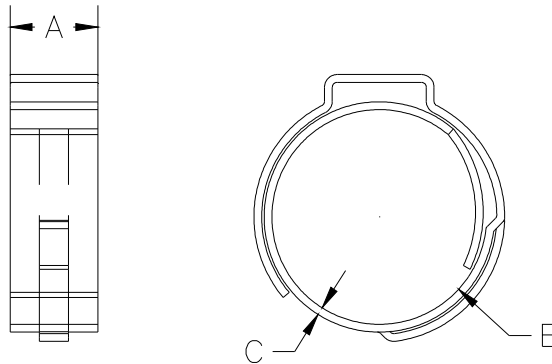


QSOET_X
STAINLESS STEEL CRIMP RING

SPECIFICATION SHEET

TAG _____

Dimensional Data (inches and [mm]) are Subject to Manufacturing Tolerances and Change Without Notice



Part Number	Nominal Size	Dimensions in In [mm]		
		A	B (ID)	C (Thk.)
QSOET2X	3/8"	0.276 [7]	0.524 [13]	0.024 [.6]
QSOETJX	5/8"	0.394 [10]	0.799 [20]	0.031 [.8]

Engineering Specification: Zurn® Stainless Steel Crimp Ring. Stainless Steel (Type 304) mechanical fastener used to secure ZurnPEX® tubing to Zurn Qick/Sert1™ fittings. Meets ASTM F2098.

Accessories

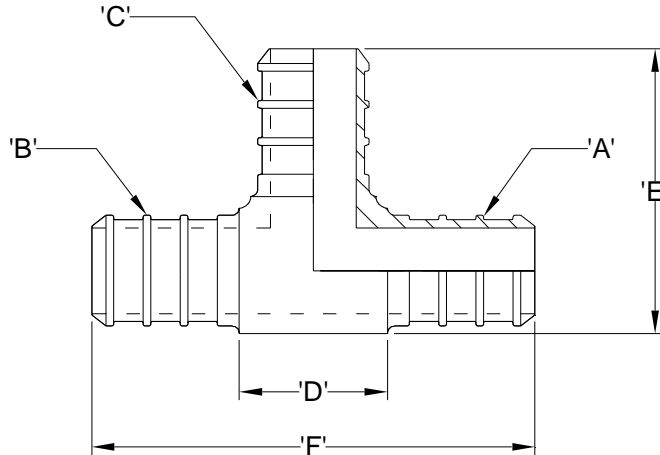
- ___ QSECR Stainless Steel Crimp Ring Tool
- ___ QSECRTRM Ratcheting Stainless Steel Crimp Ring Tool



Zurn PEX® XL-Low Lead Brass Barb Tee - QQT__GX Specification Sheet

Tag _____

Dimensional Data: Inches and [mm] are subject to manufacturing tolerances and change without notice.



NOTE: Barb geometry will vary depending upon barb size.

Part Number	Description	'A'	'B'	'C'	'D'	'E'	'F'
QQT333GX	1/2" Barb Tee	1/2" Barb	1/2" Barb	1/2" Barb	0.63" [16.0]	1.21" [30.7]	1.88" [47.7]
QQT334GX	1/2" Barb x 1/2" Barb x 3/4" Barb Tee	1/2" Barb	1/2" Barb	3/4" Barb	0.88" [22.4]	1.21" [30.7]	2.13" [54.1]
QQT433GX	3/4" Barb x 1/2" Barb x 1/2" Barb Tee	3/4" Barb	1/2" Barb	1/2" Barb	0.63" [16.0]	1.44" [36.6]	1.88" [47.7]
QQT434GX	3/4" Barb x 1/2" Barb x 3/4" Barb Tee	3/4" Barb	1/2" Barb	3/4" Barb	0.88" [22.4]	1.33" [33.9]	2.13" [54.1]
QQT443GX	3/4" Barb x 3/4" Barb x 1/2" Barb Tee	3/4" Barb	3/4" Barb	1/2" Barb	0.63" [16.0]	1.44" [36.6]	1.88" [47.7]
QQT444GX	3/4" Barb Tee	3/4" Barb	3/4" Barb	3/4" Barb	0.88" [22.4]	1.44" [36.6]	2.13" [54.1]
QQT544GX	1" Barb x 3/4" Barb x 3/4" Barb Tee	1" Barb	3/4" Barb	3/4" Barb	0.88" [22.4]	1.69" [43.0]	2.30" [58.4]
QQT553GX	1" Barb x 1" Barb x 1/2" Barb Tee	1" Barb	1" Barb	1/2" Barb	0.63" [16.0]	1.69" [43.0]	2.22" [56.4]
QQT554GX	1" Barb x 1" Barb x 3/4" Barb Tee	1" Barb	1" Barb	3/4" Barb	0.88" [22.4]	1.69" [43.0]	2.47" [62.7]
QQT555GX	1" Barb Tee	1" Barb	1" Barb	1" Barb	1.13" [28.7]	1.86" [47.2]	2.72" [69.1]
QQT663GX	1-1/4" Barb x 1-1/4" Barb x 1/2" Barb Tee	1-1/4" Barb	1-1/4" Barb	1/2" Barb	0.63" [16.0]	1.94" [49.3]	2.93" [74.4]
QQT664GX	1-1/4" Barb x 1-1/4" Barb x 3/4" Barb Tee	1-1/4" Barb	1-1/4" Barb	3/4" Barb	1.00" [25.4]	1.94" [49.3]	3.30" [83.8]
QQT666GX	1-1/4" Barb Tee	1-1/4" Barb	1-1/4" Barb	1-1/4" Barb	1.50" [38.1]	2.46" [62.5]	3.80" [96.5]
QQT774GX	1-1/2" Barb x 1-1/2" Barb x 3/4" Barb Tee	1-1/2" Barb	1-1/2" Barb	3/4" Barb	0.88" [22.4]	2.15" [54.6]	3.18" [80.8]
QQT775GX	1-1/2" Barb x 1-1/2" Barb x 1" Barb Tee	1-1/2" Barb	1-1/2" Barb	1" Barb	1.13" [28.7]	2.32" [58.9]	3.43" [87.1]
QQT777GX	1-1/2" Barb Tee	1-1/2" Barb	1-1/2" Barb	1-1/2" Barb	1.75" [44.5]	2.68" [68.1]	4.05" [102.9]
QQT885GX	2" Barb x 2" Barb x 1" Barb Tee	2" Barb	2" Barb	1" Barb	1.13" [28.7]	2.74" [69.6]	4.13" [104.9]
QQT888GX	2" Barb Tee	2" Barb	2" Barb	2" Barb	2.20" [55.9]	3.44" [87.4]	5.20" [132.1]

Engineering Specification: Zurn PEX® XL-Low Lead Brass Barb Tee. The QQT__GX is used to branch off the main line or change direction. Manufactured from EcoBrass®, C69300. These fittings, as a system with Zurn PEX® tube, are pressure rated at 160 PSI at 73°F, 100 PSI at 180°F, and 80 PSI at 200°F. These fittings are listed by NSF as complying with the following standards: NSF/ANSI Standard 14, NSF/ANSI Standard 61 including Annex G, ASTM F877, CSA B137.5, and ASTM F1807.

Accessories

- ___ QCLP3X 1/2" QuickClamp® Crimp Ring
- ___ QCLP4X 3/4" QuickClamp® Crimp Ring
- ___ QCLP5X 1" QuickClamp® Crimp Ring
- ___ QCR3X 1/2" Copper Crimp Ring
- ___ QCR4X 3/4" Copper Crimp Ring
- ___ QCR5X 1" Copper Crimp Ring
- ___ QCR6X 1-1/4" Copper Crimp Ring
- ___ QCR7X 1-1/2" Copper Crimp Ring
- ___ QCR8X 2" Copper Crimp Ring
- ___ QSOET3X 1/2" Stainless Steel Crimp Ring
- ___ QSOET4X 3/4" Stainless Steel Crimp Ring
- ___ QSOET5X 1" Stainless Steel Crimp Ring

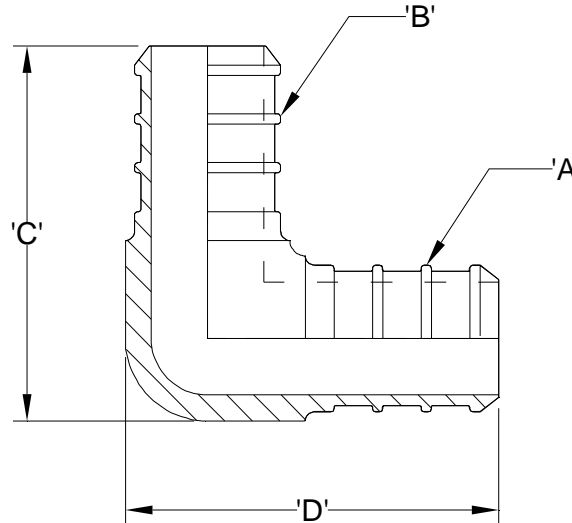
Rev. _____ Date: 2/22/10 C.N. No. 110729
Dwg. No. 84483 Prod. No. QQT__GX



Zurn PEX® XL-Low Lead Brass Barb Elbow - QQE_GX Specification Sheet

Tag _____

Dimensional Data: Inches and [mm] are subject to manufacturing tolerances and change without notice.



NOTE: Barb geometry will vary depending upon barb size.

Part Number	Description	'A'	'B'	'C'	'D'
QQE33GX	1/2" Barb x 1/2" Barb Elbow	1/2" Barb	1/2" Barb	1.21" [30.7]	1.20" [30.5]
QQE43GX	3/4" Barb x 1/2" Barb Elbow	3/4" Barb	1/2" Barb	1.44" [36.6]	1.20" [30.5]
QQE44GX	3/4" Barb x 3/4" Barb Elbow	3/4" Barb	3/4" Barb	1.44" [36.6]	1.43" [36.3]
QQE55GX	1" Barb x 1" Barb Elbow	1" Barb	1" Barb	1.86" [47.2]	1.82" [46.2]
QQE66GX	1-1/4" Barb x 1-1/4" Barb Elbow	1-1/4" Barb	1-1/4" Barb	2.46" [62.5]	2.46" [62.5]
QQE77GX	1-1/2" Barb x 1-1/2" Barb Elbow	1-1/2" Barb	1-1/2" Barb	2.68" [68.1]	2.68" [68.1]
QQE88GX	2" Barb x 2" Barb Elbow	2" Barb	2" Barb	3.44" [87.4]	3.44" [87.4]

Engineering Specification: Zurn PEX® XL-Low Lead Brass Barb Elbow. The QQE_GX is used to make sharp 90° bends. Manufactured from EcoBrass®, C69300. These fittings, as a system with Zurn PEX® tube, are pressure rated at 160 PSI at 73°F, 100 PSI at 180°F, and 80 PSI at 200°F. These fittings are listed by NSF as complying with the following standards: NSF/ANSI Standard 14, NSF/ANSI Standard 61 including Annex G, ASTM F877, CSA B137.5, and ASTM F1807.

Accessories

___ QCLP3X	1/2" QuickClamp® Crimp Ring
___ QCLP4X	3/4" QuickClamp® Crimp Ring
___ QCLP5X	1" QuickClamp® Crimp Ring
___ QCR3X	1/2" Copper Crimp Ring
___ QCR4X	3/4" Copper Crimp Ring
___ QCR5X	1" Copper Crimp Ring
___ QCR6X	1-1/4" Copper Crimp Ring
___ QCR7X	1-1/2" Copper Crimp Ring
___ QCR8X	2" Copper Crimp Ring
___ QSOET3X	1/2" Stainless Steel Crimp Ring
___ QSOET4X	3/4" Stainless Steel Crimp Ring
___ QSOET5X	1" Stainless Steel Crimp Ring

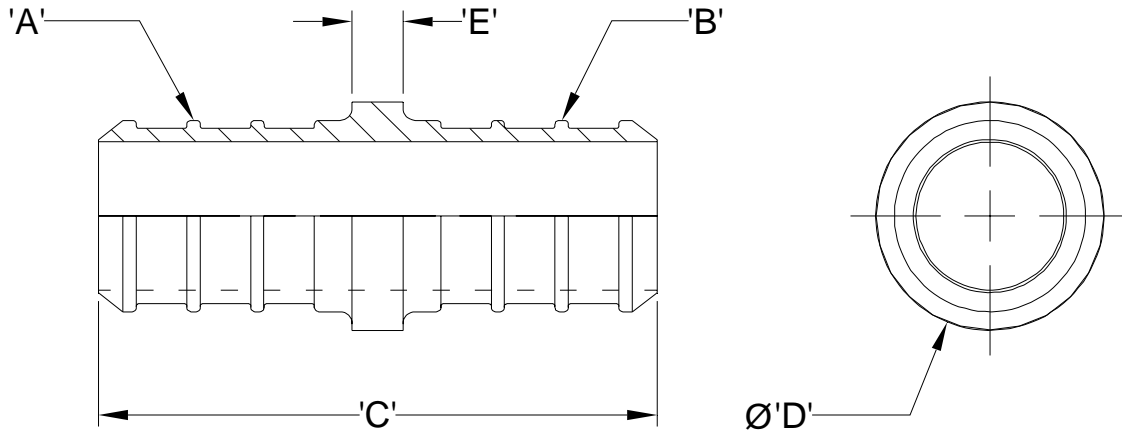
Rev.	Date: 2/22/10	C.N. No. 110732
Dwg. No. 84486	Prod. No. QQE_GX	



Zurn PEX® XL-Low Lead Brass Barb Coupling - QQC_GX Specification Sheet

Tag _____

Dimensional Data: Inches and [mm] are subject to manufacturing tolerances and change without notice.



NOTE: Barb geometry will vary depending upon barb size.

Part Number	Description	'A'	'B'	'C'	'D'	'E'
QQC22GX	3/8" Barb x 3/8" Barb Coupling	3/8" Barb	3/8" Barb	1.38" [35.0]	0.44" [11.1]	.013" [3.2]
QQC32GX	1/2" Barb x 3/8" Barb Coupling	1/2" Barb	3/8" Barb	1.38" [35.0]	0.56" [14.3]	.013" [3.2]
QQC33GX	1/2" Barb x 1/2" Barb Coupling	1/2" Barb	1/2" Barb	1.38" [35.0]	0.56" [14.3]	.013" [3.2]
QQC43GX	3/4" Barb x 1/2" Barb Coupling	3/4" Barb	1/2" Barb	1.38" [35.0]	0.81" [20.6]	.013" [3.2]
QQC44GX	3/4" Barb x 3/4" Barb Coupling	3/4" Barb	3/4" Barb	1.38" [35.0]	0.81" [20.6]	.013" [3.2]
QQC54GX	1" Barb x 3/4" Barb Coupling	1" Barb	3/4" Barb	1.55" [39.2]	1.00" [25.4]	.013" [3.2]
QQC55GX	1" Barb x 1" Barb Coupling	1" Barb	1" Barb	1.72" [43.6]	1.00" [25.4]	.013" [3.2]
QQC65GX	1-1/4" Barb x 1" Barb Coupling	1-1/4" Barb	1" Barb	2.20" [51.6]	1.12" [28.4]	0.25" [6.4]
QQC66GX	1-1/4" Barb x 1-1/4" Barb Coupling	1-1/4" Barb	1-1/4" Barb	2.55" [64.8]	1.12" [28.4]	0.25" [6.4]
QQC76GX	1-1/2" Barb x 1-1/4" Barb Coupling	1-1/2" Barb	1-1/4" Barb	2.55" [64.8]	1.30" [33.0]	0.25" [6.4]
QQC77GX	1-1/2" Barb x 1-1/2" Barb Coupling	1-1/2" Barb	1-1/2" Barb	2.55" [64.8]	1.30" [33.0]	0.25" [6.4]
QQC87GX	2" Barb x 1-1/2" Barb Coupling	2" Barb	1-1/2" Barb	3.02" [76.7]	1.68" [42.7]	0.37" [9.4]
QQC88GX	2" Barb x 2" Barb Coupling	2" Barb	2" Barb	3.37" [85.6]	1.68" [42.7]	0.37" [9.4]

Engineering Specification: Zurn PEX® XL-Low Lead Brass Barb Coupling. The QQC_GX is used to connect two separate pieces of PEX tubing. Manufactured from EcoBrass®, C69300. These fittings, as a system with Zurn PEX® tube, are pressure rated at 160 PSI at 73°F, 100 PSI at 180°F, and 80 PSI at 200°F. These fittings are listed by NSF as complying with the following standards: NSF/ANSI Standard 14, NSF/ANSI Standard 61 including Annex G, ASTM F877, CSA B137.5, and ASTM F1807.

Accessories

- ___ QCLP2X 3/8" QuickClamp® Crimp Ring
- ___ QCLP3X 1/2" QuickClamp® Crimp Ring
- ___ QCLP4X 3/4" QuickClamp® Crimp Ring
- ___ QCLP5X 1" QuickClamp® Crimp Ring
- ___ QCR2X 3/8" Copper Crimp Ring
- ___ QCR3X 1/2" Copper Crimp Ring
- ___ QCR4X 3/4" Copper Crimp Ring
- ___ QCR5X 1" Copper Crimp Ring
- ___ QCR6X 1-1/4" Copper Crimp Ring
- ___ QCR7X 1-1/2" Copper Crimp Ring
- ___ QCR8X 2" Copper Crimp Ring
- ___ QSOET2X 3/8" Stainless Steel Crimp Ring
- ___ QSOET3X 1/2" Stainless Steel Crimp Ring
- ___ QSOET4X 3/4" Stainless Steel Crimp Ring
- ___ QSOET5X 1" Stainless Steel Crimp Ring

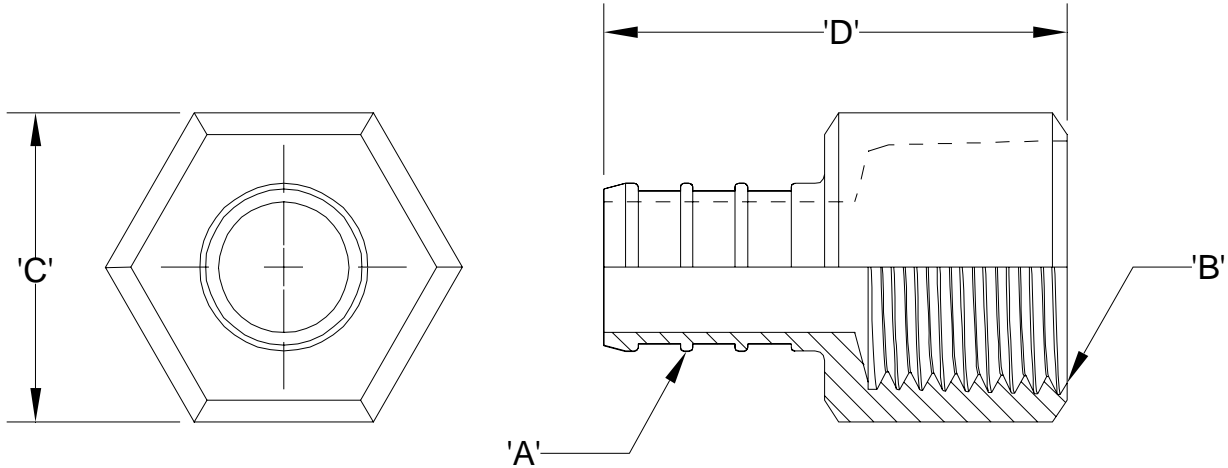
Rev.	Date: 2/22/10	C.N. No. 110727
Dwg. No. 84481	Prod. No. QQC_GX	



Zurn PEX® XL-Low Lead Brass Barb x FPT Non Swivel Adapter - QQUFC__GX Specification Sheet

Tag _____

Dimensional Data: Inches and [mm] are subject to manufacturing tolerances and change without notice.



NOTE: QQUFC55GX has eight sided head.

NOTE: Barb geometry will vary depending upon barb size.

Part Number	Description	'A'	'B'	'C'	'D'
QQUFC33GX	1/2" Barb x 1/2" FPT Non Swivel Adapter	1/2" Barb	1/2 -14 NPT	0.93" [23.6]	1.31" [33.3]
QQUFC34GX	1/2" Barb x 3/4" FPT Non Swivel Adapter	1/2" Barb	3/4 -14 NPT	1.12" [28.5]	1.38" [34.9]
QQUFC44GX	3/4" Barb x 3/4" FPT Non Swivel Adapter	3/4" Barb	3/4 -14 NPT	1.12" [28.5]	1.38" [34.9]
QQUFC55GX	1" Barb x 1" FPT Non Swivel Adapter	1" Barb	1"-11.5" NPT	1.41" [35.8]	1.67" [42.4]
QQUFC66GX	1-1/4" Barb x 1-1/4" FPT Non Swivel Adapter	1-1/4" Barb	1-1/4"-11.5" NPT	2.00" [50.8]	2.28" [57.9]
QQUFC77GX	1-1/2" Barb x 1-1/2" FPT Non Swivel Adapter	1-1/2" Barb	1-1/2"-11.5" NPT	2.30" [58.4]	2.30" [58.4]

Engineering Specification: Zurn PEX® XL-Low Lead Brass Barb x FPT Non Swivel Adapter. Used to connect PEX tubing to a male pipe thread. Manufactured from EcoBrass®, C69300. These fittings, as a system with Zurn PEX® tube, are pressure rated at 160 PSI at 73°F, 100 PSI at 180°F, and 80 PSI at 200°F. These fittings are listed by NSF as complying with the following standards: NSF/ANSI Standard 14, NSF/ANSI Standard 61 including Annex G, ASTM F877, CSA B137.5, and ASTM F1807.

Accessories

- ___ QCLP3X 1/2" QuickClamp® Crimp Ring
- ___ QCLP4X 3/4" QuickClamp® Crimp Ring
- ___ QCLP5X 1" QuickClamp® Crimp Ring
- ___ QCR3X 1/2" Copper Crimp Ring
- ___ QCR4X 3/4" Copper Crimp Ring
- ___ QCR5X 1" Copper Crimp Ring
- ___ QCR6X 1-1/4" Copper Crimp Ring
- ___ QCR7X 1-1/2" Copper Crimp Ring
- ___ QSOET3X 1/2" Stainless Steel Crimp Ring
- ___ QSOET4X 3/4" Stainless Steel Crimp Ring
- ___ QSOET5X 1" Stainless Steel Crimp Ring

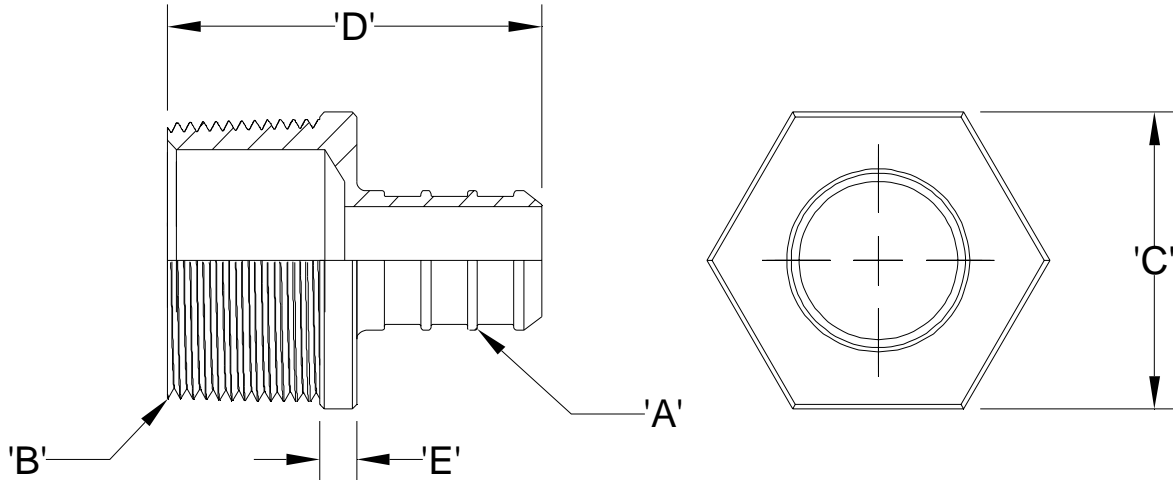
Rev. A	Date: 2/22/10	C.N. No.110736
Dwg. No. 84401	Prod. No. QQUFC__GX	



Zurn PEX® XL-Low Lead Brass Barb x MPT Adapter - QQMC_GX Specification Sheet

Tag _____

Dimensional Data: Inches and [mm] are subject to manufacturing tolerances and change without notice.



NOTE: Barb geometry will vary depending upon barb size.

Part Number	Description	'A'	'B'	'C'	'D'	'E'
QQMC33GX	1/2" Barb x 1/2" MPT	1/2" Barb	1/2" - 14 NPT	0.88" [22.4]	1.44" [36.6]	0.25" [6.4]
QQMC34GX	1/2" Barb x 3/4" MPT	1/2" Barb	3/4" - 14 NPT	1.06" [26.9]	1.56" [39.6]	0.31" [7.9]
QQMC43GX	3/4" Barb x 1/2" MPT	3/4" Barb	1/2" - 14 NPT	0.88" [22.4]	1.44" [36.6]	0.25" [6.4]
QQMC44GX	3/4" Barb x 3/4" MPT	3/4" Barb	3/4" - 14 NPT	1.06" [26.9]	1.56" [39.6]	0.31" [7.9]
QQMC45GX	3/4" Barb x 1" MPT	3/4" Barb	1" - 11.5 NPT	1.31" [33.3]	1.75" [44.5]	0.38" [9.7]
QQMC54GX	1" Barb x 3/4" MPT	1" Barb	3/4" - 14 NPT	1.06" [26.9]	1.73" [43.9]	0.31" [7.9]
QQMC55GX	1" Barb x 1" MPT	1" Barb	1" - 11.5 NPT	1.31" [33.3]	1.92" [48.8]	0.38" [9.7]
QQMC66GX	1-1/4" Barb x 1-1/4" MPT	1-1/4" Barb	1-1/4" - 11 NPT	1.75" [44.5]	2.63" [66.8]	0.38" [9.7]
QQMC77GX	1-1/2" Barb x 1-1/2" MPT	1-1/2" Barb	1-1/2" - 11.5 NPT	2.00" [50.8]	2.43" [61.7]	0.25" [6.4]
QQMC88GX	2" Barb x 2" MPT	2" Barb	2" - 11 NPT	2.44" [62.0]	3.06" [77.7]	0.50" [12.7]

Engineering Specification: Zurn PEX® XL-Low Lead Brass Barb x MPT Adapter. The QQMC_GX adapter is used to transition from female pipe thread to PEX tubing. Manufactured from EcoBrass®, C69300. These fittings, as a system with Zurn PEX® tube, are pressure rated at 160 PSI at 73°F, 100 PSI at 180°F, and 80 PSI at 200°F. These fittings are listed by NSF as complying with the following standards: NSF/ANSI Standard 14, NSF/ANSI Standard 61 including Annex G, ASTM F877, CSA B137.5, and ASTM F1807.

Accessories

- ___ QCLP3X 1/2" QuickClamp® Crimp Ring
- ___ QCLP4X 3/4" QuickClamp® Crimp Ring
- ___ QCLP5X 1" QuickClamp® Crimp Ring
- ___ QCR3X 1/2" Copper Crimp Ring
- ___ QCR4X 3/4" Copper Crimp Ring
- ___ QCR5X 1" Copper Crimp Ring
- ___ QCR6X 1-1/4" Copper Crimp Ring
- ___ QCR7X 1-1/2" Copper Crimp Ring
- ___ QCR8X 2" Copper Crimp Ring
- ___ QSOET3X 1/2" Stainless Steel Crimp Ring
- ___ QSOET4X 3/4" Stainless Steel Crimp Ring
- ___ QSOET5X 1" Stainless Steel Crimp Ring

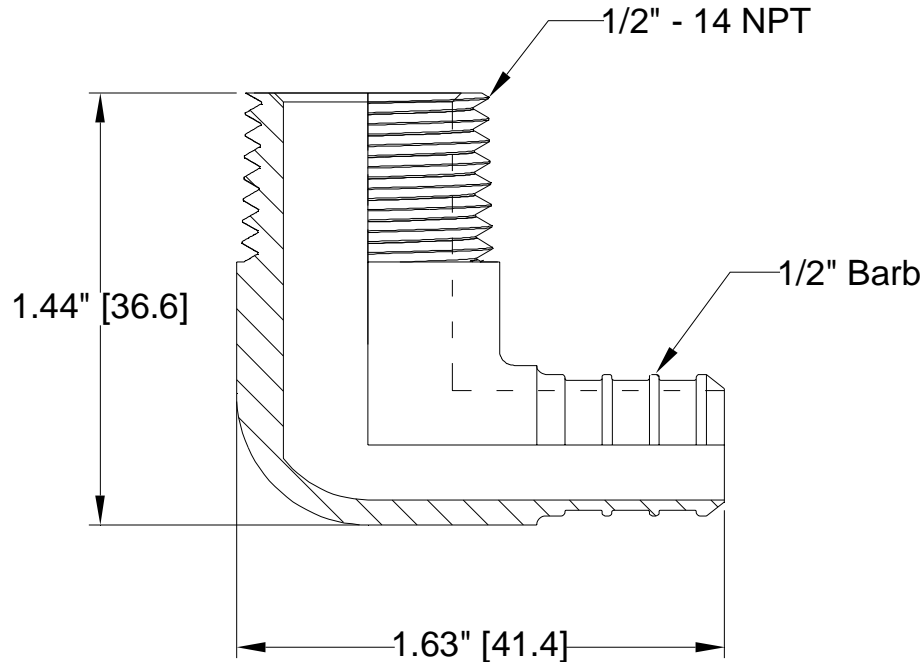
Rev.	Date: 2/22/10	C.N. No. 110733
Dwg. No. 84487	Prod. No. QQMC_GX	



Zurn PEX® XL-Low Lead Brass Barb x MPT Elbow - QQE33BTGX Specification Sheet

Tag _____

Dimensional Data: Inches and [mm] are subject to manufacturing tolerances and change without notice.



Engineering Specification: Zurn PEX® XL-Low Lead Brass Barb x MPT Elbow. The QQE33BTGX is used to make sharp 90° bends that transition from PEX pipe to a female pipe thread. Manufactured from EcoBrass®, C69300. These fittings, as a system with Zurn PEX® tube, are pressure rated at 160 PSI at 73°F, 100 PSI at 180°F, and 80 PSI at 200°F. These fittings are listed by NSF as complying with the following standards: NSF/ANSI Standard 14, NSF/ANSI Standard 61 including Annex G, ASTM F877, CSA B137.5, and ASTM F1807.

Accessories

— QCLP3X	1/2" QuickClamp® Crimp Ring
— QCR3X	1/2" Copper Crimp Ring
— QSOET3X	1/2" Stainless Steel Crimp Ring

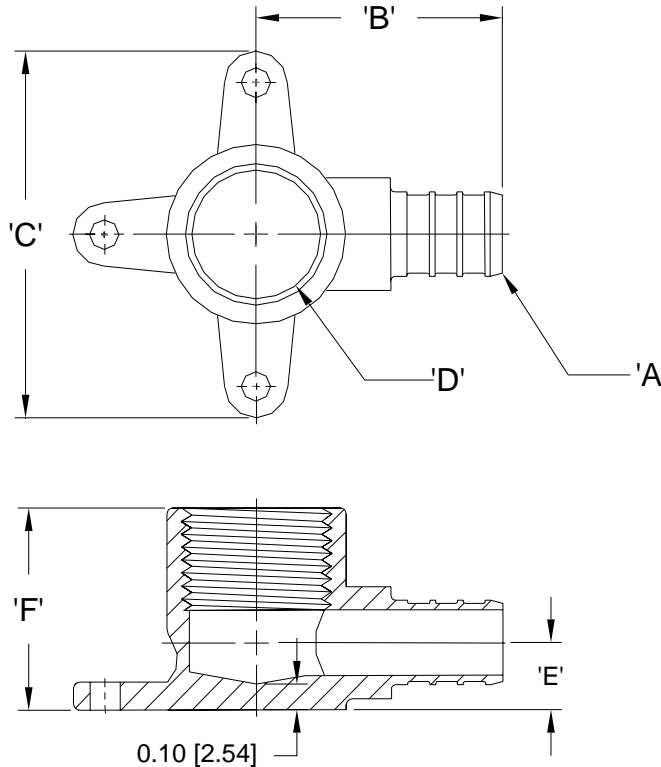
Rev.	Date: 2/22/10	C.N. No. 110730
Dwg. No. 84484		Prod. No. QQE33BTGX



Zurn PEX® XL-Low Lead Brass Drop Ear Elbow - QQDE__BFGX Specification Sheet

Tag _____

Dimensional Data: Inches and [mm] are subject to manufacturing tolerances and change without notice.



Part Number	Description	'A'	'B'	'C'	'D'	'E'	'F'
QQDE33BFGX	1/2" Barb X 1/2" FPT Drop Ear Elbow	1/2" Barb	1.38" [35.1]	2.05" [52.1]	1/2"-14 NPT	0.38" [9.5]	1.13" [28.7]
QQDE44BFGX	3/4" Barb X 3/4" FPT Drop Ear Elbow	3/4" Barb	1.49" [37.9]	2.04" [51.9]	3/4"-14 NPT	0.50" [12.7]	1.34" [34.0]

Engineering Specification: Zurn PEX® XL- Low Lead Drop Ear Elbow. The QQDE_BFGX is used to connect PEX to FPT drop ear elbow. Manufactured from EcoBrass®, C69300. These fittings, as a system with Zurn PEX® tube, are pressure rated at 160 PSI at 73°F, 100 PSI at 180°F, and 80 PSI at 200°F. These fittings are listed by NSF as complying with the following standards: NSF/ANSI Standard 14, NSF/ANSI Standard 61 including Annex G, ASTM F877, CSA B137.5, and ASTM F1807.

Accessories

- ___ QCLP3X 1/2" QuickClamp® Crimp Ring
- ___ QCLP4X 3/4" QuickClamp® Crimp Ring
- ___ QCR3X 1/2" Copper Crimp Ring
- ___ QCR4X 3/4" Copper Crimp Ring
- ___ QSOET3X 1/2" Stainless Steel Crimp Ring
- ___ QSOET4X 3/4" Stainless Steel Crimp Ring

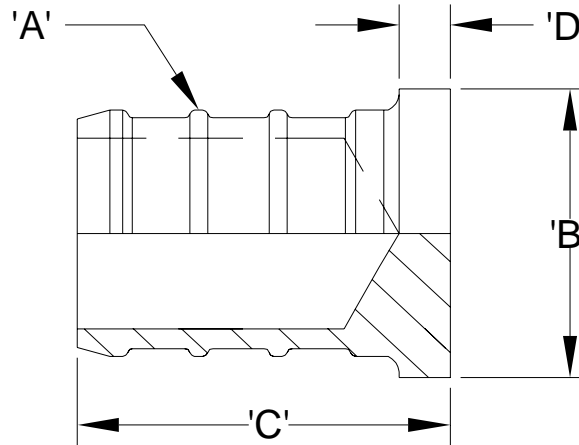
Rev. A Date: 2/22/10 C.N. No. 110745
Dwg. No. 84399 Prod. No. QQDE_BFGX



Zurn PEX® XL-Low Lead Brass Plugs - QQP_GX Specification Sheet

Tag _____

Dimensional Data: Inches and [mm] are subject to manufacturing tolerances and change without notice.



NOTE: Barb geometry will vary depending upon barb size.

Part Number	Description	'A'	'B'	'C'	'D'
QQP2GX	3/8" Barb Plug	3/8" Barb	0.41" [10.4]	0.75" [19.1]	0.13" [3.2]
QQP3GX	1/2" Barb Plug	1/2" Barb	0.56" [14.2]	0.75" [19.1]	0.13" [3.2]
QQP4GX	3/4" Barb Plug	3/4" Barb	0.81" [20.6]	0.75" [19.1]	0.13" [3.2]
QQP5GX	1" Barb Plug	1" Barb	1.00" [25.4]	0.92" [23.4]	0.13" [3.2]
QQP6GX	1-1/4" Barb Plug	1-1/4" Barb	1.38" [35.1]	1.40" [35.6]	0.25" [6.4]
QQP7GX	1-1/2" Barb Plug	1-1/2" Barb	1.63" [41.4]	1.40" [35.6]	0.25" [6.4]
QQP8GX	2" Barb Plug	2" Barb	1.68" [40.7]	1.87" [42.7]	0.37" [9.4]

Engineering Specification: Zurn PEX® XL-Low Lead Brass Plug. The QQP_GX allows for pressure testing of the system or a permanent stop. Manufactured from EcoBrass®, C69300. These fittings, as a system with Zurn PEX® tube, are pressure rated at 160 PSI at 73°F, 100 PSI at 180°F, and 80 PSI at 200°F. These fittings are listed by NSF as complying with the following standards: NSF/ANSI Standard 14, NSF/ANSI Standard 61 including Annex G, ASTM F877, CSA B137.5, and ASTM F1807.

Accessories

- ___ QCLP2X 3/8" QuickClamp® Crimp Ring
- ___ QCLP3X 1/2" QuickClamp® Crimp Ring
- ___ QCLP4X 3/4" QuickClamp® Crimp Ring
- ___ QCLP5X 1" QuickClamp® Crimp Ring
- ___ QCR2X 3/8" Copper Crimp Ring
- ___ QCR3X 1/2" Copper Crimp Ring
- ___ QCR4X 3/4" Copper Crimp Ring
- ___ QCR5X 1" Copper Crimp Ring
- ___ QCR6X 1-1/4" Copper Crimp Ring
- ___ QCR7X 1-1/2" Copper Crimp Ring
- ___ QCR8X 2" Copper Crimp Ring
- ___ QSOET2X 3/8" Stainless Steel Crimp Ring
- ___ QSOET3X 1/2" Stainless Steel Crimp Ring
- ___ QSOET4X 3/4" Stainless Steel Crimp Ring
- ___ QSOET5X 1" Stainless Steel Crimp Ring

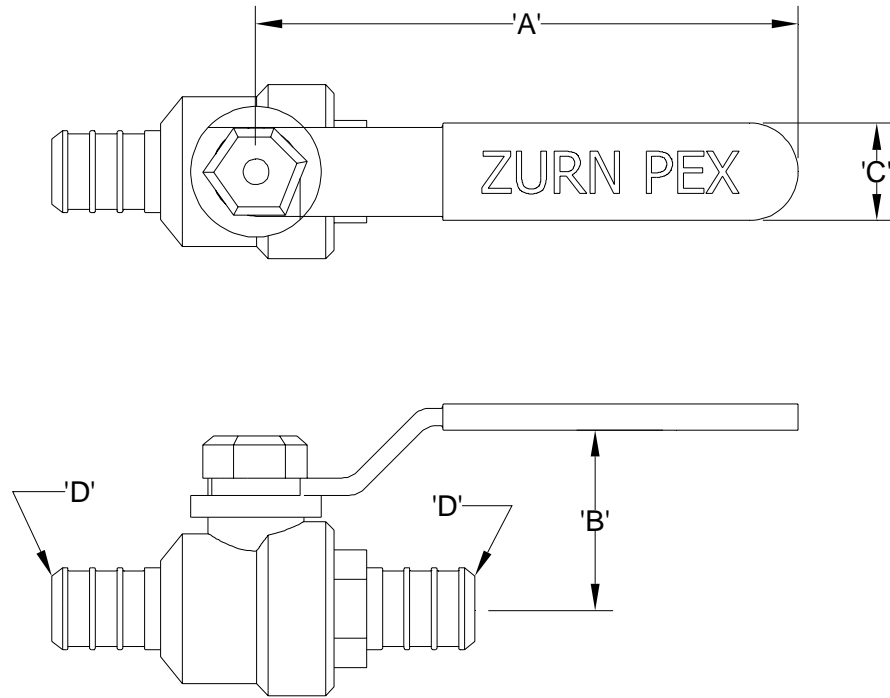
Rev. A	Date: 2/22/10	C.N. No. 110737
Dwg. No. 84400		Prod. No. QQP_GX



Zurn PEX® XL-Low Lead Brass Barb x Barb Lever Ball Valve - QQBV__GX Specification Sheet

Tag _____

Dimensional Data: Inches and [mm] are subject to manufacturing tolerances and change without notice.



Part Number	Description	'A'	'B'	'C'	'D'
QQBV33GX	1/2" Barb x 1/2" Barb Lever Handle Ball Valve	2.75" [69.9]	1.13" [28.6]	0.55" [14.0]	1/2" Barb
QQBV44GX	3/4" Barb x 3/4" Barb Lever Handle Ball Valve	3.75" [95.3]	1.75" [44.5]	0.65" [16.5]	3/4" Barb
QQBV55GX	1" Barb x 1" Barb Barb Lever Handle Ball Valve	4.25" [108.0]	1.88" [47.6]	0.65" [16.5]	1" Barb

Engineering Specification: Zurn PEX® XL-Low Lead Brass Barb x Barb Lever Handle Ball Valve. Manufactured from EcoBrass®, C69300. These fittings, as a system with Zurn PEX® tube, are pressure rated at 160 PSI at 73°F, 100 PSI at 180°F, and 80 PSI at 200°F. These fittings are listed as complying with the following standards: NSF/ANSI Standard 61 including Annex G, CSA B137.5, and ASTM F1807.

Accessories

- ___ QCLP3X 1/2" QuickClamp® Crimp Ring
- ___ QCLP4X 3/4" QuickClamp® Crimp Ring
- ___ QCLP5X 1" QuickClamp® Crimp Ring
- ___ QCR3X 1/2" Copper Crimp Ring
- ___ QCR4X 3/4" Copper Crimp Ring
- ___ QCR5X 1" Copper Crimp Ring
- ___ QSOET3X 1/2" Stainless Steel Crimp Ring
- ___ QSOET4X 3/4" Stainless Steel Crimp Ring
- ___ QSOET5X 1" Stainless Steel Crimp Ring

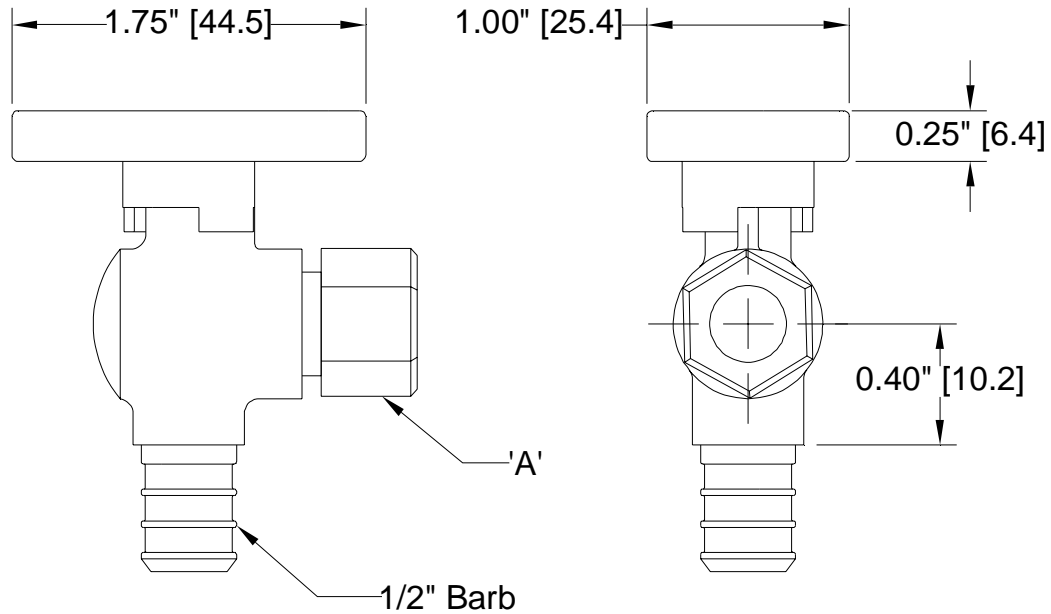
Rev. A Date: 2/22/10 C.N. No. 110744
DWG. No. 84403 Prod. No. QQBV__GX



Zurn PEX® XL-Low Lead Brass Quarter Turn Angle Stop Valve – QQTV__GX Specification Sheet

Tag _____

Dimensional Data: Inches and [mm] are subject to manufacturing tolerances and change without notice.



Part Number	Description	'A'
QQTV40GX	1/4 Turn Stop Valve - 1/2" Barb x 1/4" OD Comp.	1/4" OD Comp.
QQTV60GX	1/4 Turn Stop Valve - 1/2" Barb x 3/8" OD Comp.	3/8" OD Comp.

Engineering Specification: Zurn PEX® XL-Low Lead Brass Quarter-Turn Angle Stop Valve. The QQTV__GX has a 1/2" PEX barb inlet x compression outlet. Manufactured from EcoBrass®, C69300. These fittings, as a system with Zurn PEX® tube, are pressure rated at 160 PSI at 73°F, 100 PSI at 180°F, and 80 PSI at 200°F. These fittings are listed as complying with the following standards: NSF/ANSI Standard 61 including Annex G, CSA B137.5, and ASTM F1807.

Accessories

- ___ **QCLP3X** 1/2" QuickClamp® Crimp Ring
- ___ **QCR3X** 1/2" Copper Crimp Ring
- ___ **QSOET3X** 1/2" Stainless Steel Crimp Ring

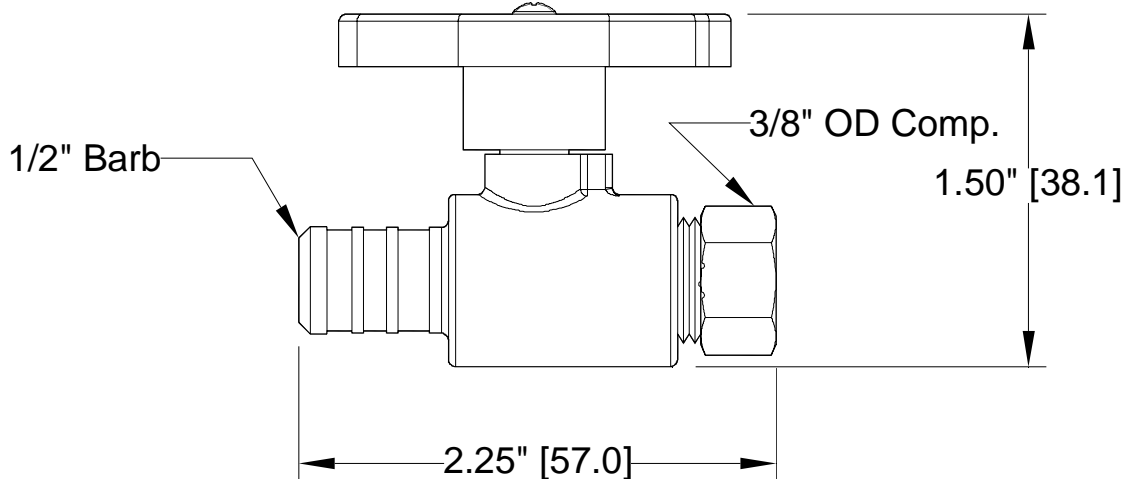
Rev. A	Date: 10/22/10	C.N. No. 110735
Dwg. No. 84406	Prod. No. QQTV__GX	



Zurn PEX® XL-Low Lead Brass Quarter-Turn Straight Stop Valve – QQTV60SGX Specification Sheet

Tag _____

Dimensional Data: Inches and [mm] are subject to manufacturing tolerances and change without notice.



Engineering Specification: Zurn PEX® XL-Low Lead Brass Quarter-Turn Straight Stop Valve. The QQTV60SGX has a 1/2" PEX barb inlet x 3/8" O.D. compression outlet. Manufactured from EcoBrass®, C69300. These fittings, as a system with Zurn PEX® tube, are pressure rated at 160 PSI at 73°F, 100 PSI at 180°F, and 80 PSI at 200°F. These fittings are listed as complying with the following standards: NSF/ANSI Standard 61 including Annex G, CSA B137.5, and ASTM F1807.

Accessories

- ___ QCLP3X 1/2" QuickClamp® Crimp Ring
- ___ QCR3X 1/2" Copper Crimp Ring
- ___ QSOET3X 1/2" Stainless Steel Crimp Ring

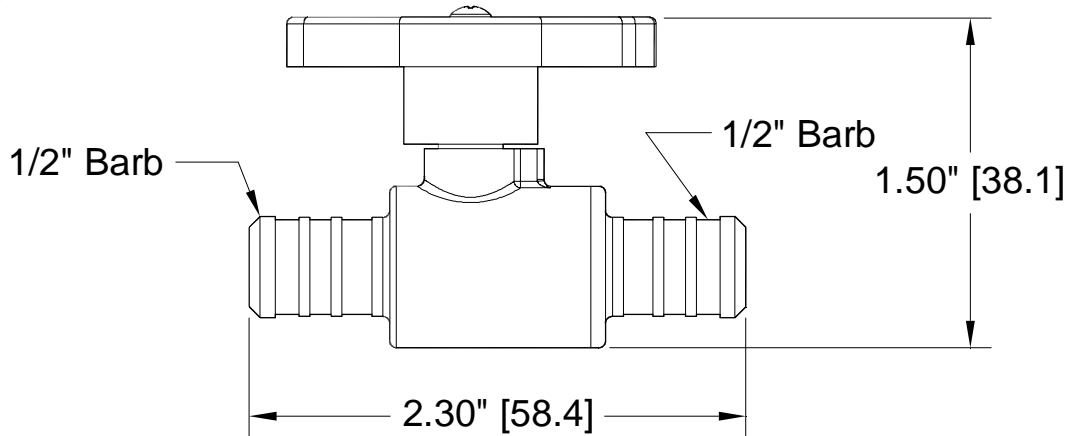
Rev. A	Date: 2/22/10	C.N. No.110746
Dwg. No. 84404		Prod. No. QQTV60SGX



Zurn PEX® XL-Low Lead Brass Quarter-Turn Straight Stop Valve – QQTV477GX Specification Sheet

Tag _____

Dimensional Data: Inches and [mm] are subject to manufacturing tolerances and change without notice.



Engineering Specification: Zurn PEX® XL-Low Lead Brass Quarter-Turn Straight Stop Valve. The QQTV477GX has a 1/2" PEX barb inlet x 1/2" PEX barb outlet. Manufactured from EcoBrass®, C69300. These fittings, as a system with Zurn PEX® tube, are pressure rated at 160 PSI at 73°F, 100 PSI at 180°F, and 80 PSI at 200°F. These fittings are listed as complying with the following standards: NSF/ANSI Standard 61 including Annex G, CSA B137.5, and ASTM F1807.

Accessories

- ___ **QCLP3X** 1/2" QuickClamp® Crimp Ring
- ___ **QCR3X** 1/2" Copper Crimp Ring
- ___ **QSOET3X** 1/2" Stainless Steel Crimp Ring

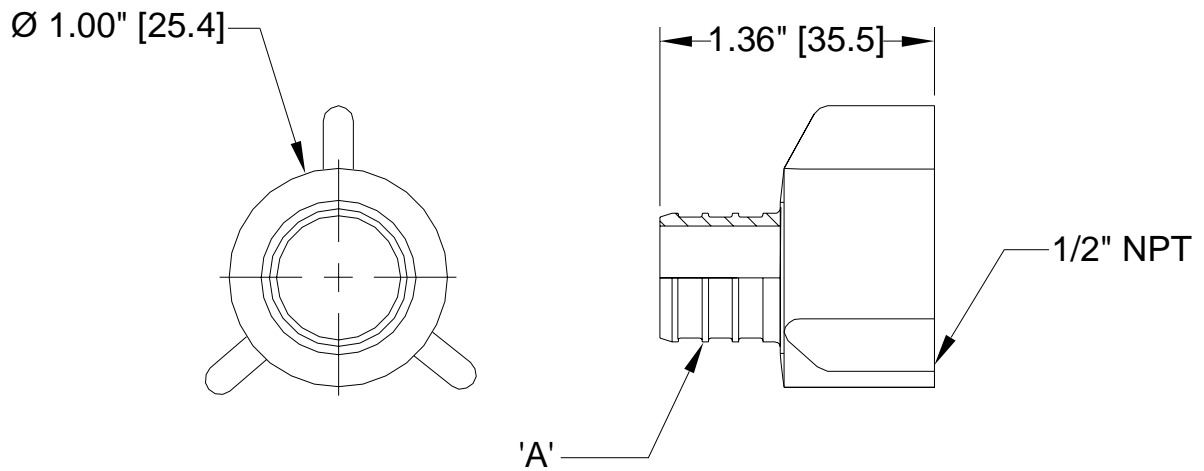
Rev. A	Date: 2/22/10	C.N. No. 110743
Dwg. No. 84405		Prod. No. QQTV477GX



Zurn PEX® XL-Low Lead Brass Barb x Female Thread Swivel Adapter - QQSFC__GXP Specification Sheet

Tag _____

Dimensional Data: Inches and [mm] are subject to manufacturing tolerances and change without notice.



Part Number	Description	'A'
QQSFC23GXP	3/8" Barb x 1/2" Female Swivel Adapter	3/8" Barb
QQSFC33GXP	1/2" Barb x 1/2" Female Swivel Adapter	1/2" Barb

Engineering Specification: Zurn PEX® XL-Low Lead Brass Barb x Female Thread Swivel Adapter. The QQSFC__GXP adapter is used to transition from PEX to male pipe threads, such as on QickPort® manifold outlets. Manufactured from EcoBrass®, C69300. These fittings, as a system with Zurn PEX® tube, are pressure rated at 160 PSI at 73°F, 100 PSI at 180°F, and 80 PSI at 200°F. These fittings are listed by NSF as complying with the following standards: NSF/ANSI Standard 14, NSF/ANSI Standard 61 including Annex G, ASTM F877, CSA B137.5, and ASTM F1807.

Accessories

- ___ **QCLP2X** 3/8" QickClamp® Crimp Ring
- ___ **QCLP3X** 1/2" QickClamp® Crimp Ring
- ___ **QCR2X** 3/8" Copper Crimp Ring
- ___ **QCR3X** 1/2" Copper Crimp Ring
- ___ **QSOET2X** 3/8" Stainless Steel Crimp Ring
- ___ **QSOET3X** 1/2" Stainless Steel Crimp Ring

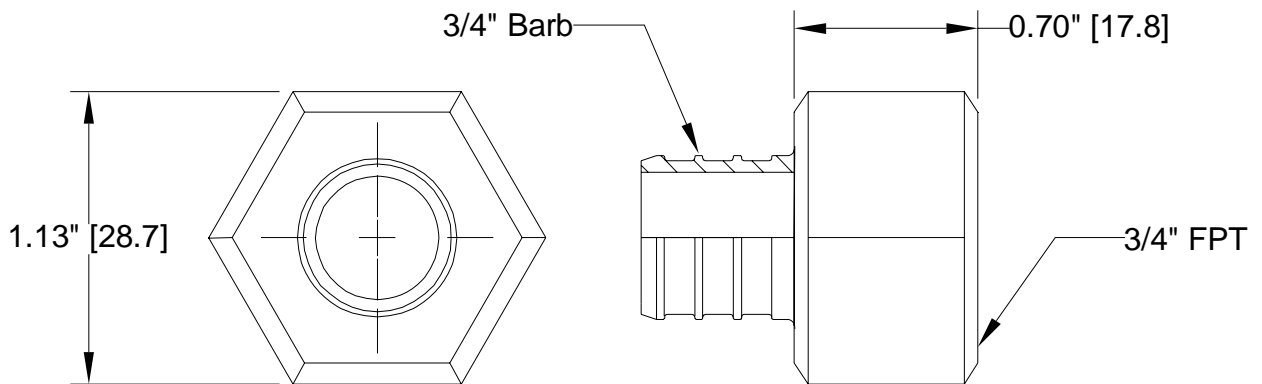
Rev.	Date: 2/22/10	C.N. No. 110728
Dwg. No. 84482	Prod. No. QQSFC__GXP	



Zurn PEX® XL-Low Lead Brass Barb x Female Swivel Adapter - QQSFC44GX Specification Sheet

Tag _____

Dimensional Data: Inches and [mm] are subject to manufacturing tolerances and change without notice.



Engineering Specification: Zurn PEX® XL-Low Lead Brass Barb x Female Thread Swivel Adapter. The QQSFC44GX adapter is used to transition from PEX to male pipe threads. Manufactured from EcoBrass®, C69300. These fittings, as a system with Zurn PEX® tube, are pressure rated at 160 PSI at 73°F, 100 PSI at 180°F, and 80 PSI at 200°F. These fittings are listed by NSF as complying with the following standards: NSF/ANSI Standard 14, NSF/ANSI Standard 61 including Annex G, ASTM F877, CSA B137.5, and ASTM F1807.

Accessories

___ QCLP4X	3/4" QuickClamp® Crimp Ring
___ QCR4X	3/4" Copper Crimp Ring
___ QSOET4X	3/4" Stainless Steel Crimp Ring

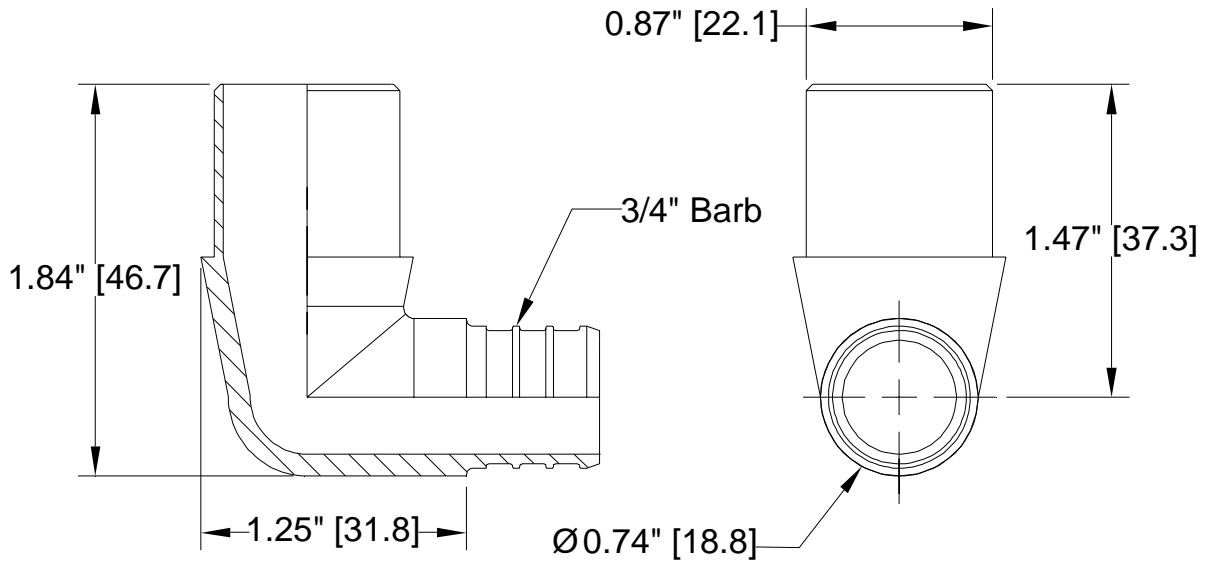
Rev. A	Date: 2/22/10	C.N. No. 110738
Dwg. No. 83978		Prod. No. QQSFC44GX



Zurn PEX® XL-Low Lead Brass Barb x Male Sweat Elbow - QQE675GX Specification Sheet

Tag _____

Dimensional Data: Inches and [mm] are subject to manufacturing tolerances and change without notice.



Engineering Specification: Zurn PEX® XL-Low Lead Brass Barb x Male Sweat Elbow Adapter. The QQE675GX male elbow is made to fit inside a 3/4" wrought copper fitting and adapt to PEX tubing. Manufactured from EcoBrass®, C69300. These fittings, as a system with Zurn PEX® tube, are pressure rated at 160 PSI at 73°F, 100 PSI at 180°F, and 80 PSI at 200°F. These fittings are listed by NSF as complying with the following standards: NSF/ANSI Standard 14, NSF/ANSI Standard 61 including Annex G, ASTM F877, CSA B137.5, and ASTM F1807.

Accessories

- ___ **QCLP4X** 3/4" QuickClamp® Crimp Ring
- ___ **QCR4X** 3/4" Copper Crimp Ring
- ___ **QSOET4X** 3/4" Stainless Steel Crimp Ring

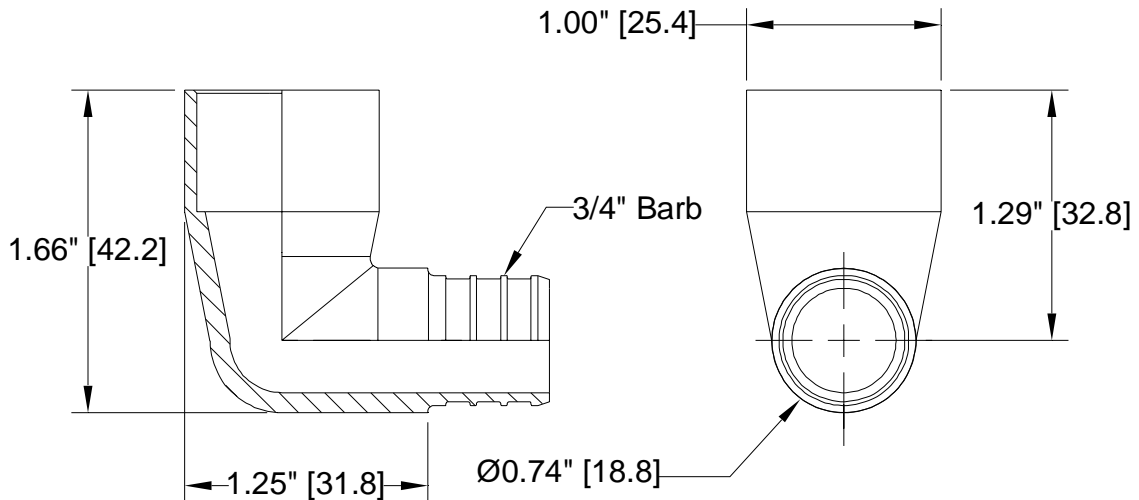
Rev. A	Date: 2/22/10	C.N. No. 110741
Dwg. No. 83882		Prod. No. QQE675GX



Zurn PEX® XL-Low Lead Brass Barb x Female Sweat Elbow - QQE775GX Specification Sheet

Tag _____

Dimensional Data: Inches and [mm] are subject to manufacturing tolerances and change without notice.



Engineering Specification: Zurn PEX® XL-Low Lead Brass Barb x Female Sweat Elbow Adapter. The QQE775GX female elbow solders directly to 3/4" copper tubing and adapts to PEX tubing. Manufactured from EcoBrass®, C69300. These fittings, as a system with Zurn PEX® tube, are pressure rated at 160 PSI at 73°F, 100 PSI at 180°F, and 80 PSI at 200°F. These fittings are listed by NSF as complying with the following standards: NSF/ANSI Standard 14, NSF/ANSI Standard 61 including Annex G, ASTM F877, CSA B137.5, and ASTM F1807.

Accessories

- **QCLP4X** 3/4" QuickClamp® Crimp Ring
- **QCR4X** 3/4" Copper Crimp Ring
- **QS0ET4X** 3/4" Stainless Steel Crimp Ring

Rev. A	Date: 2/22/10	C.N. No.110740
Dwg. No. 83881		Prod. No.QQE775GX



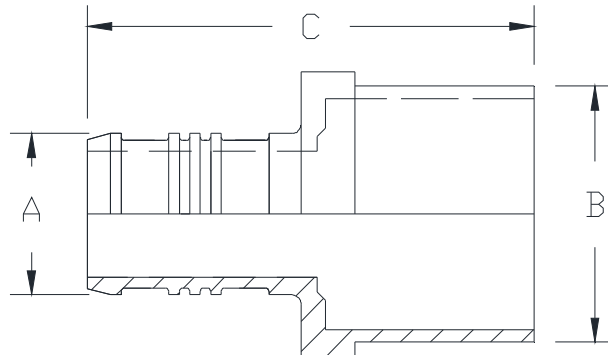
QQ_GX

XL BRASS PEX CRIMP x MALE SWEAT ADAPTER

SPECIFICATION SHEET

TAG _____

Dimensional Data (inches and [mm]) are Subject to Manufacturing Tolerances and Change Without Notice



NOTE: Barb geometry will vary depending upon barb size.

Part Number	XL Brass PEX Crimp x Male Sweat Adapter Size	Dimensions in In [mm]			
		A	B	B - Nominal Copper	C
QQ650GX	1/2" PEX Crimp x 1/2" Male Sweat	1/2" PEX Barb	0.62 [16]	1/2" CU MSWT	1.19 [30]
QQ675GX	3/4" PEX Crimp x 3/4" Male Sweat	3/4" PEX Barb	0.87 [22]	3/4" CU MSWT	1.45 [37]
QQ700GX	1" PEX Crimp x 1" Male Sweat	1" PEX Barb	1.12 [28]	1" CU MSWT	1.91 [49]
QQ712GX	1-1/4" PEX Crimp x 1-1/4" Male Sweat	1-1/4" PEX Barb	1.37 [35]	1-1/4" CU MSWT	2.15 [55]
QQ900GX	1-1/2" PEX Crimp x 1-1/2" Male Sweat	1-1/2" PEX Barb	1.62 [41]	1-1/2" CU MSWT	2.34 [59]
QQ975GX	2" PEX Crimp x 2" Male Sweat	2" PEX Barb	2.12 [54]	2" CU MSWT	3.11 [79]

Engineering Specification: Zurn PEX® XL-Low Lead Brass PEX Crimp x Male Sweat Adapter

The QQ_GX solders directly into a copper fitting. Not for use in reverse osmosis systems or in areas with known localized aggressive water chemistries. Manufactured from EcoBrass®,C69300. These fittings, as a system with Zurn PEX® tubing are pressure rated at 160 PSI at 73°F, 100 PSI at 180°F, and 80 PSI at 200°F. These fittings are listed by NSF as complying with the following standards: NSF/ANSI Standard 14, NSF/ANSI Standard 61 including Annex G, ASTM F877, CSAB137.5 and ASTM F1807.

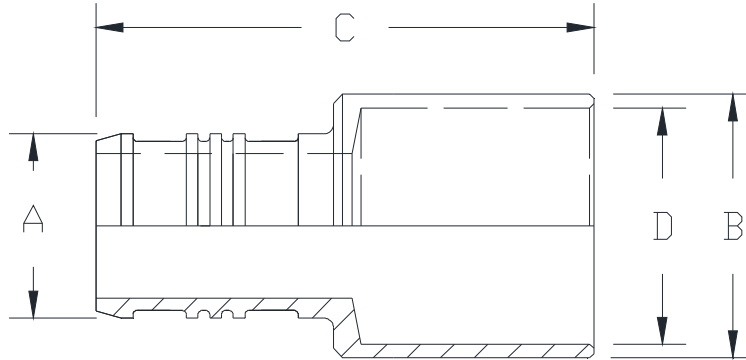
Accessories

- ___ QCR3X 1/2" Copper Crimp Ring
- ___ QCR4X 3/4" Copper Crimp Ring
- ___ QCR5X 1" Copper Crimp Ring
- ___ QCR6X 1-1/4" Copper Crimp Ring
- ___ QCR7X 1-1/2" Copper Crimp Ring
- ___ QCR8X 2" Copper Crimp Ring
- ___ QCLP3X 1/2" QuickClamp Stainless Steel Crimp Ring
- ___ QCLP4X 3/4" QuickClamp Stainless Steel Crimp Ring
- ___ QCR3XPC 1/2" Copper Crimp Ring w/ Positioning Cap
- ___ QCR4XPC 3/4" Copper Crimp Ring w/ Positioning Cap
- ___ QCR5XPC 1" Copper Crimp Ring w/ Positioning Cap
- ___ QCR6XPC 1-1/4" Copper Crimp Ring w/ Positioning Cap
- ___ QCR7XPC 1-1/2" Copper Crimp Ring w/ Positioning Cap
- ___ QCR8XPC 2" Copper Crimp Ring w/ Positioning Cap
- ___ QSOETPG3X 1/2" Stainless Steel Crimp Ring - Precrimped
- ___ QSOETPG4X 3/4" Stainless Steel Crimp Ring - Precrimped
- ___ QSOETPG5X 1" Stainless Steel Crimp Ring - Precrimped

**QQ_GX****XL BRASS PEX CRIMP x FEMALE SWEAT ADAPTER****SPECIFICATION SHEET**

TAG _____

Dimensional Data (inches and [mm]) are Subject to Manufacturing Tolerances and Change Without Notice



NOTE: Barb geometry will vary depending upon barb size.

Part Number	XL Brass PEX Crimp x Female Sweat Adapter Size	Dimensions in In [mm]			
		A	B	C	D - Nominal Copper
QQ750GX	1/2" PEX Crimp x 1/2" Female Sweat	1/2" PEX Barb	0.70 [18]	1.19 [30]	1/2" CU FSWT
QQ770GX	1/2" PEX Crimp x 3/4" Female Sweat	1/2" PEX Barb	0.96 [24]	1.43 [36]	3/4" CU FSWT
QQ775GX	3/4" PEX Crimp x 3/4" Female Sweat	3/4" PEX Barb	0.96 [24]	1.44 [37]	3/4" CU FSWT
QQ800GX	1" PEX Crimp x 1" Female Sweat	1" PEX Barb	1.24 [31]	1.89 [48]	1" CU FSWT
QQ812GX	1-1/4" PEX Crimp x 1-1/4" Female Sweat	1-1/4" PEX Barb	1.51 [38]	2.02 [51]	1-1/4" CU FSWT
QQ950GX	1-1/2" PEX Crimp x 1-1/2" Female Sweat	1-1/2" PEX Barb	1.78 [45]	2.39 [61]	1-1/2" CU FSWT
QQ1050GX	2" PEX Crimp x 2" Female Sweat	2" PEX Barb	2.37 [60]	2.97 [75]	2" CU FSWT

Engineering Specification: Zurn PEX® XL-Low Lead Brass PEX Crimp x Female Sweat Adapter

The QQ_GX solders directly onto copper tubing. Not for use in reverse osmosis systems or in areas with known localized aggressive water chemistries. Manufactured from EcoBrass®, C69300. These fittings, as a system with Zurn PEX® tubing are pressure rated at 160 PSI at 73°F, 100 PSI at 180°F, and 80 PSI at 200°F. These fittings are listed by NSF as complying with the following standards: NSF/ANSI Standard 14, NSF/ANSI Standard 61 including Annex G, ASTM F877, CSAB137.5 and ASTM F1807.

Accessories

___	QCR3X	1/2" Copper Crimp Ring
___	QCR4X	3/4" Copper Crimp Ring
___	QCR5X	1" Copper Crimp Ring
___	QCR6X	1-1/4" Copper Crimp Ring
___	QCR7X	1-1/2" Copper Crimp Ring
___	QCR8X	2" Copper Crimp Ring
___	QCLP3X	1/2" QuickClamp Stainless Steel Crimp Ring
___	QCLP4X	3/4" QuickClamp Stainless Steel Crimp Ring
___	QCR3XPC	1/2" Copper Crimp Ring w/ Positioning Cap
___	QCR4XPC	3/4" Copper Crimp Ring w/ Positioning Cap
___	QCR5XPC	1" Copper Crimp Ring w/ Positioning Cap
___	QCR6XPC	1-1/4" Copper Crimp Ring w/ Positioning Cap
___	QCR7XPC	1-1/2" Copper Crimp Ring w/ Positioning Cap
___	QCR8XPC	2" Copper Crimp Ring w/ Positioning Cap
___	QSOETPG3X	1/2" Stainless Steel Crimp Ring - Precrimped
___	QSOETPG4X	3/4" Stainless Steel Crimp Ring - Precrimped
___	QSOETPG5X	1" Stainless Steel Crimp Ring - Precrimped

Zurn Industries, LLC | Zurn PEX, Inc.
116 Maple Street, Commerce, TX U.S.A. 75429 · Ph. 800-872-7277, Fax 800-209-2148

Zurn Industries, LLC | Specification Drainage Operation
1801 Pittsburgh Avenue, Erie, PA U.S.A. 16502 · Ph. 855-663-9876, Fax 814-454-7929

www.zurn.com

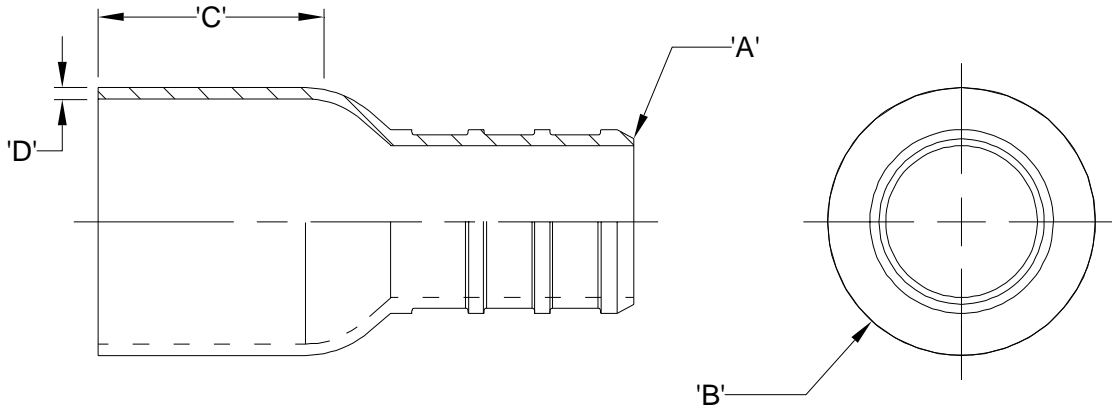
Rev. -
Date: 06/12/18
C.N. No. 140153
Prod. | Dwg. No. QQ_GX(FEMALE)



Copper Female Sweat X PEX Adapter QQ__CX Specification Sheet

Tag _____

Dimensional Data: Inches and [mm] are subject to manufacturing tolerances and change without notice.



Part Number	Description	'A'	'B'	'C'	'D'
QQ750CX	1/2" Female Sweat x 1/2" Barb	1/2" Barb	0.69" [17.5]	0.50" [12.7]	0.03" [0.8]
QQ770CX	3/4" Female Sweat x 1/2" Barb	1/2" Barb	0.95" [24.0]	0.75" [19.1]	0.03" [0.8]
QQ775CX	3/4" Female Sweat x 3/4" Barb	3/4" Barb	0.95" [24.0]	0.75" [19.1]	0.03" [0.8]
QQ800CX	1" Female Sweat x 1" Barb	1" Barb	1.21" [30.7]	0.91" [23.1]	0.04" [1.0]

Engineering Specification: Zurn PEX[®] Copper Female Sweat x Zurn PEX[®] Adapter. The QQ__X adapter solders directly to copper tubing. These fittings, as a system with Zurn PEX[®] tube, are pressure rated at 160 PSI at 73°F, 100 PSI at 180°F, and 80 PSI at 200°F. These fittings are listed as complying with the following standards: NSF/ANSI Standard 61, CSA B137.5, and ASTM F1807.

Accessories

- ___ **QCLP3X** 1/2" QuickClamp[®] Crimp Ring
- ___ **QCLP4X** 3/4" QuickClamp[®] Crimp Ring
- ___ **QCLP5X** 1" QuickClamp[®] Crimp Ring
- ___ **QCR3X** 1/2" Copper Crimp Ring
- ___ **QCR4X** 3/4" Copper Crimp Ring
- ___ **QCR5X** 1" Copper Crimp Ring
- ___ **QSOET3X** 1/2" Stainless Steel Crimp Ring
- ___ **QSOET4X** 3/4" Stainless Steel Crimp Ring
- ___ **QSOET5X** 1" Stainless Steel Crimp Ring

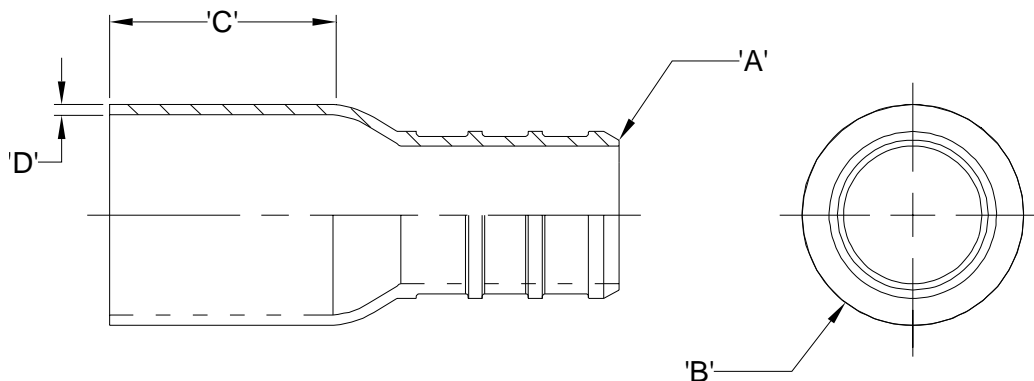
Rev.	Date: 11/23/2009	C.N. No.110449
Dwg. No. 84398		Prod. No. QQ__CX



Copper Male Sweat X PEX Adapter QQ__CX Specification Sheet

Tag _____

Dimensional Data: Inches and [mm] are subject to manufacturing tolerances and change without notice.



Part Number	Description	'A'	'B'	'C'	'D'
QQ650CX	1/2" Male Sweat x 1/2" Barb	1/2" Barb	0.62" [15.8]	0.56" [14.2]	0.03" [0.7]
QQ675CX	3/4" Male Sweat x 3/4" Barb	3/4" Barb	0.87" [22.2]	0.81" [20.6]	0.03" [0.7]
QQ700CX	1" Male Sweat x 1" Barb	1" Barb	1.13" [28.6]	0.97" [24.6]	0.04" [1.0]

Engineering Specification: Zurn PEX® Copper Male Sweat x Zurn PEX® adapters. The QQ__CX adapter is made to fit inside a wrought copper fitting. These fittings, as a system with Zurn PEX® tube, are pressure rated at 160 PSI at 73°F, 100 PSI at 180°F, and 80 PSI at 200°F. These fittings are listed as complying with the following standards: NSF/ANSI Standard 61, CSA B137.5, and ASTM F1807.

Accessories

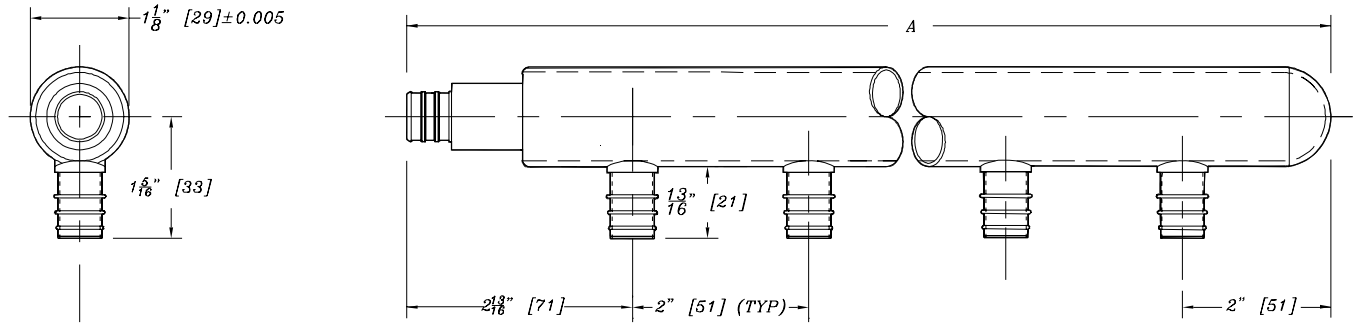
- ___ QCLP3X 1/2" QuickClamp® Crimp Ring
- ___ QCLP4X 3/4" QuickClamp® Crimp Ring
- ___ QCLP5X 1" QuickClamp® Crimp Ring
- ___ QCR3X 1/2" Copper Crimp Ring
- ___ QCR4X 3/4" Copper Crimp Ring
- ___ QCR5X 1" Copper Crimp Ring
- ___ QS0ET3X 1/2" Stainless Steel Crimp Ring
- ___ QS0ET4X 3/4" Stainless Steel Crimp Ring
- ___ QS0ET5X 1" Stainless Steel Crimp Ring

Rev.	Date: 11/23/2009	C.N. No.110448
Dwg. No. 84397		Prod. No. QQ__CX



Copper Manifold with 3/4" Inlet, Spun Closed End and 1/2" Outlets – QCM43- GX Specification Sheet Tag _____

Dimensional Data: Inches and [mm] are subject to manufacturing tolerances and change without notice.



Part Number	Description	'A'
QCM43-4GX	3/4" PEX Crimp Inlet x Spun Closed w/ (4) 1/2" PEX Crimp Outlets	10-3/4" [273]
QCM43-6GX	3/4" PEX Crimp Inlet x Spun Closed w/ (6) 1/2" PEX Crimp Outlets	14-3/4" [375]
QCM43-8GX	3/4" PEX Crimp Inlet x Spun Closed w/ (8) 1/2" PEX Crimp Outlets	18-3/4" [476]
QCM43-12GX	3/4" PEX Crimp Inlet x Spun Closed w/ (12) 1/2" PEX Crimp Outlets	26-3/4" [679]

Engineering Specification: Zurn PEX® 1" Type L Copper Manifold comprised with 3/4" Zurn PEX XL brass crimp inlet, spun closed end and 1/2" Zurn PEX XL brass crimp outlets. The 1/2" Zurn PEX XI brass PEX outlets are brazed to the header, and manufactured from EcoBrass®, C69300. These fittings, as a system with Zurn PEX® tube, are pressure rated at 160 PSI at 73°F, 100 PSI at 180°F, and 80 PSI at 200°F. These fittings are listed by NSF as complying with the following standards: NSF/ANSI Standard 14, NSF/ANSI Standard 61 including Annex G, ASTM F877, CSA B137.5, and ASTM F1807.

Accessories

- ___ **QCLP3X** 1/2" QuickClamp® Crimp Ring
- ___ **QCLP4X** 3/4" QuickClamp® Crimp Ring
- ___ **QCR3X** 1/2" Copper Crimp Ring
- ___ **QCR4X** 3/4" Copper Crimp Ring
- ___ **QSOET3X** 1/2" Stainless Steel Crimp Ring
- ___ **QSOET4X** 3/4" Stainless Steel Crimp Ring

Rev. C	Date: 8/13/2010	C.N. No. XXXXX
Dwg. No. 66777	Prod. No. QCM43- GX	

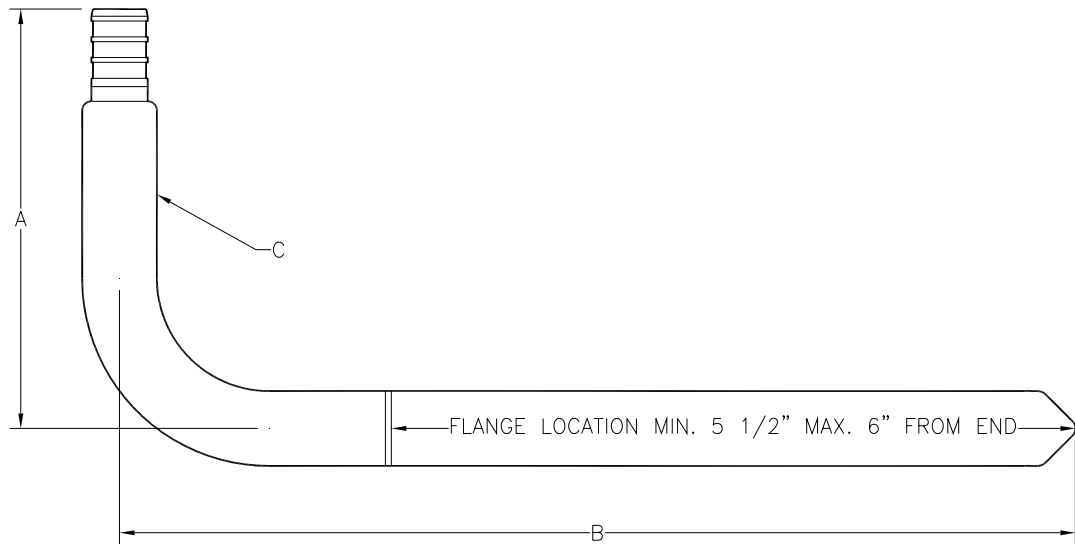


Copper Stubout Elbow QSTUBL_

Specification Sheet

Tag _____

Dimensional Data: Inches and [mm] are subject to manufacturing tolerances and change without notice.



Part Number	Description	Barb Size	'A' in [mm]	'B' in [mm]	'C' in [mm]
QSTUBLXX	8" Copper Stubout Elbow	1/2"	3-1/2 [89]	8 [203]	1/2"
QSTUBLXXF	8" Copper Stubout Elbow with Nailing Flange	1/2"	3-1/2 [89]	8 [203]	1/2"
QSTUBL6XX2	6" Copper Stubout Elbow	3/8"	3-1/2 [89]	6 [152]	3/8"
QSTUBL6XX	6" Copper Stubout Elbow	1/2"	3-1/2 [89]	6 [152]	1/2"
QSTUBLXX4	8" Copper Stubout Elbow	3/4"	4-1/2 [114]	8 [203]	3/4"
QSTUBLXX5	8" Copper Stubout Elbow	1"	6 [152]	8 [203]	1"

Engineering Specification: ZurnPEX™ 1/2" Copper Stubout Elbow. The QSTUBL elbow is used in conjunction with PEX tubing. End spun closed allows for system testing before valves or other fittings are installed. Meets NSF® and ASTM requirements.

Accessories

___ QCLP2X	3/8" QuickClamp Crimp Rings
___ QCLP3X	1/2" QuickClamp Crimp Ring
___ QCLP4X	3/4" QuickClamp Crimp Rings
___ QCLP5X	1" QuickClamp Crimp Ring
___ QCR2X	3/8" Copper Crimp Ring
___ QCR3X	1/2" Copper Crimp Ring
___ QCR4X	3/4" Copper Crimp Ring
___ QCR5X	1" Copper Crimp Ringl

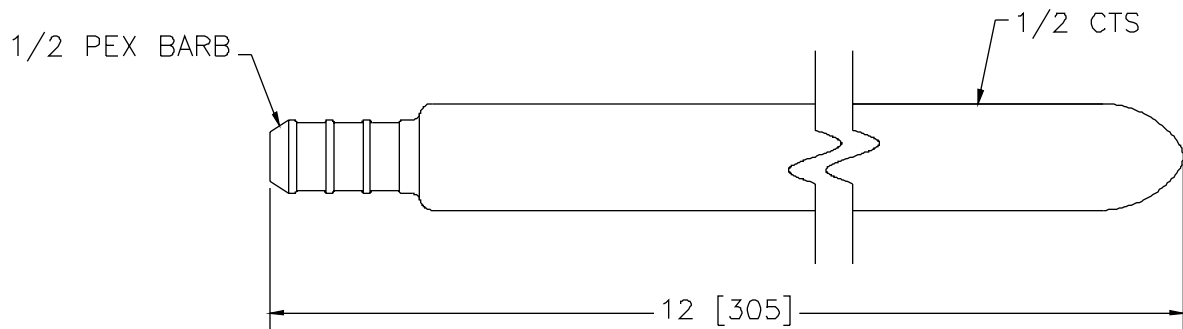
Rev. A	Date: 06/20/08	C.N. No. 98666
Dwg. No. 82627		Prod. No. QSTUBL



12" Straight Copper Stub Out – QSTUB12XX Specification Sheet

Tag _____

Dimensional Data: Inches and [mm] are subject to manufacturing tolerances and change without notice.



Engineering Specification: Zurn® 12" Straight Copper Stub Out. 1/2" PEX Barb x Spun Closed. 1/2" CTS.

Accessories

___ **QCR3X**

1/2" Copper Crimp Ring

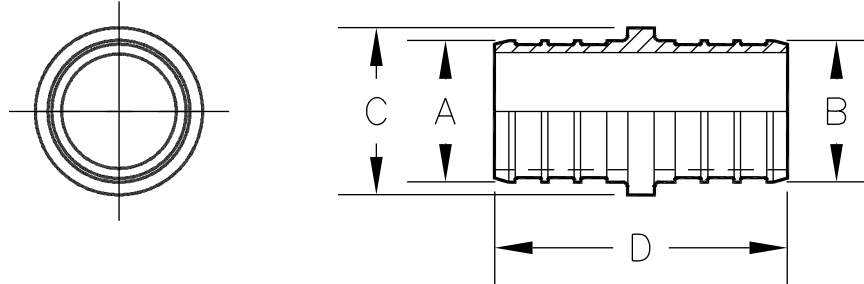
Rev.	Date: 03/10/05	C.N. No. 93108
Dwg. No. 82248		Prod. No. QSTUB12XX



QickSert CR™ – QQPC_X Specification Sheet

Tag _____

Dimensional Data: Inches and [mm] are subject to manufacturing tolerances and change without notice.



Part Number	Description	'A' In. [mm]	'B' In. [mm]	'C' In. [mm]	'D' In. [mm]
QQPC33X	1/2" Barb x 1/2" Barb Coupling	0.473 [12.0]	0.473 [12.0]	0.68 [17.3]	1.50 [38.1]
QQPC44X	3/4" Barb x 3/4" Barb Coupling	0.668 [17.0]	0.668 [17.0]	0.93 [23.6]	1.50 [38.1]
QQPC34X	1/2" Barb x 3/4" Barb Coupling	0.473 [12.0]	0.668 [17.0]	0.93 [23.6]	1.50 [38.1]
QQPC45X	3/4" Barb x 1" Barb Coupling	0.668 [17.0]	0.856 [21.7]	0.95 [24.1]	1.83 [46.5]
QQPC55X	1" Barb x 1" Barb Coupling	0.856 [21.7]	0.856 [21.7]	0.95 [24.1]	1.83 [46.5]

Engineering Specification: Zurn PEX™ QickSert CR™ coupling. The QQPC__X coupling is used to connect PEX tubing to PEX tubing. Molded from Acudel®. These fittings, as a system with Zurn PEX tube, are pressure rated at 160 PSI at 73°F, 100 PSI at 180°F, and 80 PSI at 200°F. These fittings are listed by NSF as complying with the following standards: NSF/ANSI Standard 14, NSF/ANSI Standard 61, ASTM F877, CSA B137.5, and ASTM F2159.

Accessories

- ___ QCLP3X 1/2" QickClamp Crimp Ring
- ___ QCLP4X 3/4" QickClamp Crimp Ring
- ___ QCLP5X 1" QickClamp Crimp Ring
- ___ QCR3X 1/2" Copper Crimp Ring
- ___ QCR4X 3/4" Copper Crimp Ring
- ___ QCR5X 1" Copper Crimp Ring

Rev. B	Date: 6/26/08	C.N. No. 98686
Dwg. No. 82183		Prod. No. QQPC_X



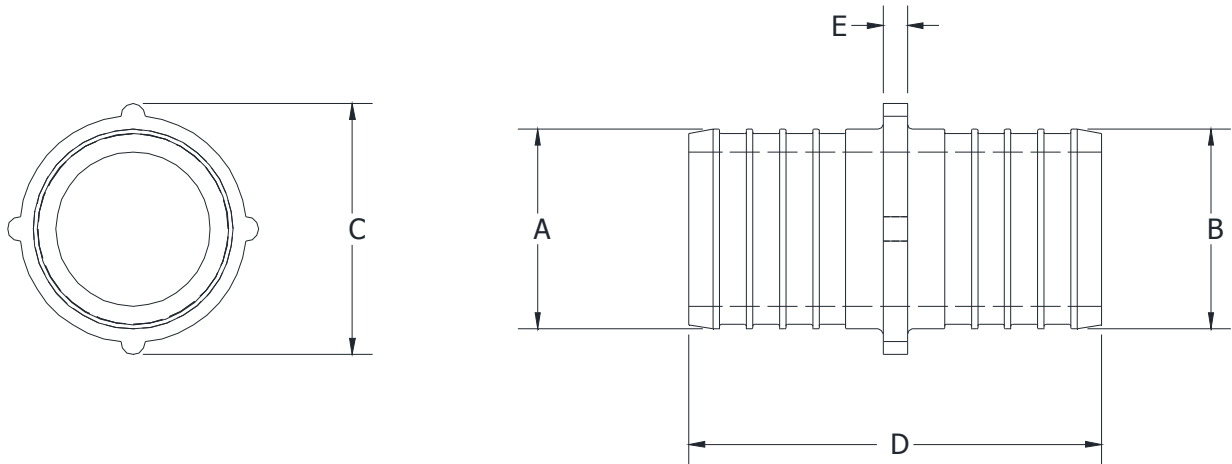
LD QQPC_X

LARGE DIAMETER Qick Sert CR® PEX COUPLING

SPECIFICATION SHEET

TAG _____

Dimensional Data (inches and [mm]) are Subject to Manufacturing Tolerances and Change Without Notice



Part Number	Description	A in [mm]	B in [mm]	C in [mm]	D in [mm]	E in [mm]
QQPC65X	1-1/4 [32] barb x 1 [25] barb coupling	1.045 [26.5]	0.856 [21.7]	1.330 [33.8]	2.150 [54.6]	0.100 [2.54]
QQPC66X	1-1/4 [32] barb x 1-1/4 [32] barb coupling	1.045 [26.5]	1.045 [26.5]	1.350 [34.3]	2.500 [63.5]	0.100 [2.54]
QQPC75X	1-1/2 [38] barb x 1 [25] barb coupling	1.233 [31.3]	0.856 [21.7]	1.560 [39.6]	2.200 [55.9]	0.150 [3.8]
QQPC76X	1-1/2 [38] barb x 1-1/4 [32] barb coupling	1.233 [31.3]	1.045 [26.5]	1.560 [39.6]	2.550 [64.8]	0.150 [3.8]
QQPC77X	1-1/2 [38] barb x 1-1/2 [38] barb coupling	1.233 [31.3]	1.233 [31.3]	1.560 [39.6]	2.550 [64.8]	0.150 [3.8]
QQPC87X	2 [51] barb x 1-1/2 [38] barb coupling	1.602 [40.7]	1.233 [31.3]	1.950 [49.5]	2.850 [72.4]	0.150 [3.8]
QQPC88X	2 [51] barb x 2 [51] barb coupling	1.602 [40.7]	1.602 [40.7]	1.950 [49.5]	3.150 [80.0]	0.150 [3.8]

Engineering Specification: Zurn PEX® Qick Sert CR® coupling.

The QQPC_X coupling is used to connect PEX tubing to PEX tubing. Molded from Radel®. These fittings, as a system with Zurn PEX tube are pressure rated at 160 PSI [1103 kPa] at 73.3 °F [22.9 °C], 100 PSI [689 kPa] at 180 °F [82.2 °C], and 80 PSI [552 kPa] at 200 °F [93.3 °C]. These fittings are listed by NSF as complying with the following standards: NSF/ANSI Standard 14, NSF/ANSI Standard 61, NSF/ANSI Standard 372, ASTM F877 and CSA B137.5.

Accessories

___	QCR5X	1 [25] Copper Crimp Ring
___	QCR6X	1-1/4 [32] Copper Crimp Ring
___	QCR7X	1-1/2 [38] Copper Crimp Ring
___	QCR8X	2 [51] Copper Crimp Ring
___	QCR5XPC	1 [25] QickCap® Copper Crimp Ring w/ Positioning Cap
___	QCR6XPC	1-1/4 [32] QickCap® Copper Crimp Ring w/ Positioning Cap
___	QCR7XPC	1-1/2 [38] QickCap® Copper Crimp Ring w/ Positioning Cap
___	QCR8XPC	2 [51] QickCap® Copper Crimp Ring w/ Positioning Cap
___	QGA678CR	Go-Go Gauge for Large Diameter CR Fittings
___	QCRTLDM	Large Diameter Compact Crimp Tool
___	QCRBKIT56-14	14V Battery-Powered Crimp Tool Kit (1 [25], 1-1/4 [32])
___	QBJ6	1-1/4 [32] Crimp Head
___	QBJ7	1-1/2 [38] Crimp Head
___	QBJ8	2 [51] Crimp Head

* Regularly furnished unless otherwise specified.

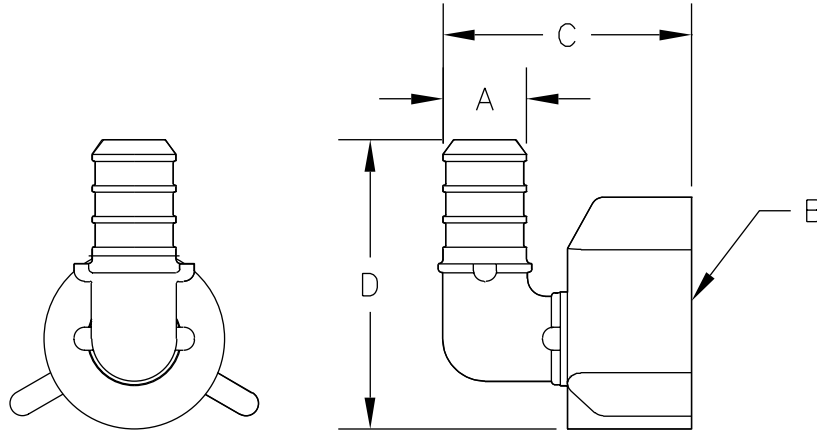


QickSert CR™ Barb x 1/2" Female Thread Swivel Elbow – QQPE_BSX

Specification Sheet

Tag _____

Dimensional Data: Inches and [mm] are subject to manufacturing tolerances and change without notice.



Part Number	Description	'A' In. [mm]	'B' In. [mm]	'C' In. [mm]	'D' In. [mm]
QQPE33BSX	1/2" Barb x 1/2" Female Swivel Elbow Adapter	0.473 [12.0]	1/2" - 14	1.41 [35.8]	1.87 [47.5]
QQPE44BSX	3/4" Barb x 3/4" Female Swivel Elbow Adapter	0.668 [17.0]	3/4" - 14	1.57 [39.9]	2.13 [54.1]

Engineering Specification: Zurn PEX™ QickSert CR™ Barb x Female Thread Swivel Elbow. The QQPE__BSX adapter is used to transition from PEX to male pipe threads. Molded from Accudel®. These fittings, as a system with Zurn PEX tube, are pressure rated at 160 PSI at 73°F, 100 PSI at 180°F, and 80 PSI at 200°F. These fittings are listed by NSF as complying with the following standards: NSF/ANSI Standard 14, NSF/ANSI Standard 61, ASTM F877, CSA B137.5, and ASTM F2159.

Accessories

- ___ QCLP3X 1/2" QickClamp Crimp Ring
- ___ QCLP4X 3/4" QickClamp Crimp Ring
- ___ QCR3X 1/2" Copper Crimp Ring
- ___ QCR4X 3/4" Copper Crimp Ring

Rev. A	Date: 6/26/08	C.N. No. 98692
Dwg. No. 82189		Prod. No. QQPE_BSX

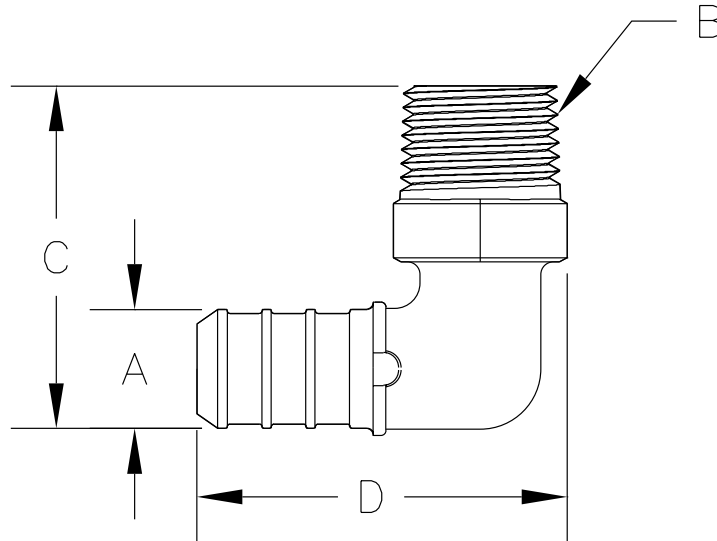


QickSert CR™ Barb x MPT Elbow – QQPE_BT X

Specification Sheet

Tag _____

Dimensional Data: Inches and [mm] are subject to manufacturing tolerances and change without notice.



Part Number	Description	'A' In. [mm]	'B' In. [mm]	'C' In. [mm]	'D' In. [mm]
QQPE32BTX	1/2" Barb x 3/8" MPT Elbow	0.473 [12.0]	3/8" - 18 NPT	1.13 [28.7]	1.13 [28.7]
QQPE33BTX	1/2" Barb x 1/2" MPT Elbow	0.473 [12.0]	1/2" - 14 NPT	1.25 [31.8]	1.25 [31.8]
QQPE44BTX	3/4" Barb x 3/4" MPT Elbow	0.668 [17.0]	3/4" - 14 NPT	1.23 [31.2]	1.42 [36.1]

Engineering Specification: Zurn PEX™ QickSert CR™ Barb x Male Thread Elbow. The QQPE__BTX elbow is used to transition from female pipe thread to PEX tubing. Molded from Accudel®. These fittings, as a system with Zurn PEX tube, are pressure rated at 160 PSI at 73°F, 100 PSI at 180°F, and 80 PSI at 200°F. These fittings are listed by NSF as complying with the following standards: NSF/ANSI Standard 14, NSF/ANSI Standard 61, ASTM F877, CSA B137.5, and ASTM F2159.

Accessories

- ___ QCLP2X 3/8" QickClamp Crimp Ring
- ___ QCLP3X 1/2" QickClamp Crimp Ring
- ___ QCLP4X 3/4" QickClamp Crimp Ring
- ___ QCR2X 3/8" Copper Crimp Ring
- ___ QCR3X 1/2" Copper Crimp Ring
- ___ QCR4X 3/4" Copper Crimp Ring

Rev. A	Date: 6/26/08	C.N. No. 98688
Dwg. No. 82185		Prod. No. QQPE_BT X

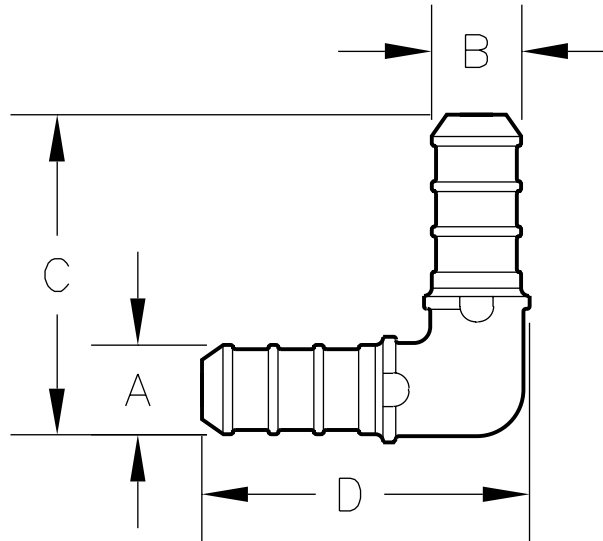


QickSert CR™ Barb x Barb Elbow – QQPE_X

Specification Sheet

Tag _____

Dimensional Data: Inches and [mm] are subject to manufacturing tolerances and change without notice.



Part Number	Description	'A' In. [mm]	'B' In. [mm]	'C' In. [mm]	'D' In. [mm]
QQPE33X	1/2" Barb x 1/2" Barb Elbow	0.473 [12.0]	0.473 [12.0]	1.13 [28.7]	1.13 [28.7]
QQPE43X	3/4" Barb x 1/2" Barb Elbow	0.668 [17.0]	0.473 [12.0]	1.20 [30.5]	1.20 [30.5]
QQPE44X	3/4" Barb x 3/4" Barb Elbow	0.668 [17.0]	0.668 [17.0]	1.20 [30.5]	1.20 [30.5]
QQPE55X	1" Barb x 1" Barb Elbow	0.856 [21.7]	0.856 [21.7]	2.00 [50.8]	2.00 [50.8]

Engineering Specification: Zurn PEX™ QickSert CR™ Barb x Barb Elbow. The QQPE_X elbow is used to make sharp 90° bends. Molded from Accudel®. These fittings, as a system with Zurn PEX tube, are pressure rated at 160 PSI at 73°F, 100 PSI at 180°F, and 80 PSI at 200°F. These fittings are listed by NSF as complying with the following standards: NSF/ANSI Standard 14, NSF/ANSI Standard 61, ASTM F877, CSA B137.5, and ASTM F2159.

Accessories

- ___ QCLP3X 1/2" QickClamp Crimp Ring
- ___ QCLP4X 3/4" QickClamp Crimp Ring
- ___ QCLP5X 1" QickClamp Crimp Ring
- ___ QCR3X 1/2" Copper Crimp Ring
- ___ QCR4X 3/4" Copper Crimp Ring
- ___ QCR5X 1" Copper Crimp Ring

Rev. B	Date: 6/26/08	C.N. No. 98689
Dwg. No. 82186		Prod. No. QQPE_X



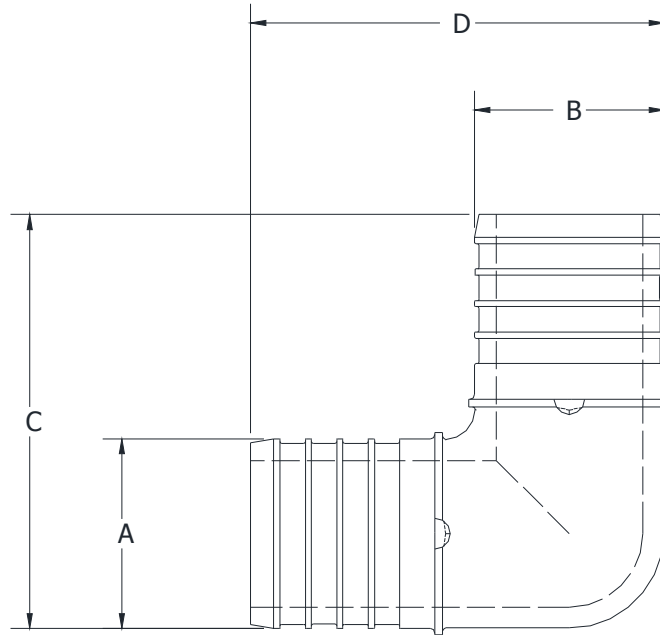
LD QQPE_X

LARGE DIAMETER Qick Sert CR® BARB X BARB EL-BOW

SPECIFICATION SHEET

TAG _____

Dimensional Data (inches and [mm]) are Subject to Manufacturing Tolerances and Change Without Notice



Part Number	Description	A in [mm]	B in [mm]	C in [mm]	D in [mm]
QQPE66X	1-1/4 [32] barb x 1-1/4 [32] barb elbow	1.045 [26.5]	1.045 [26.5]	2.473 [62.8]	2.473 [62.8]
QQPE77X	1-1/2 [32] barb x 1-1/2 [38] barb elbow	1.233 [31.3]	1.233 [31.3]	2.697 [68.5]	2.697 [68.5]
QQPE88X	2 [51] barb x 2 [51] barb elbow	1.602 [40.7]	1.602 [40.7]	3.401 [86.4]	3.401 [86.4]

Engineering Specification: Zurn PEX® Qick Sert Cr® elbow.

The QQPE_X elbow is used to make sharp 90° bends. Molded from Radel®. These fittings, as a system with Zurn PEX tube are pressure rated at 160 PSI [1103 kPa] at 73.3°F [22.9°C], 100 PSI [689 kPa] at 180°F [82.2°C], and 80 PSI [552 kPa] at 200°F [93.3°C]. These fittings are listed by NSF as complying with the following standards: NSF/ANSI Standard 14, NSF/ANSI Standard 61, NSF/ANSI Standard 372, ASTM F877 and CSA B137.5.

Accessories

___	QCR6X	1-1/4 [32] Copper Crimp Ring
___	QCR7X	1-1/2 [38] Copper Crimp Ring
___	QCR8X	2 [51] Copper Crimp Ring
___	QCR6XPC	1-1/4 [32] QickCap® Copper Crimp Ring w/ Positioning Cap
___	QCR7XPC	1-1/2 [38] QickCap® Copper Crimp Ring w/ Positioning Cap
___	QCR8XPC	2 [51] QickCap® Copper Crimp Ring w/ Positioning Cap
___	QGA678CR	Go-Go Gauge for Large Diameter CR Fittings
___	QCRTLDM	Large Diameter Compact Crimp Tool
___	QCRBKIT56-14	14V Battery-Powered Crimp Tool Kit (1 [25], 1-1/4 [32])
___	QBJ6	1-1/4 [32] Crimp Head
___	QBJ7	1-1/2 [38] Crimp Head
___	QBJ8	2 [51] Crimp Head

* Regularly furnished unless otherwise specified.

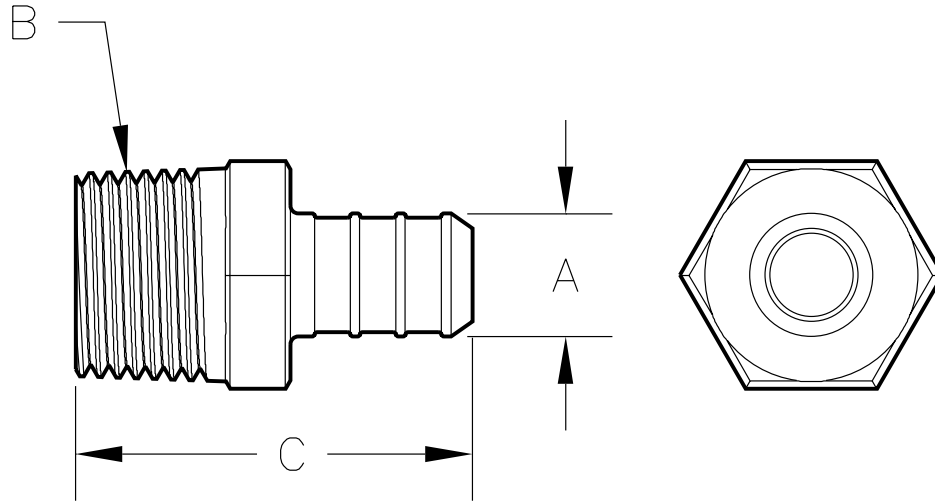


QickSert CR™ Barb x MPT Adapter – QQPMC_X

Specification Sheet

Tag _____

Dimensional Data: Inches and [mm] are subject to manufacturing tolerances and change without notice.



Part Number	Description	'A' In. [mm]	'B' In. [mm]	'C' In. [mm]
QQPMC33X	1/2" Barb x 1/2" MPT Adapter	0.473 [12.0]	1/2" - 14 NPT	1.53 [38.9]
QQPMC34X	1/2" Barb x 3/4" MPT Adapter	0.473 [12.0]	3/4" - 14 NPT	1.64 [41.7]
QQPMC44X	3/4" Barb x 3/4" MPT Adapter	0.668 [17.0]	3/4" - 14 NPT	1.64 [41.7]
QQPMC55X	1" Barb x 1" MPT Adapter	0.856 [21.7]	1" - 14 NPT	2.21 [56.1]

Engineering Specification: Zurn PEX™ QickSert CR™ male adapter. The QQPMC_X adapter is used to transition from female pipe thread to PEX tubing. Molded from Accudel®. These fittings, as a system with Zurn PEX tube, are pressure rated at 160 PSI at 73°F, 100 PSI at 180°F, and 80 PSI at 200°F. These fittings are listed by NSF as complying with the following standards: NSF/ANSI Standard 14, NSF/ANSI Standard 61, ASTM F877, CSA B137.5, and ASTM F2159.

Accessories

- ___ QCLP3X 1/2" QickClamp Crimp Ring
- ___ QCLP4X 3/4" QickClamp Crimp Ring
- ___ QCLP5X 1" QickClamp Crimp Ring
- ___ QCR3X 1/2" Copper Crimp Ring
- ___ QCR4X 3/4" Copper Crimp Ring
- ___ QCR5X 1" Copper Crimp Ring

Rev. A	Date: 6/26/08	C.N. No. 98687
Dwg. No. 82184		Prod. No. QQPMC_X

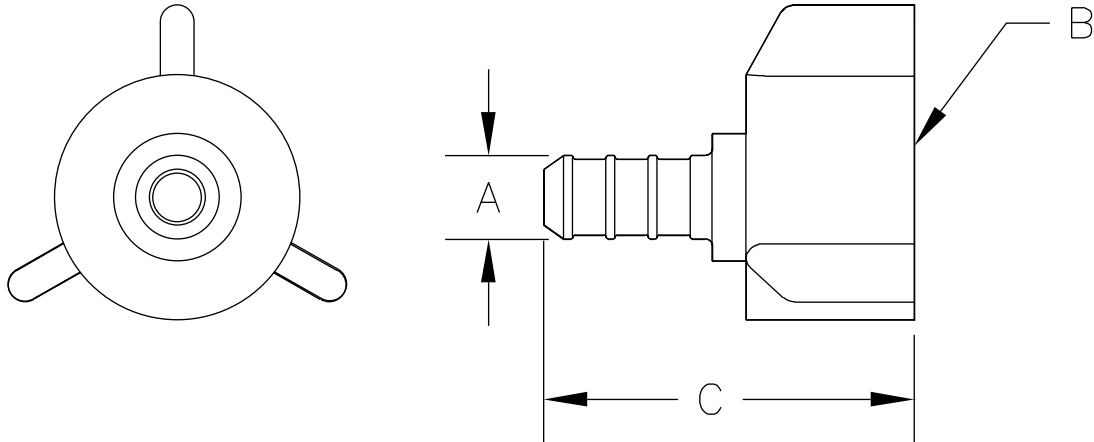


QickSert CR™ Barb x 1/2" Female Thread Swivel Adapter – QQPSFC_X

Specification Sheet

Tag _____

Dimensional Data: Inches and [mm] are subject to manufacturing tolerances and change without notice.



Part Number	Description	'A' In. [mm]	'B' In. [mm]	'C' In. [mm]
QQPSFC23X	3/8" Barb x 1/2" Female NPT Swivel Adapter	0.347 [8.8]	1/2" - 14	1.69 [42.9]
QQPSFC33X	1/2" Barb x 1/2" Female NPT Swivel Adapter	0.473 [12.0]	1/2" - 14	1.69 [42.9]
QQPSFC44X	3/4" Barb x 3/4" Female NPT Swivel Adapter	0.668 [17.0]	3/4" - 14	1.66 [42.1]

Engineering Specification: Zurn PEX™ QickSert CR™. Barb x Female Thread Swivel Adapter. The QQPSFC__X adapter is used to transition from PEX to male pipe threads. Molded from Accudel®. These fittings, as a system with Zurn PEX tube, are pressure rated at 160 PSI at 73°F, 100 PSI at 180°F, and 80 PSI at 200°F. These fittings are listed by NSF as complying with the following standards: NSF/ANSI Standard 14, NSF/ANSI Standard 61, ASTM F877, CSA B137.5, and ASTM F2159.

Accessories

- ___ QCLP2X 3/8" QickClamp Crimp Ring
- ___ QCLP3X 1/2" QickClamp Crimp Ring
- ___ QCLP4X 3/4" QickClamp Crimp Ring
- ___ QCR2X 3/8" Copper Crimp Ring
- ___ QCR3X 1/2" Copper Crimp Ring
- ___ QCR4X 3/4" Copper Crimp Ring

Rev. A	Date: 6/26/08	C.N. No. 98691
Dwg. No. 82188		Prod. No. QQPSFC_X

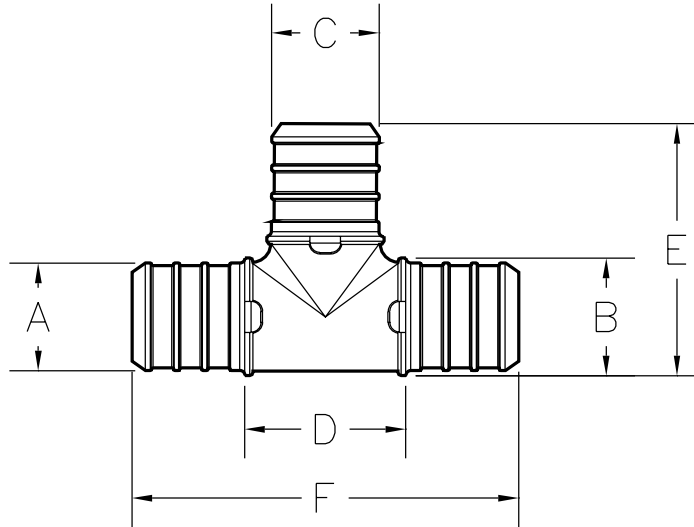


QickSert CR™ Barb x Barb x Barb Tee – QQPT_X

Specification Sheet

Tag _____

Dimensional Data: Inches and [mm] are subject to manufacturing tolerances and change without notice.



Part Number	Description	'A' In. [mm]	'B' In. [mm]	'C' In. [mm]	'D' In. [mm]	'E' In. [mm]	'F' In. [mm]
QQPT333X	1/2" Barb x 1/2" Barb x 1/2" Barb Tee	0.473 [12.0]	0.473 [12.0]	0.473 [12.0]	0.85 [21.6]	1.13 [28.7]	2.25 [57.2]
QQPT334X	1/2" Barb x 1/2" Barb x 3/4" Barb Tee	0.473 [12.0]	0.473 [12.0]	0.668 [17.0]	1.00 [25.4]	1.20 [30.5]	2.40 [61.0]
QQPT433X	3/4" Barb x 1/2" Barb x 1/2" Barb Tee	0.668 [17.0]	0.473 [12.0]	0.473 [12.0]	1.00 [25.4]	1.20 [30.5]	2.40 [61.0]
QQPT434X	3/4" Barb x 1/2" Barb x 3/4" Barb Tee	0.668 [17.0]	0.473 [12.0]	0.473 [12.0]	0.98 [24.9]	1.20 [30.5]	2.40 [61.0]
QQPT443X	3/4" Barb x 3/4" Barb x 1/2" Barb Tee	0.668 [17.0]	0.668 [17.0]	0.473 [12.0]	1.00 [25.4]	1.20 [30.5]	2.40 [61.0]
QQPT444X	3/4" Barb x 3/4" Barb x 3/4" Barb Tee	0.668 [17.0]	0.668 [17.0]	0.668 [17.0]	1.00 [25.4]	1.20 [30.5]	2.40 [61.0]
QQPT553X	1" Barb x 1" Barb x 1/2" Barb Tee	0.856 [21.7]	0.856 [21.7]	0.473 [12.0]	1.00 [25.4]	1.79 [45.5]	2.68 [68.1]
QQPT544X	1" Barb x 3/4" Barb x 3/4" Barb Tee	0.856 [21.7]	0.668 [17.0]	0.668 [17.0]	1.14 [29.0]	1.83 [46.5]	2.73 [69.3]
QQPT554X	1" x Barb 1" Barb x 3/4" Barb Tee	0.856 [21.7]	0.856 [21.7]	0.668 [17.0]	0.98 [24.9]	1.74 [44.2]	2.68 [68.1]
QQPT555X	1" x Barb 1" Barb x 1" Barb Tee	0.856 [21.7]	0.856 [21.7]	0.856 [21.7]	1.36 [35.5]	2.00 [50.8]	3.05 [77.5]

Engineering Specification: Zurn PEX™ QickSert CR™ Barb x Barb x Barb Tee. The QQPT_X tee is used to branch off a main line or change direction. Molded from Accudel®. These fittings, as a system with Zurn PEX tube, are pressure rated at 160 PSI at 73°F, 100 PSI at 180°F, and 80 PSI at 200°F. These fittings are listed by NSF as complying with the following standards: NSF/ANSI Standard 14, NSF/ANSI Standard 61, ASTM F877, CSA B137.5, and ASTM F2159.

Accessories

- ___ QCLP3X 1/2" QickClamp Crimp Ring
- ___ QCLP4X 3/4" QickClamp Crimp Ring
- ___ QCLP5X 1" QickClamp Crimp Ring
- ___ QCR3X 1/2" Copper Crimp Ring
- ___ QCR4X 3/4" Copper Crimp Ring
- ___ QCR5X 1" Copper Crimp Ring

Rev. B	Date: 6/26/08	C.N. No. 98690
Dwg. No. 82187		Prod. No. QQPT_X



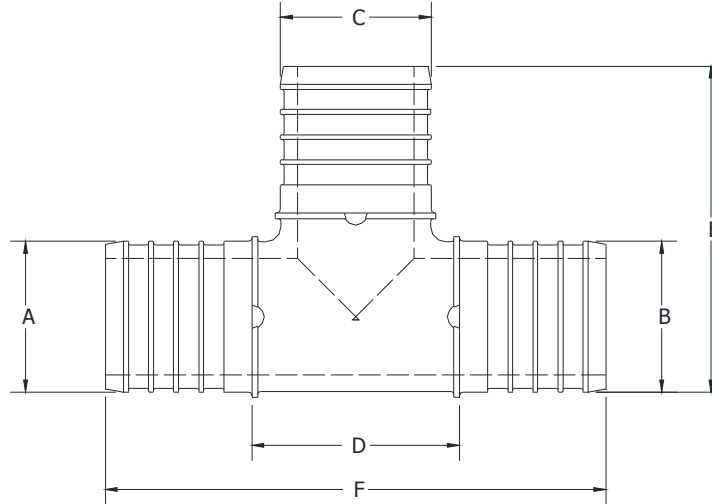
LD QQPT_X

LARGE DIAMETER Qick Sert CR® BARB X BARB X BARB TEE

SPECIFICATION SHEET

TAG _____

Dimensional Data (inches and [mm]) are Subject to Manufacturing Tolerances and Change Without Notice



Part Number	Description	A	B	C	D	E	F
		in [mm]	in [mm]	in [mm]	in [mm]	in [mm]	in [mm]
QQPT664X	1-1/4 [32] barb x 1-1/4 [32] barb x 3/4 [19] barb tee	1.045 [26.5]	1.045 [26.5]	0.668 [17.0]	1.500 [38.1]	1.973 [50.1]	3.900 [99.1]
QQPT665X	1-1/4 [32] barb x 1-1/4 [32] barb x 1 [25] barb tee	1.045 [26.5]	1.045 [26.5]	0.856 [21.7]	1.500 [38.1]	2.123 [53.9]	3.900 [99.1]
QQPT666X	1-1/4 [32] barb x 1-1/4 [32] barb x 1-1/4 [32] barb tee	1.045 [26.5]	1.045 [26.5]	1.045 [26.5]	1.500 [38.1]	2.473 [62.8]	3.900 [99.1]
QQPT774X	1-1/2 [38] barb x 1-1/2 [38] barb x 3/4 [19] barb tee	1.233 [31.3]	1.233 [31.3]	0.668 [17.0]	1.004 [25.5]	2.167 [55.0]	3.400 [86.4]
QQPT775X	1-1/2 [38] barb x 1-1/2 [38] barb x 1 [25] barb tee	1.233 [31.3]	1.233 [31.3]	0.856 [21.7]	1.256 [31.9]	2.317 [58.9]	3.660 [93.0]
QQPT777X	1-1/2 [38] barb x 1-1/2 [38] barb x 1-1/2 [38] barb tee	1.233 [31.3]	1.233 [31.3]	1.233 [31.3]	1.700 [43.2]	2.667 [67.7]	4.100 [104.1]
QQPT884X	2 [51] barb x 2 [51] barb x 3/4 [19] barb tee	1.602 [40.7]	1.602 [40.7]	0.668 [17.0]	1.004 [25.5]	2.601 [66.1]	4.004 [101.7]
QQPT885X	2 [51] barb x 2 [51] barb x 1 [25] barb tee	1.602 [40.7]	1.602 [40.7]	0.856 [21.7]	1.256 [31.9]	2.751 [69.9]	4.255 [108.1]
QQPT888X	2 [51] barb x 2 [51] barb x 2 [51] barb tee	1.602 [40.7]	1.602 [40.7]	1.602 [40.7]	2.200 [55.9]	3.401 [86.4]	5.200 [132.1]

Engineering Specification: Zurn PEX® Qick Sert CR® tee.

The QQPT__X tee is used to branch off a main line or change direction. Molded from Radel®. These fittings, as a system with Zurn PEX tube are pressure rated at 160 PSI [1103 kPa] at 73.3°F [22.9°C], 100 PSI [689 kPa] at 180°F [82.2°C], and 80 PSI [552 kPa] at 200°F [93.3°C]. These fittings are listed by NSF as complying with the following standards: NSF/ANSI Standard 14, NSF/ANSI Standard 61, NSF/ANSI Standard 372, ASTM F877 and CSA B137.5.

Accessories

___	QCR4X	3/4 [19] Copper Crimp Ring
___	QCR5X	1 [25] Copper Crimp Ring
___	QCR6X	1-1/4 [32] Copper Crimp Ring
___	QCR7X	1-1/2 [38] Copper Crimp Ring
___	QCR8X	2 [51] Copper Crimp Ring
___	QCR4XPC	3/4 [19] QickCap® Copper Ring w/ Positioning Cap
___	QCR5XPC	1 [25] QickCap® Copper Ring w/ Positioning Cap
___	QCR6XPC	1-1/4 [32] QickCap® Copper Ring w/ Positioning Cap
___	QCR7XPC	1-1/2 [38] QickCap® Copper Ring w/ Positioning Cap
___	QCR8XPC	2 [51] QickCap® Copper Ring w/ Positioning Cap
___	QGA678CR	Go-Go Gauge for Large Diameter CR Fittings
___	QCRTLDM	Large Diameter Compact Crimp Tool
___	QCRBKIT56-14	14V Battery-Powered Crimp Tool Kit (1 [25], 1-1/4 [32])
___	QBJ6	1-1/4 [32] Crimp Head
___	QBJ7	1-1/2 [38] Crimp Head
___	QBJ8	2 [51] Crimp Head

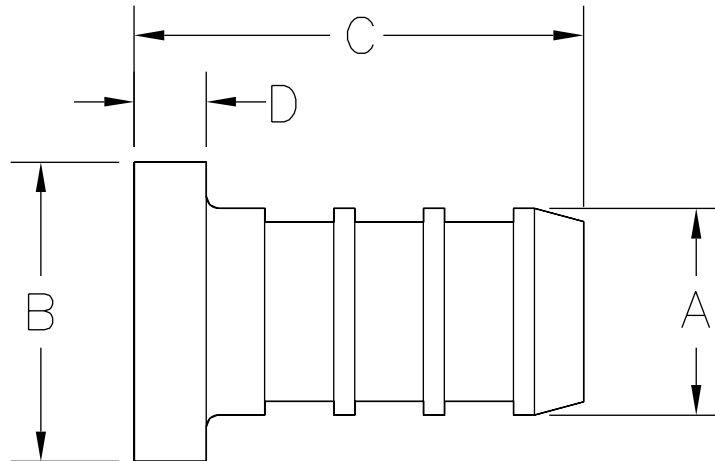
* Regularly furnished unless otherwise specified.



QickSert CR™ Plug – QXP_XP Specification Sheet

Tag _____

Dimensional Data: Inches and [mm] are subject to manufacturing tolerances and change without notice.



Part Number	Description	'A' In. [mm]	'B' In. [mm]	'C' In. [mm]	'D' In. [mm]
QXP2XP	3/8" PEX Barb Plug	0.345 [8.8]	0.50 [12.7]	0.75 [19.1]	0.12 [3.1]
QXP3XP	1/2" PEX Barb Plug	0.471 [12.0]	0.63 [16.0]	0.83 [21.1]	0.13 [3.2]
QXP4XP	3/4" PEX Barb Plug	0.667 [16.9]	0.81 [20.6]	0.75 [19.1]	0.13 [3.2]
QXP5XP	1" PEX Barb Plug	0.856 [21.7]	0.99 [25.1]	0.92 [23.4]	0.14 [3.6]

Engineering Specification: Zurn PEX™ QickSert CR™ plastic test plug. The QXP__XP is molded from Acetal and is designed to be a **temporary** test plug for pressure testing **only**.

Accessories

- ___ QCLP2X 3/8" QickClamp Crimp Ring
- ___ QCLP3X 1/2" QickClamp Crimp Ring
- ___ QCLP4X 3/4" QickClamp Crimp Ring
- ___ QCLP5X 1" QickClamp Crimp Ring
- ___ QCR2X 3/8" Copper Crimp Ring
- ___ QCR3X 1/2" Copper Crimp Ring
- ___ QCR4X 3/4" Copper Crimp Ring
- ___ QCR5X 1" Copper Crimp Ring

Rev.	Date: 10/29/08	C.N. No. 99274
Dwg. No. 83982		Prod. No. QXP_XP



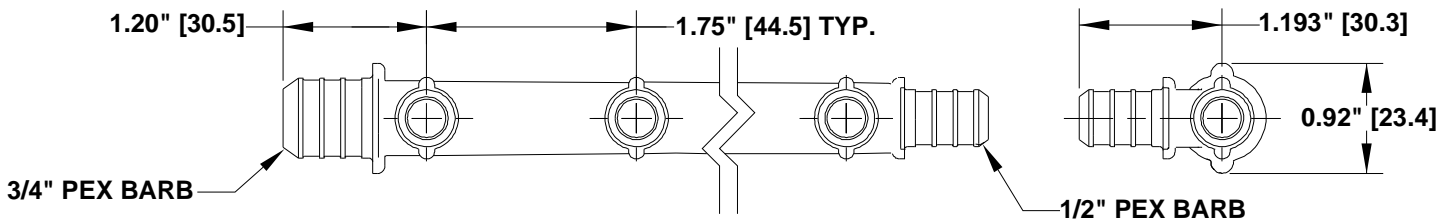
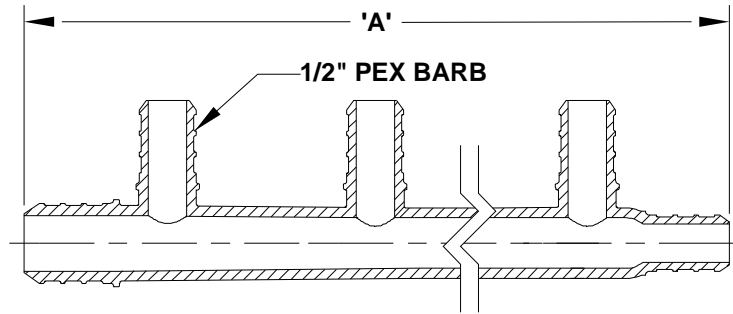
QPM43

QuickSert CR™ Polymer Multi-Port Tees with, 3/4" Inlet and 1/2" Outlet Ports

SPECIFICATION SHEET

TAG _____

Dimensional Data (inches and [mm]) are Subject to Manufacturing Tolerances and Change Without Notice



*Shown as QPM43-4

Part Number	Description	'A'
QPM43-3	(1) 3/4" PEX Crimp Inlet w/ (3) 1/2" PEX Crimp Outlet Ports	4.13" [104.9]
QPM43-4	(1) 3/4" PEX Crimp Inlet w/ (4) 1/2" PEX Crimp Outlet Ports	5.85" [148.6]
QPM43-5	(1) 3/4" PEX Crimp Inlet w/ (5) 1/2" PEX Crimp Outlet Ports	7.56" [192.0]

Engineering Specification: ZurnPEX® QuickSert CR™ Multi-Port Tee. The QPM43_ Multi-Port Tee is used to supply different fixtures from the main line. Molded from Acudel®. Multi-Port Tees, as a system with Zurn PEX® tube, are pressure rated at 160 PSI at 73°F, 100 PSI at 180°F, and 80 PSI at 200°F. These Multi-Port Tees are listed by NSF as complying with the following standards: NSF/ANSI Standard 14, NSF/ANSI Standard 61, ASTM F877, and CSA B137.5, and ASTM F2159.

Accessories

- ___ **QCLP3X** 1/2" QuickClamp™ Crimp Ring
- ___ **QCCL4X** 3/4" QuickClamp™ Crimp Ring
- ___ **QCR3X** 1/2" Copper Crimp Ring
- ___ **QCR4X** 3/4" Copper Crimp Ring

* Regularly furnished unless otherwise specified.



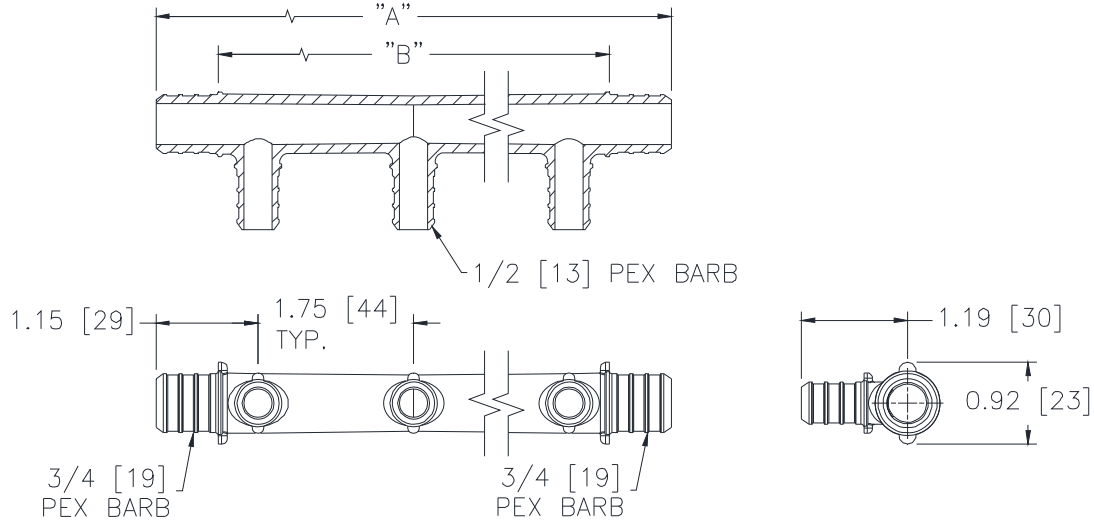
QPM443

QuickSert CR™ POLYMER MULTI-PORT TEES 3/4" INLET X OUTLET W/ 1/2" OUTLET PORTS

SPECIFICATION SHEET

TAG _____

Dimensional Data (inches and [mm]) are Subject to Manufacturing Tolerances and Change Without Notice



*SHOWN AS QPM443-3

QuickSert CR™ Polymer Multi-Port Tees			
Part Number	Description	"A" In [mm]	"B" In [mm]
QPM443-2	(1) 3/4" PEX Crimp Inlet and Outlet w/ (2) 1/2" PEX Crimp Outlet Ports	4.05 [103]	2.65 [67]
QPM443-3	(1) 3/4" PEX Crimp Inlet and Outlet w/ (3) 1/2" PEX Crimp Outlet Ports	5.80 [147]	4.40 [112]
QPM443-4	(1) 3/4" PEX Crimp Inlet and Outlet w/ (4) 1/2" PEX Crimp Outlet Ports	7.55 [192]	6.15 [156]

ENGINEERING SPECIFICATION: QPM443

ZurnPEX® QuickSert CR™ Multi-Port tees. The QPM443- Tee is used to supply different fixtures from the main line. Molded from Acudel®. Multi-Port Tees, as a system with Zurn PEX® tube, are pressure rated at 160 PSI at 73°F, 100 PSI at 180°F, and 80 PSI at 200°F. Multi-Port Tees are listed by NSF as complying with the following standards: NSF/ANSI Standard 14, NSF/ANSI Standard 61, ASTM F877, and CSA B137.5, and ASTM F2159.

ACCESSORIES

- ____ QCLP3X 1/2" QUICKCLAMP™ CRIMPRING
- ____ QCLP4X 3/4" QUICKCLAMP™ CRIMPRING
- ____ QCR3X 1/2" COPPER CRIMP RING
- ____ QCR4X 3/4" COPPER CRIMP RING

* Regularly furnished unless otherwise specified.



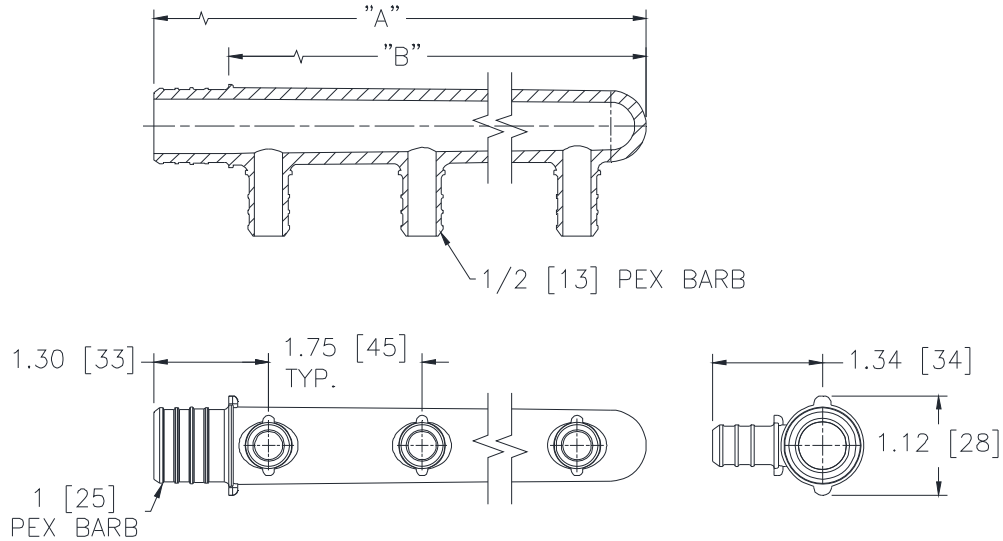
QPM53

QickSert CR™ POLYMER MULTI-PORT TEES 1" INLET WITH 1/2" OUTLET PORTS

SPECIFICATION SHEET

TAG _____

Dimensional Data (inches and [mm]) are Subject to Manufacturing Tolerances and Change Without Notice



*SHOWN AS QPM53-3

QickSert CR™ Polymer Multi-Port Tees			
Part Number	Description	"A" In [mm]	"B" In [mm]
QPM53-3	(1) 1" PEX Crimp Inlet (closed end) w/ (3) 1/2" PEX Crimp Outlet Ports	5.6 [142]	4.75 [121]
QPM53-4	(1) 1" PEX Crimp Inlet (closed end) w/ (4) 1/2" PEX Crimp Outlet Ports	7.3 [185]	6.45 [164]
QPM53-5	(1) 1" PEX Crimp Inlet (closed end) w/ (5) 1/2" PEX Crimp Outlet Ports	9.1 [231]	8.25 [210]

ENGINEERING SPECIFICATION: Zurn QPM53

ZurnPEX QickSert CR™ Multi-Port tees. The QPM53- Multi-Port Tee is used to supply different fixtures from the main line. Molded from Acudel®. Multi-Port Tees, as a system with Zurn PEX® tube, are pressure rated at 160 PSI at 73°F, 100 PSI at 180°F, and 80 PSI at 200°F. Multi-Port Tees are listed by NSF as complying with the following standards: NSF/ANSI Standard 14, NSF/ANSI Standard 61, ASTM F877, and CSA B137.5, and ASTM F2159.

ACCESSORIES

____ QCLP3X	1/2" QICKCLAMP™ CRIMPRING
____ QCLP5X	1" QICKCLAMP™ CRIMPRING
____ QCR3X	1/2" COPPER CRIMP RING
____ QCR5X	1" COPPER CRIMP RING

* Regularly furnished unless otherwise specified.

Zurn Industries, LLC | Zurn PEX, Inc
 116 Maple Street, Commerce, TX U.S.A. 75429 · Ph. 800-872-7277, Fax 800-209-2148
 In Canada | Zurn Industries Limited
 3544 Nashua Drive, Mississauga, Ontario L4V 1L2 · Ph. 905-405-8272, Fax 905-405-1292
www.zurn.com

Rev. A
 Date: 01/05/16
 C.N. No. 133753
 Prod. | Dwg. No. QPM53



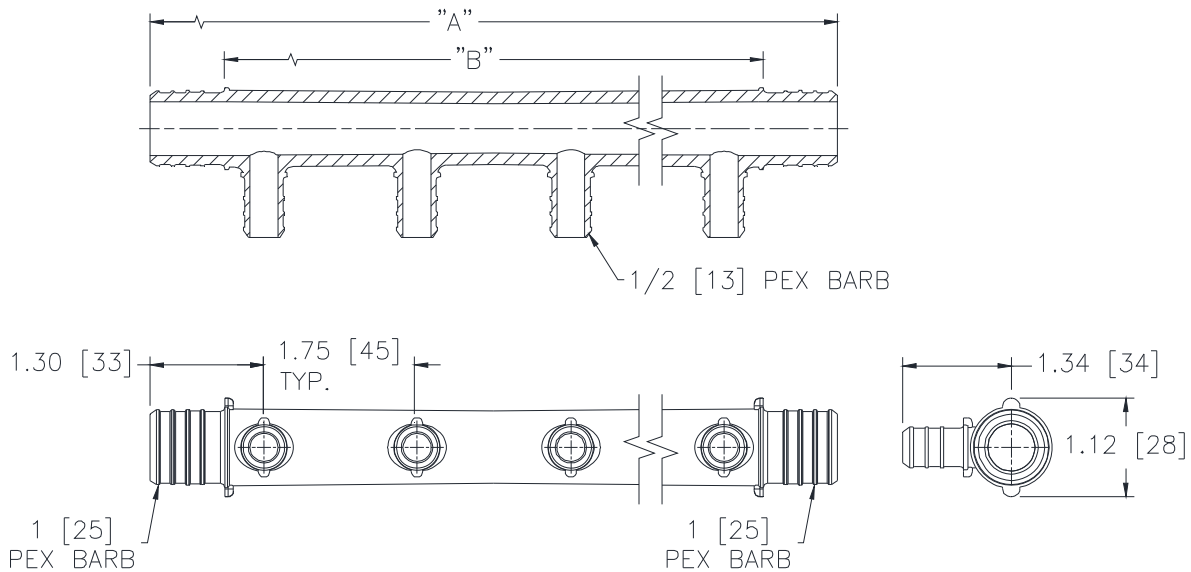
QPM553

QuickSert CR™ POLYMER MULTI-PORT TEES
1" INLET X OUTLET W/ 1/2" OUTLET PORTS

SPECIFICATION SHEET

TAG _____

Dimensional Data (inches and [mm]) are Subject to Manufacturing Tolerances and Change Without Notice



*SHOWN AS QPM553-4

QuickSert CR™ Polymer Multi-Port Tees			
Part Number	Description	"A" In [mm]	"B" In [mm]
QPM553-3	(1) 1" PEX Crimp Inlet and Outlet w/ (3) 1/2" PEX Crimp Outlet Ports	6.1 [155]	4.4 [112]
QPM553-4	(1) 1" PEX Crimp Inlet and Outlet w/ (4) 1/2" PEX Crimp Outlet Ports	7.9 [201]	6.2 [158]
QPM553-5	(1) 1" PEX Crimp Inlet and Outlet w/ (5) 1/2" PEX Crimp Outlet Ports	9.6 [244]	7.9 [201]

ENGINEERING SPECIFICATION: QPM553

Zurn QuickSert CR™ Multi-Port tees. The QPM553-__ Tee is used to supply different fixtures from the main line. Molded from Acudel®. Multi-Port Tees, as a system with Zurn PEX® tube, are pressure rated at 160 PSI at 73°F, 100 PSI at 180°F, and 80 PSI at 200°F. Multi-Port Tees are listed by NSF as complying with the following standards: NSF/ANSI Standard 14, NSF/ANSI Standard 61, ASTM F877, and CSA B137.5, and ASTM F2159.

ACCESSORIES

- ____ QCLP3X 1/2 [13] QICKCLAMP™ CRIMP RING
- ____ QCLP5X 1 [25] QICKCLAMP™ CRIMP RING
- ____ QCR3X 1/2 [13] COPPER CRIMP RING
- ____ QCR5X 1 [25] COPPER CRIMP RING

* Regularly furnished unless otherwise specified.