

LEGEND

TANK TEMP RTD

BALL VALVE

TEMP/PRESSURE GAUGE

DISCONNECT SWITCH

UNION

FLANGE

HEATER

PUMP

STRAINER

HOSE/FLEX PIPE

PRESSURE TRANSMITTER

CHECK VALVE

TEMP-PRESSURE RELIEF VALVE

THERMOSTATIC MIXING VALVE

WIRING FROM EQUIPMENT TO CONTROL PANEL
(ALL WIRING WITHIN BOUNDARY IS SUPPLIED AND CONNECTED)

PIPING

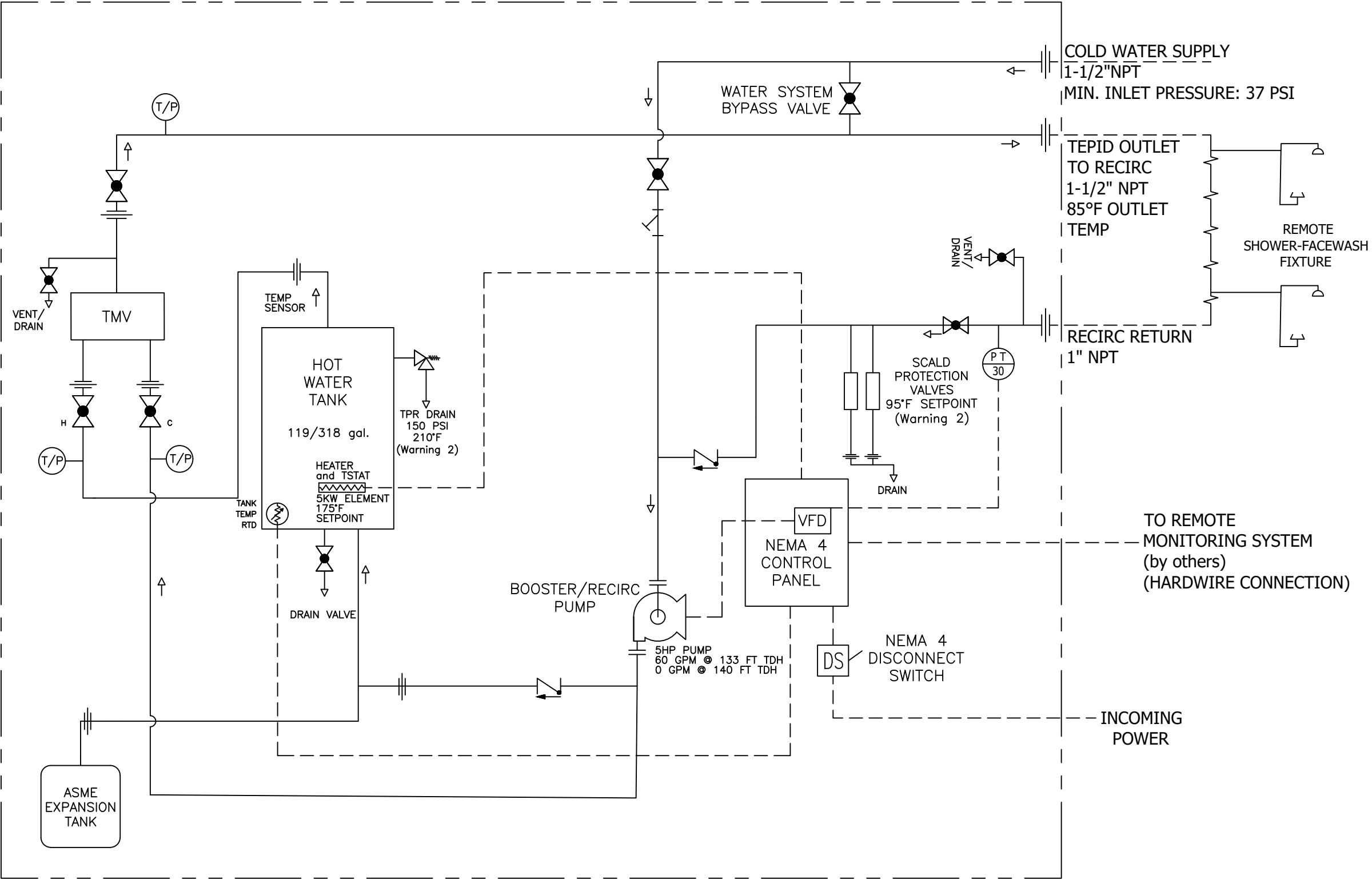
NOTES:

1. PIPING MATERIAL - COPPER TYPE L WITH PRESS AND SOLDER FITTINGS.
2. OPERATING PRINCIPLE: IF A PRESSURE OF 30 PSI + HIGHEST ELEVATED SHOWER AS PER GA IS MAINTAINED AT THE RECIRC RETURN, THEN ALL SHOWERS IN THE LOOP WILL BE ABOVE 30 PSI + HIGHEST ELEVATED SHOWER.

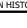
NORMAL: (ALL SHOWERS CLOSED)
SYSTEM PRESSURE IS ABOVE PRESSURE TRANSMITTER SET POINT (30 PSI). VFD WILL DECREASE PUMP SPEED TO MAINTAIN CONSTANT RECIRCULATION RATE. RECOMMENDED 10 GPM RECIRCULATION RATE.

IN OPERATION: (SHOWER OPEN)
WHEN A SHOWER IS ACTIVATED, PRESSURE WILL DROP BELOW THE PRESSURE TRANSMITTER SET POINT (30 PSI) AND THE VFD WILL INCREASE SPEED OF PUMP TO MAINTAIN THE SET POINT.

3. PRESSURE TRANSMITTER SET POINT OF 30 PSI PLUS PRESSURE GAIN BY ELEVATION, TO BE ADJUSTED AT SITE.



NTS Tepad Supply Skid

1/24/24	A	ENGINEERING RELEASE	23-05-037	NE
DATE	REV	DESCRIPTION	ECN	ENGINEER
REVISION HISTORY				
Bradley		THIS PRINT CONTAINS INFORMATION THAT IS PROPRIETARY TO BRADLEY CORPORATION. NO PART OF THIS DOCUMENT SHALL BE REPRODUCED OR TRANSMITTED IN ANY FORM OR BY ANY MEANS, ELECTRONIC OR MECHANICAL, INCLUDING PHOTOCOPYING, RECORDING, OR BY ANY INFORMATION STORAGE AND RETRIEVAL SYSTEM, WITHOUT THE WRITTEN PERMISSION OF BRADLEY CORPORATION.		
				
TOLERANCES UNLESS OTHERWISE SPECIFIED		DRAWN BY: ---		
FRACTIONS ± 1/32		DATE: 1/24/2024		
3 PLACE ± .020		SCALE:		
2 PLACE ± .03		REF.:		
1 PLACE ± .1		FIRST ON:		
ANGLES ± 3°		ALL THREADS TO BE CLASS 2 ALL FINISH DIMENSIONS ARE PMS DO NOT SCALE DRAWING		
MATERIAL:				
NAME: P&ID NS182 - GA-VFD NAVIGATOR SKID SYSTEM				
DWG. NUMBER: S83-475				SHEET 1 OF 1