

Specifications

Sundry

466441

maharam

Application

Seating

Note: This textile is available as a made-to-order pillow.

Characteristics

Content: 30% Post-Consumer Recycled Polyester, 20% Solution-Dyed Nylon, 18% Rayon, 16% Polyester, 16% Wool

Finish: Stain Repellent

Additional Finishes Available: Alta, Alta Food & Beverage, Nanotex, Nanotex with Impermeable Barrier

Backing: Acrylic

Width: 54" (137cm)

Repeat: 29" V, 13 3/4" H

(74cm V, 35cm H), Suitable for non-match application

Railroaded Repeat: 13 3/4" V, 29" H

(35cm V, 74cm H), Suitable for non-match application

Bolt Size: 30 yards (27 m)

Weight: 25.9 oz/ly (800 gr/lm)

Country of Origin: USA

Note: Shown railroaded.

Price

Contact your sales representative for pricing.

Maintenance

S-Clean with mild, water-free dry cleaning solvent.



Testing

Abrasion: ASTM D4157, 90,000 double rubs Wyzenbeek

Note: Abrasion test results exceeding ACT Performance Guidelines are not an indicator of product lifespan.

Multiple factors affect fabric durability and appearance retention.

Flammability: BS 5852 - PART 1*

BS 5852 Crib 5*

CAL 117-2013

EN 1021-1

EN 1021-2*

*passes with additional treatment

Lightfastness: AATCC 16.3, 40+ hours



Specifications

Sundry

466441

maharam

Environmental

Greenguard Gold Certified
GRS Certified Content
Contains Bio-Based Content
Contains Recycled Content
FR Free

Warranty

3 years.

© 2019 Maharam

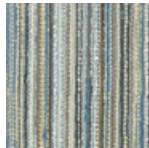
Complete product information at maharam.com
800.645.3943



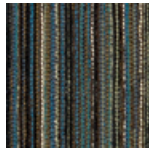
001 Lemur



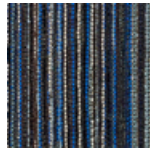
002 Plaza



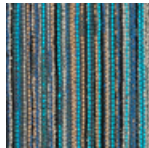
003 Landfall



004 Canteen



005 Orbit



006 Freshwater



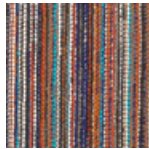
007 Limelight



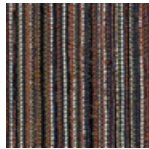
008 Habitat



009 Palace



010 Tribute



011 Pub