

Name

Soft Ridge

Designer

Suzanne Tick

Style No.

7013

Collection

Starting Point

Use

Direct Glue Wall

Content

100% Polyester
(Recycled Polyester
content varies by color)

Special**Characteristics**

Bleach Cleanable

Environmental

Recycled Content



Perlite 7013-01



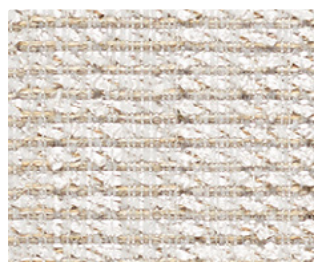
Pale Onyx 7013-07



Etching 7013-02



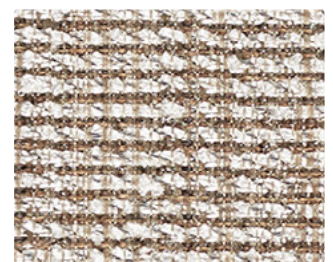
Tumbled Marble 7013-03



Sandblast 7013-06



Raku 7013-05



Brindle 7013-04

Name **Soft Ridge**

Style No. **7013**

Designer Suzanne Tick

Specification

Use: Direct Glue Wall

Content: 100% Polyester (Recycled Polyester content varies by color)

Raku: 70% Polyester, 30% Post Consumer Recycled Polyester

Brindle: 56% Post Consumer Recycled Polyester, 44% Polyester

Perlite, Etching: 80% Polyester, 20% Post Consumer Recycled Polyester

Tumbled Marble: 75% Polyester, 25% Post Consumer Recycled Polyester

Pale Onyx, Sandblast: 85% Polyester, 15% Post Consumer Recycled Polyester

Weight: 13 oz per linear yard

Width: 54"

Pattern Repeat: 13.5" Horizontal, 80" Vertical

Directional: Yes

Finish

Acrylic Backing
PFAS Free Stain Repellent

Performance

Breaking Strength: ASTM D5034 Warp 155.6 lbf, Fill 335.9 lbf

Colorfastness to Light: AATCC 16, Grade 5 at 40 Hours

Colorfastness to Crocking: AATCC 8, Wet Class 5, Dry Class 5

Flame Retardancy

ASTM E84 Adhered Class A or 1

Maintenance

WS, Clean with either a water-based or solvent-based cleaning agent.
Bleach Cleanable: 10% (9:1 Ratio), wipe with water after solution.

Environmental

Recycled Content

Origin

USA

Variations in surface texture are inherent to this fabric. Dye lots may vary slightly from samples shown. Samples shown off the bolt. Installation guidelines available at luumtextiles.com.



Canada
877.705.LUUM
luumtextiles.ca

USA
877.705.LUUM
luumtextiles.com

International
919.464.2922
luumtextiles.com

cdn/us/int/05-16

© Luum™ 2016, all rights reserved.

*™ Trademarks used under license by Luum™, Soft Ridge™

*Certification Marks owned by the Association for Contract Textiles, Inc.

NA-SC-305-7013