

Forge Product Information

NOTE: Forge storage must be anchored to a wall (hardware not included); not intended for freestanding use.

WorkSurfaces

Forge offers worksurfaces in both HPL Laminate and Solid Surfaces.

Laminate worksurfaces have a 3-ply balanced construction. Tops are 1 3/16" thick with coordinating PVC edges. Worksurfaces feature 3mm eased (PVC) edge on the front; sides and back have coordinating 1mm PVC edge band.

Forge worksurfaces are available in all JSI standard HPL's, consisting of 19 wood grain patterns and 7 solid colors. Each has a coordinating PVC edge color that is automatically used with the standard laminates. The wood grain laminate features an embossed grain to hide finger prints and light scratches. The solid laminate is smooth to the touch with a semi-matte finish.

The chart below lists the laminates available on the Forge product.

HPL Wood Grain Pattern Laminates

BEL	Belair	MIN	Mineral
BRK	Brickdust	MCH	Mocha
CSK	Cask	OBK	Outback
CLY	Clay	PIL	Pilsner
EGR	Egret	PIN	Pinnacle Walnut
FAW	Fawn	UMB	Umber
FLN	Flint	VAL	Valley
FLO	Florence Walnut	WLH	Walnut Heights
LOF	Loft	WEA	Weathered Ash
MES	Mesa		

HPL Solid Laminates

ALB	Alabaster	SHD	Shadow
BLK	Black	SLG	Slate Grey
BBL	Bridal Blanco	ZEN	Zen Grey
DWH	Designer White		

In addition, an extensive list of HPL laminates from Wilsonart and Formica are available at the Tier 2 price. Selecting from the Tier 2 laminates will require a PVC banding to be specified from the standard list.

Solid surface worksurfaces are 1" thick and have a moisture-resistant core. Front edge features a 3mm radius eased edge, sides and back have finished flat edge. Worksurfaces are available in 4 standard JSI colors.

DWH	Designer White	ONX	Black Onyx Mirage
HST	Hot Stone	SOG	Soothing Grey

Additional Wilsonart and Corian finishes are available in 4 pricing tiers

Cabinet Construction

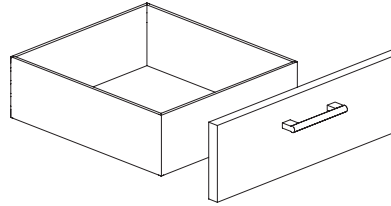
Forge Laminate features TFL (thermally fused laminate) chassis with standard banding. Worksurfaces are available in a HPL (high pressure laminate) with standard banding.

Thermally fused laminate (TFL) with all edges fully banded. Interior material matches exterior. 3/8" thick side panels. Adjustable glides on base cabinets, storage cabinets and lockers; they provide 1" adjustment. Must use toe kick or cove molding to finish off base cabinets.

Grain direction runs vertically on all door/drawer fronts. Door and drawer fronts are banded with a 2mm banding.

Drawers

The unidirectional V-Fold drawer box is a durable miter-fold drawer structure which is glued and doweled. The 1/2" thick drawer sides are wrapped in a high grade white vinyl, with an attached front. The drawer front is attached to the four sided box.



Drawer Suspension

High quality soft close, silver drawer suspension carries a lifetime warranty. Drawers have 100% full extension with over travel. Slides feature steel ball bearings for longer wear and positive, cushioned in/out stops.

Drawer Liner

Seamless, one-piece, white drawer liner available for 18" and 24" wide drawers

Hinges

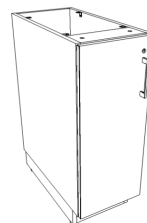
Concealed Euro soft close hinges with 110° opening and four adjustment points

Locking

Cabinets offer locking to provide maximum security and flexibility in configuration. Up-charge applies. Locks are available as a standard keyed lock or a digital keyless lock.

When standard locks are ordered, units are shipped randomly keyed. Key alike units are available upon request for no additional charges. Removable cores for in-field re-keying are standard. Lock face color is available in Arctic Silver or Matte Black.

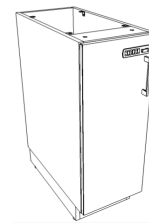
Digital Keyless Locks come pre-programmed for shared use, but can be field programmed for dedicated use. To lock, enter a 4 to 8 digit code and press the lock button. To unlock reenter the previous 4 to 8 digit code and press the unlock button. User guide ships with cabinet. Keyless lock will be oriented vertically on drawer units and horizontally on doors. See page 21 for additional information. Lock face is available in a black finish.



Standard Lock



Keyless Lock (drawer)



Keyless Lock (door)

Wall Panels

3/8" thick with standard TFL 1/2" banding.



CORPORATE OFFICE
225 CLAY STREET
JASPER, INDIANA 47546



800.457.4511 **TOLL FREE**
812.482.3204 **OFFICE**
812.482.1548 **FAX**



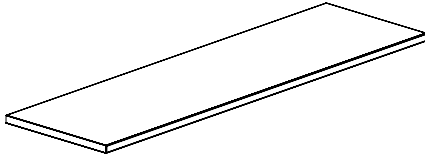
JSIFURNITURE.COM



CONTACT JSI

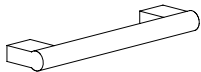
Forge Product Information

Top Edge Profile



Tops feature a 3mm radius front edge, sides and back are flat

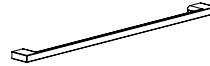
Pull and Color Options



Bar
Matte Black MBK
Polished Nickel PNK



Sweep
Matte Black MBK
Matte Nickel MNK



Delve



Prospect

Metal Finish Standard

ABZ	Aged Bronze	MBK	Matte Black
ASL	Arctic Silver	PEW	Pewter
BWH	Bright White	SBZ	Soft Bronze
GLD	Gold	SNK	Soft Nickel

Metal Finish Upcharge

ANL	Antique Linen	EBL	Electric Blue	POW	Porcelain White
BLJ	Blue Jean	EMC	Emerald City	SPA	Space Cadet
CAP	Candy Apple	EVP	Evergreen Pine	SPP	Sparkling Peach
CAB	Cashmere Beige	GOH	Golden Honey	SPR	Spiced Raisin
CDU	Copper Dust	MWH	Midnight Whisper	SMK	Stormy Sky
DST	Desert Stone	MUS	Mustard Seed	TFB	Toffee Brown
DUP	Dusty Petal	OLV	Olive Fog	VMA	Vintage Mahogany

Bar, Sweep and Delve are ADA compliant.

Pull Alignment

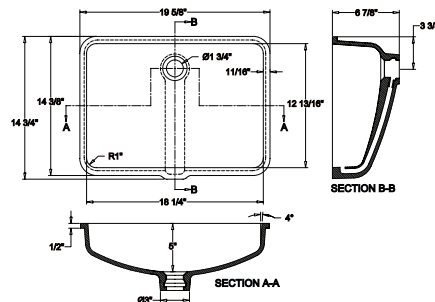
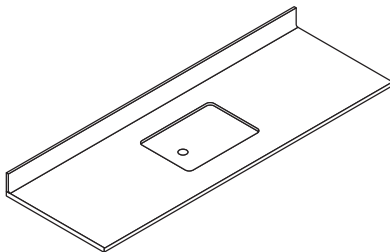
Bar, Sweep and Delve pulls are mounted on the front of drawer/door. Prospect pull overlays the top of the drawer and door front. Bar and Sweep pulls are standard in one length for every application. Delve and Prospect pulls offer an enhanced aesthetic on 30" - 36" wide drawer cabinets with an elongated version. In these cases, the longer pull is used in appropriate applications - user need not specify.

Boring Dimensions

24" wide or smaller	30" & 36" wide
Sweep, Delve and Bar - 128mm	Delve - 320mm
Prospect - 216mm	Prospect - 419mm

Integrated Sink

Sink is always Designer White independent of selection of worksurface. Sink location is available in 1" increments from left side of worksurface to centerline of sink with minimum of 12" to centerline from either edge of surface. Sink should always be centered over sink cabinet. Drain hole is nominally 1 3/4" diameter and accepts standard drain hardware (not included).



CORPORATE OFFICE
225 CLAY STREET
JASPER, INDIANA 47546



800.457.4511 **TOLL FREE**
812.482.3204 **OFFICE**
812.482.1548 **FAX**



JSIFURNITURE.COM



CONTACT JSI

Forge Specifying Modular Casework

Modular casework requires careful coordination within the building architecture. It is important to take a proactive approach to identify where the product should seamlessly integrate with essential building elements and interface with various trades, such as electrical, plumbing, flooring, and equipment.

Note: This planning guide is intended to complement comprehensive price list details, electronic specification tools, and website resources to assist in the design and order selection.

Construction professionals may request Division 12 specifications. Forge specifications may be found in the Forge Design Tools section on our website.

Planning Tip:

It is important to understand any compliance or guidelines that apply to the project such as ADA compliance, FGI Guidelines, local codes, etc.



CORPORATE OFFICE
225 CLAY STREET
JASPER, INDIANA 47546



800.457.4511 **TOLL FREE**
812.482.3204 **OFFICE**
812.482.1548 **FAX**



JSIFURNITURE.COM



CONTACT JSI

Forge Specification Checklist

Before finalizing a quote or purchase order the customer should check for accuracy and completeness. The checklist provided can be used as a general guide for the specification and design of Forge modular casework. However, the specific requirements may vary depending on the details of the project.

The information presented here is for informational purposes only. The purchaser should conduct their own due diligence to determine the suitability of the products for their specific application.

- 1** **Verify casework dimensions match overall architectural plans.**
- 2** **Review finishes and options.**
 - NOTE: Left and right handedness is determined when facing the units.
 - Locking requirements (if applicable).
- 3** **Confirm necessary worksurface support brackets are specified.**
- 4** **Ensure filler panels are specified where needed.**
- 5** **Toe kick or cove molding is required to complete installation of base cabinets, storage cabinets, and lockers.**
- 6** **Identify specials and confirm custom quotes.**
- 7** **Provide detailed drawings, clearly indicating any special installation instructions (i.e., field cuts, plumbing fixtures, etc.)**
- 8** **Communicate and coordinate separately purchased products such as cove molding, drain hardware, faucets, installation hardware, etc.**
 - REMINDER: Forge storage must be anchored to a wall.
It is the responsibility of the installer and/or contractor to select and install the proper fasteners in the structural wall.
- 9** **Confirm project compliance to applicable codes and/or guidelines.**

Forge Overview with Size Options

The superior craftsmanship of Forge ensures reliability throughout the product's lifespan. With a diverse selection of finishes and materials, Forge makes it simple to specify for both new construction and renovations of existing facilities. Forge storage provides a wide array of options in various depths, widths, and heights, allowing for convenient configuration. See the chart below for a quick reference of sizes available by type.

Note:

Forge storage must be anchored to a wall (hardware not included); not intended for free-standing use. Reference assembly instructions for more details.

Planning Tip:

While we offer a wide range of products to accommodate many possible solutions, we also recognize the needs for our products to be modified from our standard offering. To see if the desired modification is possible, please contact our customer service department for a quote. Note that order quantities and material availability can affect the quote.

·NOTE: All dimensions are nominal

Cabinet Type	Available Depth	Available Width	Available Height	Comments
Base Cabinets	24"	12", 15, 18, 21, 24, 30, & 36"	33 & 35"	
Wall Hanging Base	19"	12", 15, 18, 21, 24, 30, & 36"	24"	
Upper Cabinets	14"	12", 15, 18, 21, 24, 30, & 36"	24 & 30"	Sloped Cabinet Heights Are 29 & 35"
Storage Cabinets	19" & 24"	12", 15, 18, 21, 24, 30, & 36"	78 & 84"	Sloped Cabinet Heights Are 85, 87, 91, & 93
Locker Cabinets	19" & 24"	12", 15, 18, 21, & 24	78 & 84"	Sloped Cabinet Heights Are 85, 87, 91, & 93
HPL Worksurfaces	20" & 25"	12 -120"	1 3/16 & 5 3/16"	2nd Available Height Refers To The Backsplash
Solid Surface Worksurfaces	20" & 25"	12 -120"	1 & 5"	2nd Available Height Refers To The Backsplash
Wall Panels	¾"	18, 21, 24, 30, & 36"	18, 24, 30, 36, & 42"	
End Panels	24"	¾"	33 & 35	
Fillers				
Toe Kicks	¾"	11 ½ - 96"	4"	
Drawer Inserts		18 & 24"		

Choosing between wall suspended or floor extended options can impact space planning, the budget, and potential future modifications in various ways.

Base Cabinets

- Can have worksurfaces that extend to 24 ½" deep.
- Requires toe kick or cove molding to finish base trim.
 - May require coordination with the flooring trade.
- Available in either 32 ½" & 35" high to accommodate different planning configurations.
- All cabinets are 24" deep
- Includes adjustable glides

Wall Hanging Base Cabinets

- Can have worksurfaces that extend to 19 ½" deep.
- Allows for easier cleaning
 - Can be reconfigured or serviced without requiring coordination with the flooring trade.
- All cabinets are 24" high. Above finished floor height, depends on installation height
- All cabinets are 19" deep



Forge Cabinet Interior Dimensions

Below is an overview of interior dimensions.

Call customer service if exact dimensions are needed for a particular model.

Note:

For interior width on open cabinets, take cabinet width minus 1/2".

Example: 24" wide cabinets, have an interior width of 22 1/2".

For interior width on hinged door cabinets, take cabinet width minus 2 1/4" (to allow for hinge clearance)

Example: 24" wide hinged door cabinet has an interior clearance of 21 3/4"

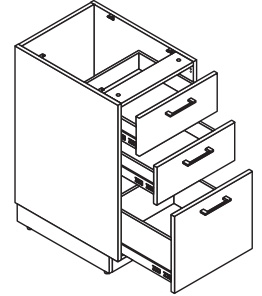
<p>24" DEEP X 32 1/2" HIGH BASE CABINETS</p> <p>22-1/16" D 26-15/16" H</p>	<p>24" DEEP X 35" HIGH BASE CABINETS</p> <p>22-1/16" D 29-7/16" H</p>	<p>19" DEEP X 24" WALL HANGING BASE CABINETS</p> <p>17" D 21-15/16" H</p>	
<p>14" DEEP X 24" HIGH UPPER CABINETS</p> <p>12 1/4" D 21" H</p>	<p>14" DEEP X 30" HIGH UPPER CABINETS</p> <p>12-1/4" D 27" H</p>	<p>14" DEEP X 24" HIGH UPPER CABINET WITH MICROWAVE SHELF</p> <p>22-1/2" D 24" H</p>	<p>14" DEEP X 30" UPPER CABINET WITH MICROWAVE SHELF</p> <p>22-1/2" D 30" H</p>
<p>19" DEEP X 78" HIGH STORAGE CABINETS</p> <p>17-11/16" D 72-15/32" H</p>	<p>19" DEEP X 84" HIGH STORAGE CABINETS</p> <p>17-11/16" D 78-15/32" H</p>	<p>24" DEEP X 78" HIGH STORAGE CABINETS</p> <p>22 11/16" D 72-15/32" H</p>	<p>24" DEEP X 84" HIGH STORAGE CABINETS</p> <p>22-11/16" D 78-15/32" H</p>
<p>19" DEEP X 78" HIGH STORAGE LOCKER</p> <p>17-11/16" D 35-7/8" H 35-7/8" H</p>	<p>19" DEEP X 84" HIGH STORAGE LOCKER</p> <p>17-11/16" D 38-7/8" H 38-7/8" H</p>	<p>24" DEEP X 78" HIGH STORAGE LOCKER</p> <p>17-11/16" D 17-3/8" D 17-3/8" D 17-3/8" D 17-3/8" D</p>	<p>24" DEEP X 84" HIGH STORAGE LOCKER</p> <p>17-11/16" D 18-7/8" D 18-7/8" D 18-7/8" D 18-7/8" D</p>

Forge Drawer Interior Dimensions

Drawer Sizes:

Use the charts below to determine the interior drawer dimensions based on cabinet type and size.

Cabinet Type	Drawer One	Drawer Two	Drawer Three	Drawer Four
Base One Drawer	4"H			
Base Two Drawer	8"H	8"H		
Base Three Drawer	4"H	4"H	8"H	
Base Four Drawer	4"H	4"H	4"H	4"H
Wall Hanging Base One Drawer	4"H			
Wall Hanging Base Two Drawer	4"H	4"H		
Wall Hanging Base Three Drawer	4"H	4"H	4"H	



4"H Drawer Dimensions Drawer Interior Dimensions

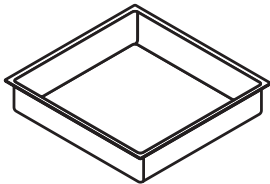
Cabinet Width	Depth	Width	Height
12"	15"	8-7/16"	3-3/16"
not	15"	11-7/16"	3-3/16"
18"	15"	14-7/16"	3-3/16"
21"	15"	17-7/16"	3-3/16"
24"	15"	20-7/16"	3-3/16"
30"	15"	26-7/16"	3-3/16"
36"	15"	32-7/16"	3-3/16"

8"H Drawer Dimensions Drawer Interior Dimensions

Cabinet Width	Depth	Width	Height
12"	15"	8-7/16"	7-3/16"
15"	15"	11-7/16"	7-3/16"
18"	15"	14-7/16"	7-3/16"
21"	15"	17-7/16"	7-3/16"
24"	15"	20-7/16"	7-3/16"
30"	15"	26-7/16"	7-3/16"
36"	15"	32-7/16"	7-3/16"

Planning Tip:

Removable drawer liner model 40CDBL184 can be used with any 18" wide cabinet with a 4"H drawer. Drawer liner model 40CDBL244 can be used with any 24" wide cabinet with a 4"H drawer.



Forge Sink Cabinets

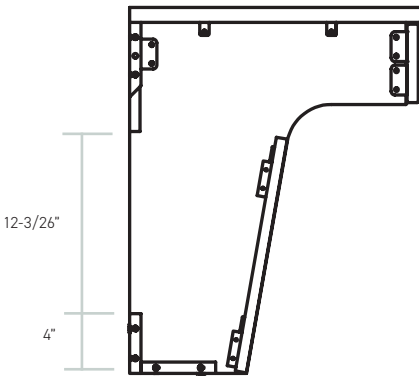
Sink cabinets are available in both base cabinet and wall hanging base styles. All sink cabinets have an open top and open back to accommodate plumbing fixtures. Sinks should be centered above sink cabinet.

Plumbing must be coordinated and communicated with responsible trades.

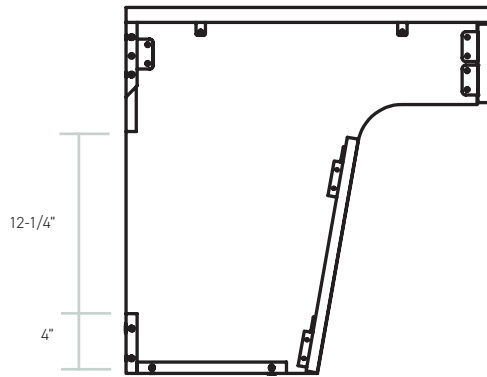
See below for plumbing clearance zones per sink cabinet type.

Note:

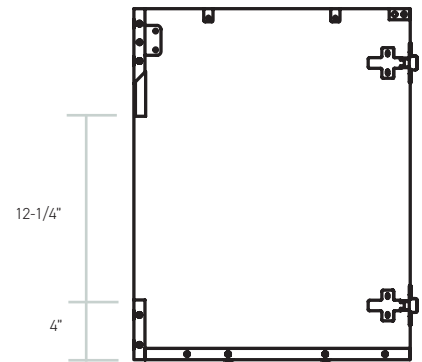
Consider wall hanging base mounting height and leveling glide adjustment on base cabinets if height from finished floor is needed.



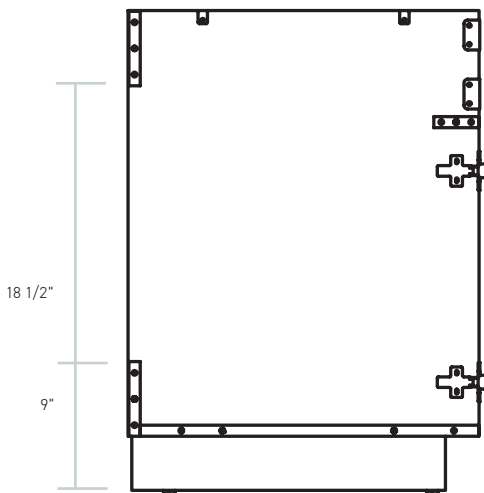
19" D ADA SINK CABINET



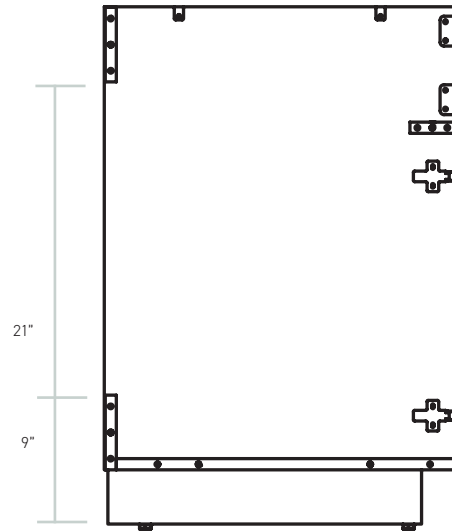
24" D ADA SINK CABINET



19" D ADA SINK CABINET



24" D X 33" H BASE SINK CABINET



24" D X 35" H BASE SINK CABINET

Forge Worksurfaces

Worksurfaces attach to the top cabinets and are available in both solid surface and HPL. Widths are offered in 1" increments offering ease of flexibility and scalability to design the perfect solution for any environment. Surfaces are sized to provide a ¼" overhang on the front.

Solid Surface Worksurfaces

- Have a thickness of 1"
- User edge has a 3mm (1/8") radius. Sides and back are flat.
- Available with or without a 4" high integrated backsplash
- Integrated sinks are also available on models with integrated backsplash. See page 12 for additional details on worksurfaces with integrated sinks.
- 4" High backsplash and side splashes are available. Requires joints to be sealed in the field.
- Cut outs for faucets are not included. Surface must be cut in the field or contact our customer service department for a quote.
- Waste ring, model: GPWSWR, can be specified separately. Surface must be field cut for installation.
- Available in standard JSI patterns as well as additional patterns from Wilsonart® and Corian®
 - See price list or electronic spec tools for complete offering.
- Can span up to 36" without additional support.



HPL Worksurfaces

- Have a thickness of 1 3/16"
- Front has a 3mm eased (PVC) edge. Side and back edges have matching 1mm (PVC) edge band.
- Available with or without 4" high backsplash. Backsplashes are a separate piece and are adhered to the wall. Requires seams to be sealed in the field.
- 4" high side splashes are available. Requires seams to be sealed in the field.
- If sink is desired, it must be field cut for installation or contact customer service department for a quote.
- Waste ring, model: GPWSWR, can be specified separately. Surface must be field cut for installation.
- Forge offers standard JSI laminates as well as select patterns from Wilsonart® and Formica®
 - See price list or electronic spec tools for complete offering.
- Can span up to 48" without additional support.



Planning Tips:

- Corner worksurfaces are available.
 - See page 13 for more details.
- A radius or eased profile can be added to the sides of worksurfaces as a special through our customer service department.
- Only drop-in sinks should be installed in the field.
- Confirm any necessary field cuts are noted on drawings.

Forge Worksurface Supports + Accessories

Worksurfaces require supports when not attached to cabinets. Solid surface worksurfaces can span up to 36" without additional support. Laminate worksurfaces can span up to 48" without additional support. Forge offers multiple support brackets to accommodate various applications.

Hardware to attach brackets to worksurfaces are included. It is the responsibility of the installer and/or contractor to select and install the proper fasteners in the structural wall.



WORKSURFACE BRACKETS: GPWSBRKT18W (white) & GPWSBRKT188 (black)

- Can be specified to support the end of the worksurface. The bracket works with both the 19 ½" and 24 ½" D surfaces. Bracket should be installed minimum of 2", maximum of 8" from worksurface end.
- *IMPORTANT NOTE: The bracket must be installed on a wall stud, or banding/blocking may be required.



L-BRACKETS: GPLBRKT24 & GPLBRKT20

- Can be used to secure a worksurface end directly to a storage cabinet or wall.
- Bracket has a silver finish.
 - GPLBRKT24 should be used with 24 ½" D worksurfaces.
 - GPLBRKT20 should be used with 19 ½" D worksurfaces.
 - One GPLBRKT20 is required to support corner worksurface at wall.



EDGE SUPPORTS: GPLBRKT04

- Base end panel application: Use two brackets to connect the worksurface to the end panel.
- Additional bracket can be used to anchor the end panel to the wall.
- Two brackets may also be used in place of L-bracket to attach a worksurface to a storage cabinet.



FLAT BRACKET: GPFBRKT

- Is required for use with corner worksurfaces. Flat brackets are also required where two worksurfaces meet and there are no cabinets for support. Two brackets required at each seam.



SUPPORT RAIL: GP0243SB

- Can be used to increase the unsupported span on solid surface worksurfaces or for additional support on laminate worksurfaces.
 - Model GP0243SB is used for spans from 43" W to 50" W
 - Model GP0237SB is used for spans from 37" W to 43" W



SUPPORT BRACKET FOR END PANEL: GPEPSB

- Is used to support a base end panels that are not attached to the wall. Two edge supports are still needed to attach the worksurface to the end panel.



WASTE RING: GPWSWR

- Is available for field installation. It can be used with solid surface and laminate worksurfaces and fits a 6" diameter cut.



Forge Side Splashes

Side splashes are available in both solid surface and HPL. Multiple widths are offered to accommodate specific application. Side splashes are recommended when a sink is next to a storage cabinet or wall to protect the adjacent surface.

Note:

Side splashes are sized to be used with a backsplash. If side splash is used without a backsplash, contact our customer service department for a quote.

When side splash is used against a wall, specify standard side splash models (*SSS or *SSH). These units are longer and allow side splash to align with front of worksurface.

When side splash is used against a storage cabinet, specify Flush with Storage models (*SSFS or *SSFH). These units are shorter and allow side splash to align with depth of cabinet chassis on storage cabinet.

Solid Surface Side Splashes:

- Have a thickness of ½"
- Solid surface side splashes are handed. Left and right handedness is determined when facing the units.
- Must specify whether used with integrated or flat backsplash.



HPL Side Splashes:

- Have a thickness of ¾"
- HPL side splashes are non-handed

Planning tips:

- Side splash sits on surface and against the backsplash. Usable worksurface width will be reduced by the thickness of the side splash(es). Requires seams to be sealed in the field.
- Side splashes must be adhered to a wall or storage cabinet in the field.
 - See assembly instructions for further details.



Forge Integrated Sink Worksurfaces

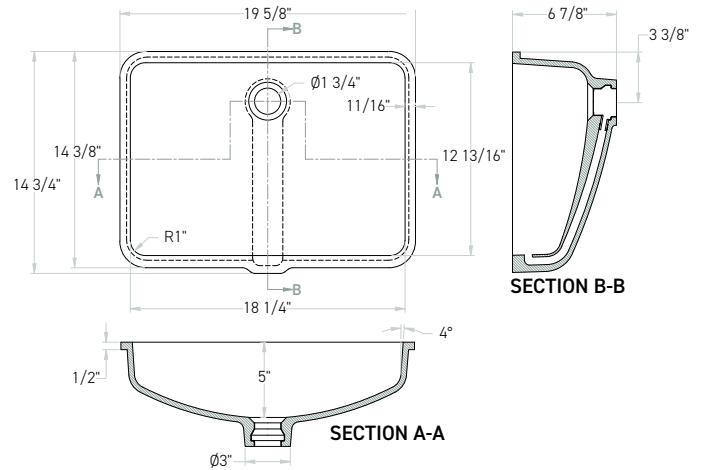
Solid surface worksurfaces with integrated backsplash and sink offer a seamless design and clean aesthetic. They are compatible with all standard Forge sink cabinets.

Note:

Plumbing must be coordinated and communicated with responsible trades.

Planning Tips:

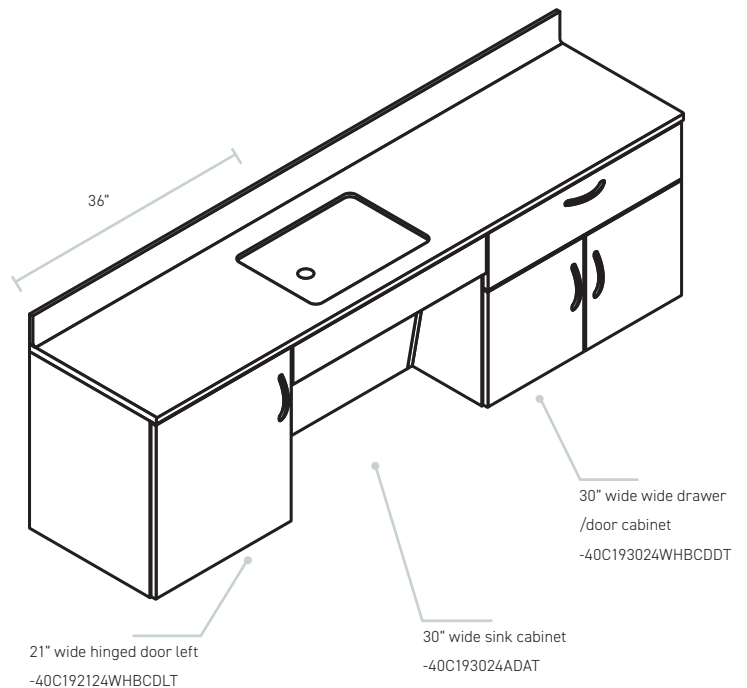
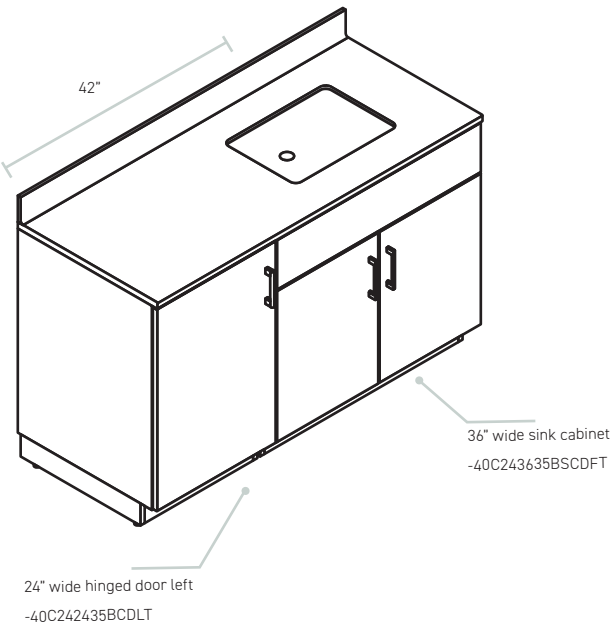
- Drain hardware is not included and must be purchased separately. 1½" drain size.
- Cutout for faucet is not included. Faucet to be field cut for installation or contact our customer service department for a quote.
 - Maximum faucet hole size for the 19" Integrated Sink is 2 ¼"
- Sink color is Wilsonart® Designer White.
- Sink location is available in 1" increments from the left side of the worksurface to centerline of sink width minimum of 12" to centerline from either edge of surface.
 - See location examples below.
- Sink should always be centered over sink cabinet.
- Verify worksurface width and sink location accommodation fillers, if applicable.
- Confirm any necessary field cuts are noted on drawings.



Integrated Sink Location Calculation Examples

Example one: 24" cabinet + 18" (½ of 36" cabinet) = 42" from left sink location.

Example two: 21" cabinet + 15" (½ of 30" cabinet) = 36" from left sink location.



Forge Corner Applications

Corner worksurfaces are available in both solid surface and high-pressure laminate and are intended to be used in conjunction with corner fillers. Corner worksurfaces can be used in both base cabinet and wall hanging base cabinet applications.

Note:

Integrated sinks are not available on corner worksurfaces.

When 19½" depth rectangular surfaces are used *2424 Corner worksurface models should be used.

When 24½" depth rectangular surfaces are used *2929 Corner worksurface models should be used.

Planning Tips:

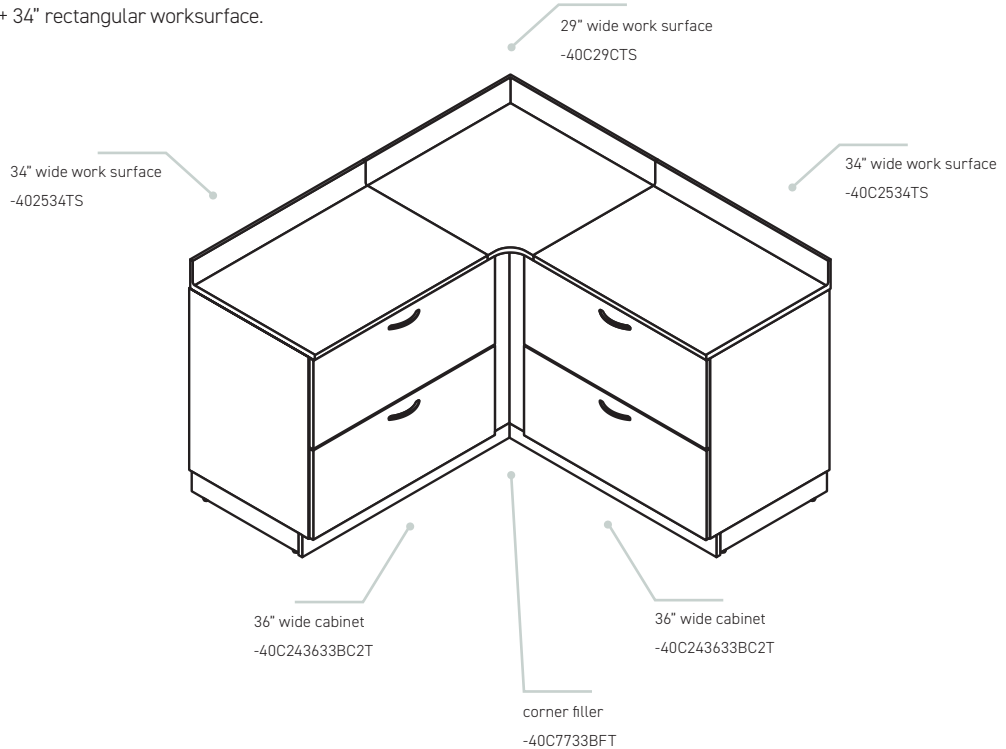
- Adjacent worksurface widths should be reduced 2" each to accommodate corner worksurface and allow space for flat bracket installation.
 - See example below
- Requires four flat brackets (GPFBRKT) and one L-bracket (GPLBRKT20) to be ordered separately.
 - See page 9 for more details.
- Backs of worksurfaces and storage should always be against a wall.
 - Not intended to create a peninsula application
- Corner worksurfaces will be attached to the wall and adjacent surfaces for stability.
 - See assembly instructions for further details

Note:

Laminate grain direction runs diagonal. Consider solid surface pattern selection in corner applications.

Work Surface Width Calculation Example

Example: 36" cabinet + corner filler + 36" cabinet = 34" rectangular worksurface + 29" corner worksurface + 34" rectangular worksurface.



Forge Toe Kicks

Important:

Cove molding or toe kick is required to complete installation of base cabinets, storage cabinets, and lockers. If using cove molding in lieu of toe kicks, cove molding must be sourced locally prior to installation.

Note:

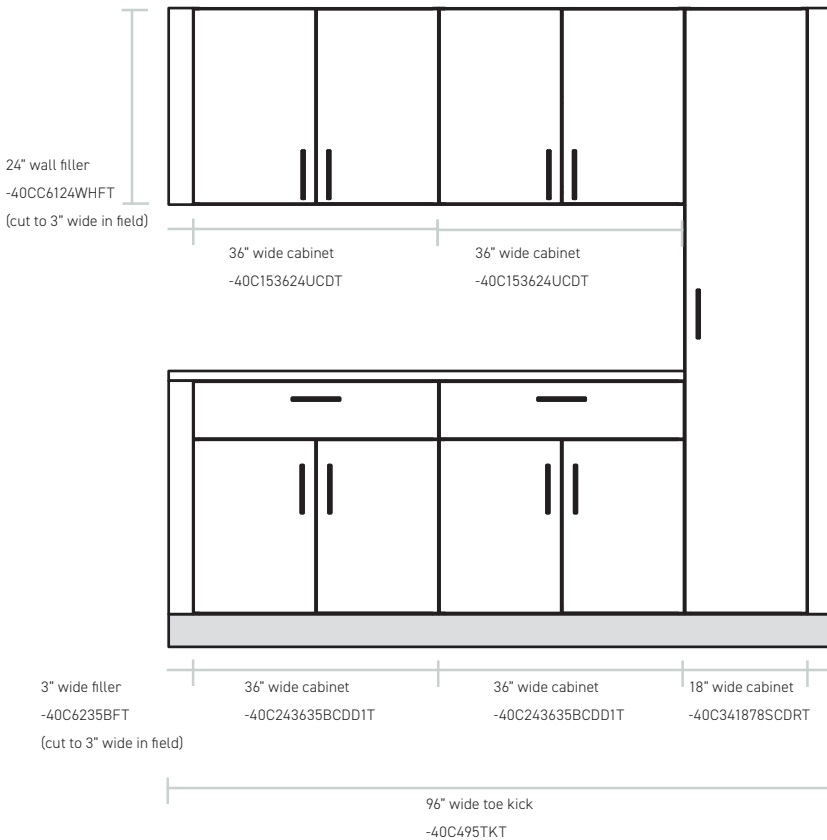
Grain direction runs horizontal.

Planning Tips:

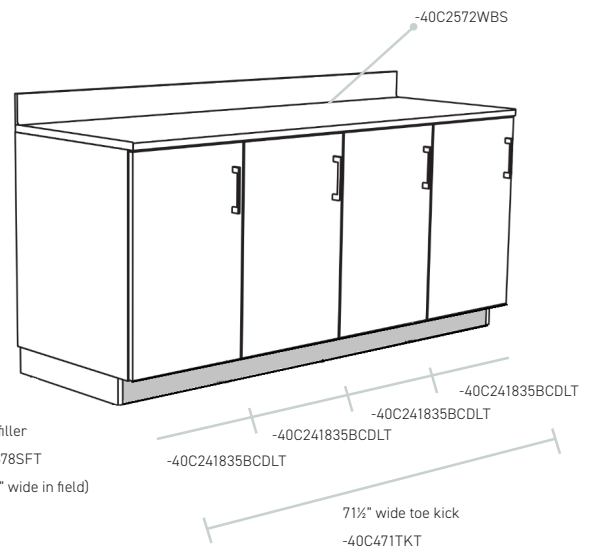
- One toe kick can span multiple cabinets.
- Verify toe kick widths based on application.
 - See examples below
- Can be field scribed as needed. Cut edges should be sealed in the field.
 - See assembly instructions for details.
- Not to be used on the sides of cabinets as a filler.
- Confirm any necessary field cuts are noted on drawings.

Toe Kick Width Calculation Examples

Wall to wall example: 3" filler (field cut) + 36" cabinet + 18" storage + 3" filler (field cut) = 96" wide toe kick



Exposed sides example: 36" cabinet + 36" cabinet - 1/2" left inset - 1/2" right inset = 71 1/2" wide toe kick



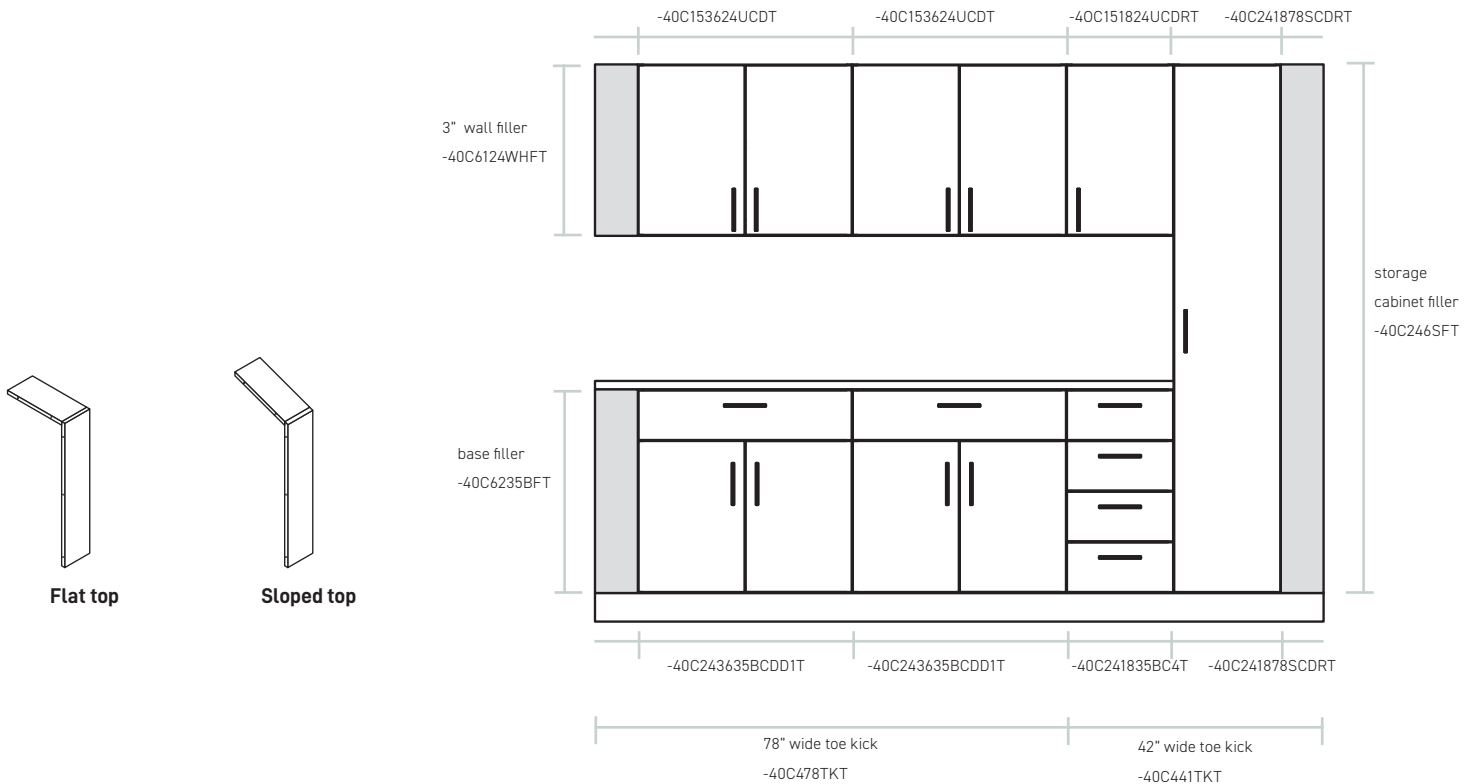
Forge Filler Panels

Architectural walls may have inconsistencies, even in new builds. Installing a pre-made component in an environment with imperfections requires adaptability in the field.

Fillers accommodate for architectural variance. Fillers are available to match all cabinet types and heights. They are available in 6" width and may be field cut to achieve the best fit.

Planning Tips:

- Verify worksurface and toe kick widths accommodate fillers, if applicable.
- Recommend minimum 2" filler when door cabinet is next to wall.
- Fillers are required when drawer cabinet is next to wall (2" minimum).
- Minimum filler width is 1-1/8" to accommodate mounting hardware.
- Confirm any necessary field cuts are noted on drawings.
- Corner fillers are available.
 - See page 13 for more details.



Wall Panels

Laminate wall panels offer a versatile solution for interior design, providing the flexibility to either complement or contrast with cabinets. Additionally, the durability of laminate wall panels may protect walls in high-traffic areas.

Wall panels are 3/8" thick with 5mm edge banding. Wall panels come in different widths and heights, offering flexibility in design options.

Planning Tips:

- Wall panels have a 1/8" gap between the panel and the wall when installed.
- Mounting brackets are included; hardware and anchors are required but not included.



CORPORATE OFFICE
225 CLAY STREET
JASPER, INDIANA 47546



800.457.4511 **TOLL FREE**
812.482.3204 **OFFICE**
812.482.1548 **FAX**



JSIFURNITURE.COM



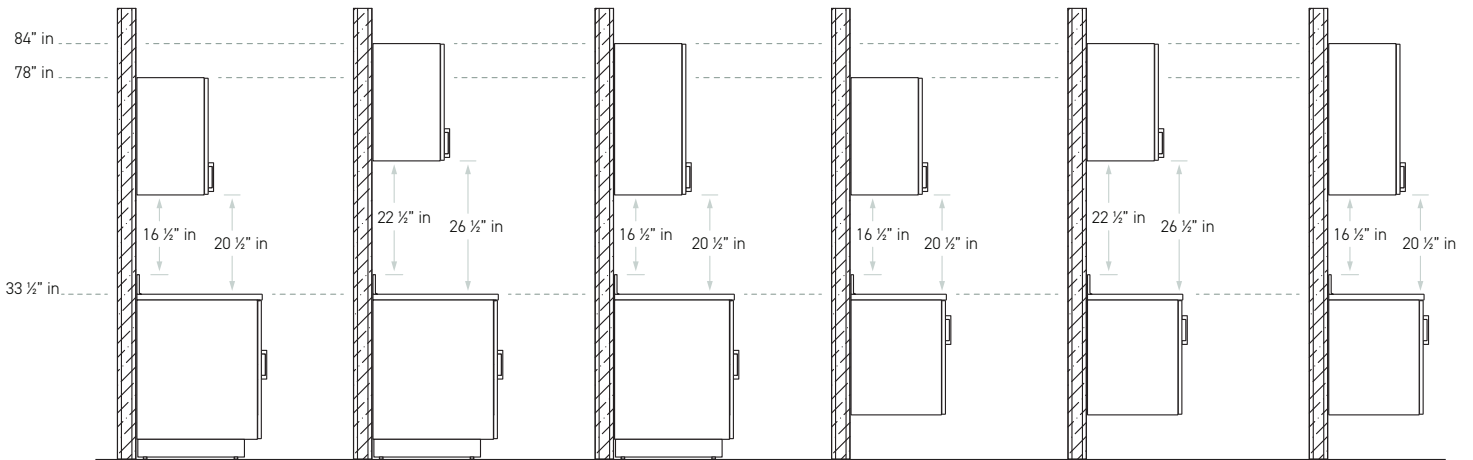
CONTACT JSI

Forge Height Reference

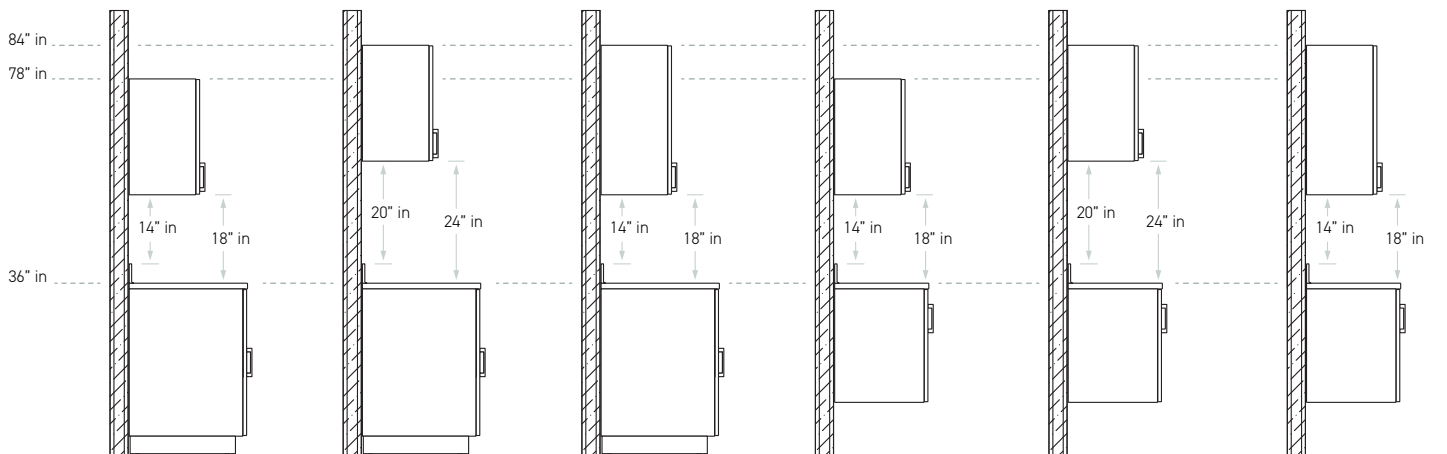
By combining different-sized cabinets and adjusting their placement, you can create a diverse array of configurations tailored to your space and facility requirements.

Note:
1" thick solid surface worksurfaces shown.

ADA Worksurface height 33 1/2"



Worksurface height 36"



CORPORATE OFFICE
225 CLAY STREET
JASPER, INDIANA 47546



800.457.4511 **TOLL FREE**
812.482.3204 **OFFICE**
812.482.1548 **FAX**



JSIFURNITURE.COM



CONTACT JSI

Forge Locks

Forge offers multiple lock options to accommodate specific requirements.

All cabinets are standard as non-locking.

Standard Lock:

Standard locking is available with an upcharge. Lock face is available in black or silver finish. Units are shipped randomly keyed as standard. Key alike units are available upon request for no additional charges, contact our customer service department.

Keyless Lock:

Keyless locking is available at an upcharge. Lock face is available in a black finish. Keyless lock will be orientated vertically on drawer units and horizontally on door. There may be some restrictions for keyless locks on specific units due to space requirements.

Keyless locks come pre-programmed for shared use, but can be field programmed for dedicated use.

Note:

- Waste pullout drawer cabinets do not have a locking option.
- Units with multiple drawers, only the top drawer is locking.
- On Drawer/Door combo units, only the drawer is locking.



CORPORATE OFFICE
225 CLAY STREET
JASPER, INDIANA 47546



800.457.4511 **TOLL FREE**
812.482.3204 **OFFICE**
812.482.1548 **FAX**



JSIFURNITURE.COM



CONTACT JSI

Forge Sloped Top Cabinets

Forge sloped top cabinets offer a top condition that prevents individuals from storing items on top of the cabinet, which different facilities may require.

Forge offers all upper cabinets, storage cabinets, and lockers with sloped top models.

Note:

While nominal storage dimensions of flat top and sloped top models are comparable, overall height of sloped top cabinets will vary based on the depth of unit.

Grain Direction Runs Vertical On Sloped Tops.

Planning Tip:

Upper cabinets with a sloped top can be installed either to match the height of storage cabinets' tops or mounted at a lower position on the wall to align door fronts.



Forge Typicals

For thought starters and design inspiration, planning typicals are available in the Forge Design Tools section on our website.

