

Satisse Order Check List:

1 Model Number

Consider the application and connection method when specifying a model. Select from freestanding & seat linking or glide linking.

2 Upholstery Selection

Please supply the following:

- Fabric vendor/Pattern name/Pattern color
[View all JSI Standard and Graded-In Textiles](#)
- Indicate direction of fabric - Railroaded or Up the Roll
- Please provide illustration, if available

All COM orders must include the following:

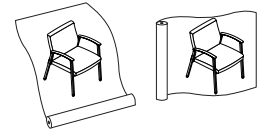
- Vendor's name, pattern name and color
- Sample of the fabric attached to the order
- Model numbers of items for fabric application
- Special application instructions
- Customer and purchase order number

Ship prepaid COM material to:

JSI
Attn: COM Department
201 East Martin Street
Receiving B, Dock 71
Orleans, IN 47452

Application of fabric:

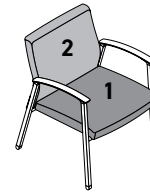
Railroaded Up the Roll



All COM orders will ship at standard lead time from receipt of COM except for orders requiring special custom matched finishes.

Upholstery Application

Satisse offers the ability to be specified with multiply upholsteries to create a unique look. Both upholstery styles are presented in the price list and eTools. Models not ending in a _M will be upholstered in the single upholstery for the complete unit. Models ending with a _M designate multiple upholstery zones will be specified (ex: 20SG1_M) To calculate pricing, add base price + zone 1 upcharge + zone 2 upcharge.



Zone 1 = Seat and Lower Back
Zone 2 = Upper Back

3 Moisture Barrier

- Offers further protection from fluids
- NMB No Moisture Barrier
- MB1 Moisture Barrier Seat Only
- MB2 Moisturer Barrier Seat & Back

4 Arm Caps

Freestanding & Seat Linking chairs are available in narrow and wide arm width models.

20SG1

Guest Chair with Narrow Arms
1 3/4" arm width

20SGWA1

Guest Chair with Wide Arms
2 1/2" width at center tapers to 2" front and back

Glide linking models are available in narrow width arms only.

Arm Caps are available in four different materials:

Polyurethane (PAC) - standard

- MBK Matte Black
- SGU Stone Grey

Solid Surface (SAC)

- DWH Designer White

3D Laminate (3LAC)

- BEL Belair
- FLO Florence Walnut
- PIL Pilsner
- PIN Pinnacle Walnut

Wood (WAC)

- | | | |
|---------------|---------------------|--------------------|
| BAR Barrel | FLN Flint | RAV Raven |
| BRK Brickdust | FLO Florence Walnut | RYE Rye |
| BUF Buff | LOF Loft | SAB Sable |
| CSK Cask | MES Mesa | SAD Saddle |
| CND Cinder | MIN Mineral | SIE Sienna |
| CLY Clay | MCH Mocha | TRF Truffle |
| EGR Egret | OBK Outback | UMB Umber |
| FAW Fawn | PIL Pilsner | VAL Valley |
| FLX Flax | PIN Pinnacle Walnut | WAL Walnut Heights |



Satisse Order Check List (continued):

5 Metal Frame Finish

CLA Classic

ABZ Aged Bronze	SBZ Soft Bronze
ASL Arctic Silver	SNK Soft Nickel
GLD Gold	
MBK Matte Black	
PEW Pewter	

DSG Designer

TBF Toffee Brown	SPR Spiced Raisin	EMC Emerald City	CDU Copper Dust
CAB Cashmere Beige	CAP Candy Apple	MWH Midnight Whisper	SPP Sparkling Peach
SMK Stormy Sky	GOH Golden Honey	BLJ Blue Jean	EBL Electric Blue
DST Desert Stone	MUS Mustard Seed	SPA Space Cadet	
ANL Antique Linen	OLV Olive Fog	DUP Dusty Petal	
POW Porcelain White	EVP Evergreen Pine	VMA Vintage Mahogany	

6 Glides

The style of glides offered on Satisse are dependent upon the model or connection method selected.

Freestanding & Seat Linking

G10	G15
Standard Glide	Leveling Glide (Black)

Glide Linking

G20	G25
MagLinx™	BoltLinx

The G15 leveling glide is always black, the other glides are color coordinated to the metal frame finish selected.

Arctic Silver frame finish dictates Arctic Silver glides.

Pewter or Soft Nickel frame finishes dictate Stone Grey glides.

Aged Bronze, Soft Bronze or Matte Black frame finishes dictate Matte Black glides.

Note: Optional MagLinx™ cap can be ordered to cover the exposed end

7 Tables

Coordinating tables are available in seat linking, glide linking and freestanding options.

A. Top Material

TFL/HPL Laminate

ALB Alabaster	MCH Mocha
BEL Belair	OBK Outback
BLK Black	PIL Pilsner
BRK Brickdust	PIN Pinnacle Walnut
BBL Bridal Blanco	SHD Shadow
CSK Cask	SLG Slate Grey
CLY Clay	UMB Umber
DWH Designer White	VAL Valley
EGR Egret	WAL Walnut Heights
FAW Fawn	WEA Weathered Ash
FLN Flint	ZEN Zen Grey
FLO Florence Walnut	
LOF Loft	
MES Mesa	
MIN Mineral	

Essentials Veneer

BRK Brickdust
CSK Cask
FAW Fawn
FLX Flax
FLN Flint
LOF Loft
MES Mesa
MIN Mineral
MCH Mocha
OBK Outback
PIL Pilsner
SIE Sienna
TRF Truffle
UMB Umber
VAL Valley

Artisan Veneer

BAR Barrel
BUF Buff
CIN Cinder
EGR Egret
RAV Raven
SAB Sable
SAD Saddle

3D Laminate

BEL Belair
FLO Florence Walnut
PIL Pilsner
PIN Pinnacle Walnut

Solid Surface

DWH Designer White

A. Metal Frame Finish

See Step 5 Above

C. Glides

See Step 6 Above



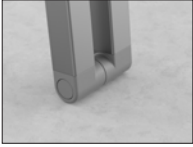
Satisse Product Information

Creating Configuration with Chairs and Tables

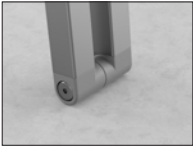
Satisse provides two distinct techniques of creating solutions for public seating needs, in the healthcare and private sector.

Glide Linking

Glide Linking is quick connect/disconnect system linking chairs and tables. When patent-pending MagLinX™ glide is specified there is no need for additional hardware.



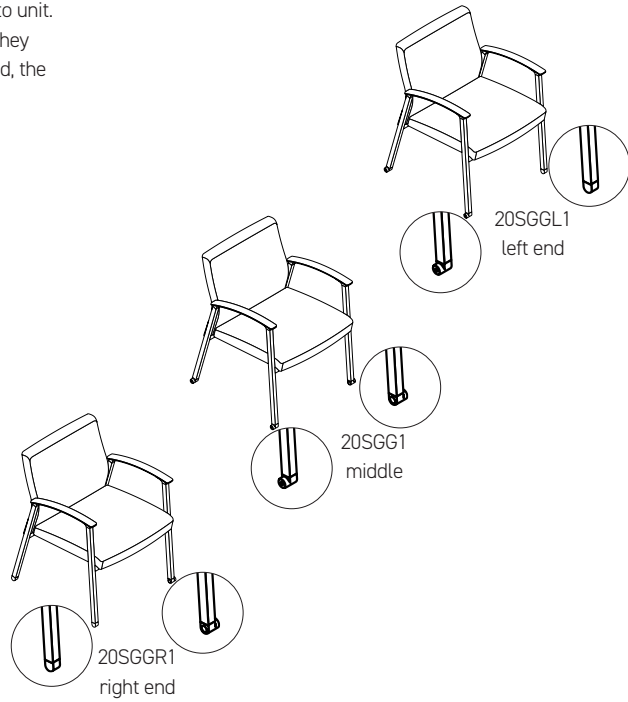
MagLinX™ glides afford a strong connection from unit to unit. Simply align one chair up to a corresponding unit and they snap into place. When the space needs to be rearranged, the units can be quickly pulled apart and reallocated.



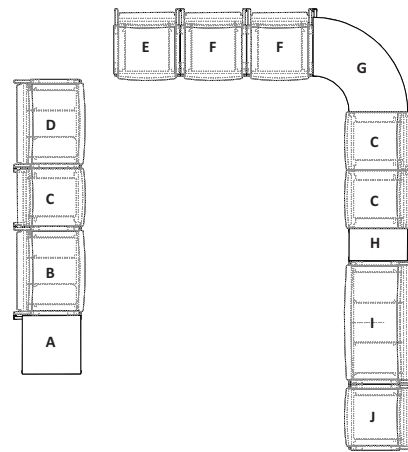
For solutions requiring a more permanent attachment, specify the BoltLinX glide which replaces the magnet with a mechanical fastened through bolt.

Right end and left end chairs and tables are available to finish the end of a configuration with a standard glide.

Glide linking models always face the same direction when linked together.



Below illustrates a combination of models to create possible configurations.



Glide Linking

- A 20TEGR2222T
- B 20SBG1
- C 20SGXAG1
- D 20SBGL1
- E 20SGGR1
- F 20SGG1
- G 20TCG3535T
- H 20TIG12222T
- I 20SGG2
- J 20SGGL1



CORPORATE OFFICE
225 CLAY STREET
JASPER, INDIANA 47546



800.457.4511 TOLL FREE
812.482.3204 OFFICE
812.482.1548 FAX



JSIFURNITURE.COM
[EXPLORE PRODUCT](#)



Contact JSI

Satisse Product Information

Seat Linking

An alternate solution to create a run of chairs is to use the connecting hardware at the seat of freestanding models.



Connecting hardware can be placed between two freestanding chairs, and accomodates seat linking armless, narrow or wide arm models.

Connecting tables come with their own brackets and do not require hardware to be ordered separately.

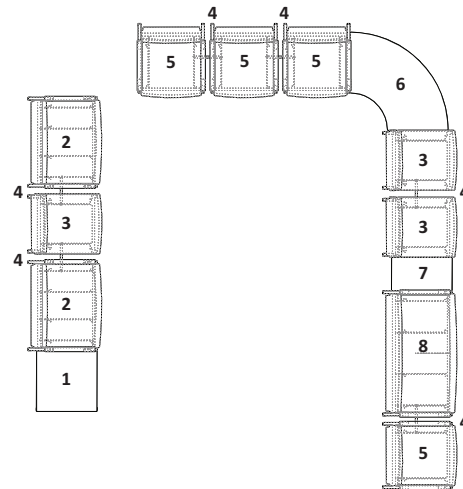


Connecting corner and end tables with supporting legs can be used with all freestanding chairs except easy access.



Connecting inline tables that do not have a support leg can be specified with all freestanding chairs.

Below illustrates a combination of models to create possible configurations. Freestanding chairs that are linked with the additional connecting hardware can face opposite directions.



Seat Linking

- 1 20TE2222T
- 2 20SB1
- 3 20SGXA1
- 4 20SCH Connect Hardware
- 5 20SG1
- 6 20T3535T
- 7 20TI1222T
- 8 20SG2



Satisse Product Information



Satisse frames are fully welded heavy gauge powder coated steel. Available in seven standard finishes.



Polyurethane Armcaps are standard and provide durability, comfort and ease of cleanability. Available in two colors Stone Grey and Matte Black.



Easy Replacement Parts ensure easy part replacement if damaged. This includes chair arms, seat and back.



3D Laminate Armcaps are available in four woodgrain finishes and provide an alternate to real wood for ease of cleanability.



Clean Out All Satisse seating models come with a clean out feature, allowing debris, dirt and liquids to easily fall onto the floor for effortless maintenance.



Solid Surface Armcaps are available in Designer White providing enhanced durability and cleanability.



Wall Saver Satisse chair leg design prevents wall damage by keeping the back away from the wall.



Solid Wood Armcaps are maple and available in a variety of finishes.

Arm Widths



narrow arm

- glide linking chairs
- available in freestanding and seat linking chairs



wide arm

- lounge
- available in freestanding and seat linking chairs

Satisse Arms are available in a narrow arm or wide arm based on model type. The pommel arm grip is subtly curved to support visitors as they shift to stand.



CORPORATE OFFICE
225 CLAY STREET
JASPER, INDIANA 47546



800.457.4511 TOLL FREE
812.482.3204 OFFICE
812.482.1548 FAX



JSIFURNITURE.COM
[EXPLORE PRODUCT](#)



Contact JSI

Satisse Product Information

linking options



glide linking chairs

- MagLinx™ or BoltLinx glides
- narrow arm models only



seat linking chairs

- connecting hardware joins freestanding guest chairs
- standard or leveling glides
- narrow or wide arm models

Satisse offers two methods to link or gang seating and tables together. Glide linking models link with a patent-pending MagLinx™ connectors held with a strong magnet for toolless installation. A BoltLinx option is also available.

Seat Linking are freestanding models that can be joined in the field with connecting hardware sold separately. Tables ship with connecting hardware.



standard

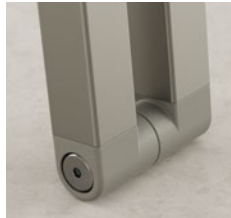


leveling

Glides for freestanding and seat linking chairs and tables are available with a standard glide color coordinated to the frame finish or a black leveling glide at an upcharge.

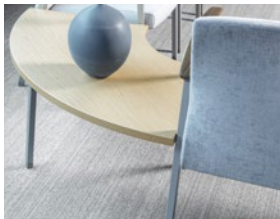


MagLinx™



BoltLinx

Glide Linking models for chairs and tables are available with a standard glide color coordinated to match the frame finish.



Coordinating Tables are available in seat linking, glide linking and freestanding options. Finish options include laminate, 3D laminate, veneer and solid surface.

Multiple Upholstery models allow a combination of two upholstery covers on the same unit. See price list for upcharges per model.

Moisture Barrier option is available when a fabric does not provide a fluid barrier or when extra protection is desired. It helps prevent the passage of liquids to the inside of upholstered components.

Weight Capacities are as follows:

400 lb. per seat. Exceeds BIFMA Seating Drop Test to 500 lbs.
600 lb. Bariatric. Exceeds BIFMA Seating Drop Test to 750 lbs.

Testing

ANSI/BIFMA X5.41 (400 lb)-2021 - Large Occupant Public and Lounge Seating Tests¹
ANSI/BIFMA X5.41 (600 lb)-2021 - Large Occupant Public and Lounge Seating Tests²

Tested for 24-hour duty cycle

¹ Meets all criteria, except the minimum seat width

² Limited to Bariatric models only



CORPORATE OFFICE
225 CLAY STREET
JASPER, INDIANA 47546



800.457.4511 TOLL FREE
812.482.3204 OFFICE
812.482.1548 FAX



JSIFURNITURE.COM
[EXPLORE PRODUCT](#)



Contact JSI