

Legacy Tile

Product Type	Carpet Tile	
Collection	Coexist	
Style Number	5T701	
Construction	Multi-Level Pattern Loop	
Fiber	Ecosolution Q100® Nylon	
Dye Method	100% Solution Dyed	
Primary Backing	Synthetic	
Secondary Backing	Ecworx® Bio Tile	
Protective Treatments	SSP® Shaw Soil Protection	
Recommended Adhesive	3000 1 Gallon, 3000 4 Gallon, 3800, 4151, 4252, 5000 1 Gallon, 5000 4 Gallon, LokDots or LokWorx Tabs	
	u.s.	metric
Product Size	9 in x 36 in	23 cm x 91 cm
Gauge	1/10 in	39.4 per 10 cm
Stitches	8.0 per in	32.0 per 10 cm
Finished Pile Thickness	0.103 in	2.62 mm
Average Density	8388 oz/yd³	0.31 g/cm³
Total Thickness	0.265 in	6.73 mm
Tufted Weight	24 oz/yd²	813.7 g/m²

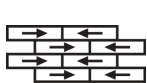
Packaging

Area per Carton	5 yd² 45 ft²	4.18 m²
Pieces per Carton	20 pcs	
Weight per Carton	28.65 lbs	13 kg
Area per Pallet	160 yd²	133.78 m²
Boxes per Pallet	32 boxes	

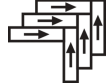
Recommended Installation Method



Ashlar



Brick



Herringbone



Monolithic



Stagger

Performance + Testing

Radiant Panel	Class I
NBS Smoke	Less Than 450
Electrostatic Propensity	Less Than 3.5 kv
CRI Green Label Plus (GLP)	GLP9968
Pill Test	Pass*
ADA Compliance	>0.6, meets the recommended static coefficient of friction for ADA walking surfaces and accessible routes***
Wear Rating (ASTM D5252)	Severe

Test Reports may be included or listed by the manufacturing/inventory style number as opposed to the noted selling style number.

Warranties

[Lifetime Commercial Limited Warranty](#)

Coordinating Products

Carpet Tile: **Imperfect Path Tile, Present Moment Tile, Ceremony Tile, Reverence Tile, Flow Of Time Tile, Simplicity Tile**

Diversity & Inclusion

We promote supplier participation that is reflective of Shaw Industries' diverse customer base and local community. We believe having a strong Supplier Diversity Program is strategic for bringing more innovation to our businesses and opening new markets for growth.

Material Health & Environmental Certifications

Certifications below apply exclusively to the carpet tile rug itself and not the LokWorx Tabs adhesive

Health & Wellbeing

Material & Ingredient Transparency

Health Product Declaration (HPD) | 1,000 ppm Disclosure
Living Building Challenge (LBC) | Free of Red List Chemicals
Declare | LBC Compliant
NSF 140 | Gold

Indoor Air Quality

CRI Green Label Plus (GLP) | GLP9968

Climate Impact

Environmental Product Declaration (EPD)

3rd Party Certified in Accordance with ISO14044, ISO14025 & EN15804

Embodied Carbon (Cradle to Gate)

2.44 kg CO₂/m²

Life-Cycle Carbon Emissions

Carbon Neutral

total recycled content

58% (Pre-Consumer 58% | Post-Consumer 0%)

product packaging

100% Recyclable

Global Product Assessment

GSA | Approved

CE Marking (EN 14041) | 3rd Party Certified

Re[turn] Reclamation Program* | Through Our Environmental Guarantee, Shaw Pledges to Transport And Recycle Any Ecoworx Carpet.

country of origin | USA

Works With WELL | WELL V2 Contribution Credit

X11 Long Term Emissions Control
 Part 2: Flooring Optimization

Green Label Plus Certification: GLP9968

Leed v4 Contribution Credits

MR Credit: Building Product Disclosure and Optimization
 Environmental Product Declarations - Option 1: Environmental Product Declaration (EPD)

3rd Party Certified in Accordance with ISO14044, ISO14025 & EN15804

MR Credit: Building Product Disclosure and Optimization
 Material Ingredients - Option 1: Material Ingredient Reporting

HPD (Version 2.3)

MR Credit: Building Product Disclosure and Optimization
 Sourcing of Raw Materials - Option 2: Leadership Extraction Practices

Environmental Guarantee: Re[turn] Reclamation Program* | Through Our Environmental Guarantee, Shaw Pledges to Transport And Recycle Any Ecoworx Carpet.

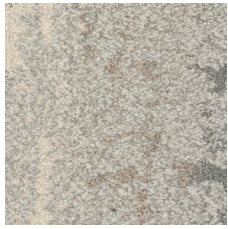
EQ Credit: Low Emitting Materials
 Option 1: Product Category Calculations

Green Label Plus Certification: GLP9968

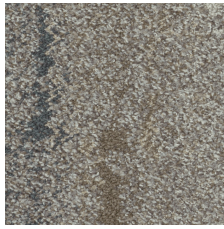
MR Credit: Interiors Life-Cycle Impact Reduction
 Option 3: Design for Flexibility

Ecoworx Bio Tile with Lokdots Installation System

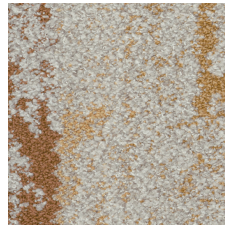
Available Colorways



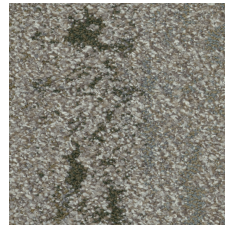
Memory 01100
LRV 37.6 | L* 67.72



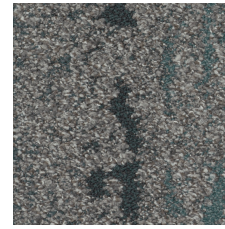
Peaceful 01111
LRV 24.3 | L* 56.37



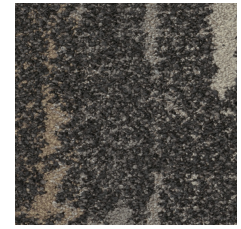
Spring Memory 01210
LRV 36.0 | L* 66.53



Peaceful Garden 01375
LRV 19.6 | L* 51.37



Quiet Rain 01485
LRV 16.2 | L* 47.27



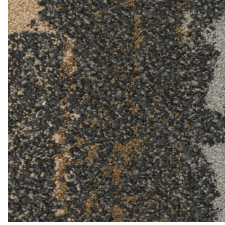
Raku 01500
LRV 7.3 | L* 32.52



Quiet 01518
LRV 17.9 | L* 49.33



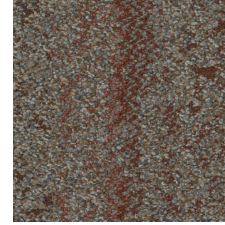
Mountain 01580
LRV 13.6 | L* 43.63



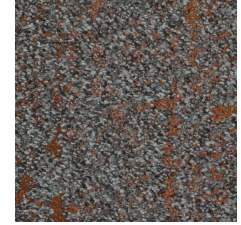
Raku Ember 01755
LRV 6.1 | L* 29.63



Haiku 01762
LRV 12.7 | L* 42.36



Autumn Haiku 01850
LRV 11.8 | L* 40.82



Morning Mountain 01866
LRV 10.8 | L* 39.21

Additional Information

* To learn more about the recyclability of our products and our re[TURN], please visit shawcontract.com/sustainability.

**Meets or exceeds all local and national regulations in country of manufacture.

[Installation Guidelines](#)

[Maintenance Guidelines](#)

Specifications are subject to nominal manufacturing variance. Material supply and/or manufacturing processes may necessitate changes without notice.

This product is an exclusive design and may not be duplicated in any manner. Use of this design in the creation of another product design is also strictly prohibited.

Visit shawcontract.com/testing for more information.



Declare.



PVC-Free

Corporate Headquarters +1 800 257 7429 | +1 706 532 7984 | Atlanta +1 404 853 7429 | Bengaluru +91 80 6773 0202 | Beijing +86 10 6568 588 | Chicago +1 312 467 1331 | Dubai +971 4 584 6956 | Hong Kong +852 2623 0371 | London +44 207 961 4120 | Los Angeles +1 800 233 1614 | Melbourne +61 3 9939 8543 | Mexico City +55 5010 7600 | Mumbai +91 22 6284 5050 | Nantong +86 400 800 7429 | New York +1 212 953 7429 | Paris +33 (0) 1 81 22 44 39 | San Francisco +1 415 955 1920 | Shanghai +86 21 3338 4000 | Singapore +65 6733 1811 | Sydney +61 800 556 302

© 2026 Shaw Industries Group, Inc., a Berkshire Hathaway Company
May 12, 2026

3 of 3