

Braided Broadloom

| | | |
|-----------------------------|-------------------------------------|-------------------------------|
| Product Type | Broadloom | |
| Collection | Cultura | |
| Style Number | 5A381 | |
| Construction | Multi-Level Pattern Cut/Loop | |
| Fiber | Ecosolution Q® Nylon | |
| Dye Method | 100% Solution Dyed | |
| Primary Backing | Synthetic | |
| Secondary Backing | Ultraloc® | |
| Protective Treatments | SSP® Shaw Soil Protection | |
| Approved Spaces | Commercial Spaces | |
| Recommended Adhesive | 1000 or 3800 | |
| | u.s. | metric |
| Product Size | 12 ft | 3.66 m |
| Gauge | 1/10 in | 39.4 per 10 cm |
| Stitches | 10.0 per in | 39.0 per 10 cm |
| Finished Pile Thickness | 0.198 in | 5.03 mm |
| Average Density | 5818 oz/yd³ | 0.215 g/cm³ |
| Total Thickness | 0.392 in | 9.96 mm |
| Tufted Weight | 32 oz/yd² | 1085 g/m² |
| Installation Pattern Repeat | 36 in x 48 in | 91.44 cm x 121.9 cm |



Recommended Installation Method

Direct Glue, Double Glue, Stretch-In

Performance + Testing

| | |
|----------------------------|--|
| Pill Test | Pass |
| Radiant Panel | Class I |
| NBS Smoke | Less Than 450 |
| Electrostatic Propensity | Less Than 3.5 kv |
| CRI Green Label Plus (GLP) | GLP2271 |
| ADA Compliance | >0.6, meets the recommended static coefficient of friction for ADA walking surfaces and accessible routes*** |
| Wear Rating (ASTM D5252) | Heavy |

Test Reports may be included or listed by the manufacturing/inventory style number as opposed to the noted selling style number.

Warranties

[Lifetime Commercial Limited Warranty](#)

Diversity & Inclusion

We promote supplier participation that is reflective of Shaw Industries' diverse customer base and local community. We believe having a strong Supplier Diversity Program is strategic for bringing more innovation to our businesses and opening new markets for growth.

Coordinating Products

Lvt: **In Unison 5.0, Crossing Paths 5.0, In Unison 2.5, Crossing Paths 2.5**

Carpet Tile: **Alban Tile, Hand Woven Tile, Local Tile, Sierra Tile, Casa Tile, Cross Weave Tile**

Broadloom: **Valle Broadloom**

Material Health & Environmental Certifications

Health & Wellbeing

Material & Ingredient Transparency

Cradle to Cradle Certified® | Silver Level (Version 3.1)
Health Product Declaration (HPD) | 1,000 ppm Disclosure
NSF 140 | Gold

Indoor Air Quality

CRI Green Label Plus (GLP) | GLP2271

Climate Impact

Environmental Product Declaration (EPD)

3rd Party Certified in Accordance with ISO14044, ISO14025 & EN15804

Embodied Carbon (Cradle to Gate)

11.6 kg CO₂/m²

total recycled content

<1% (Pre-Consumer <1% | Post-Consumer 0%)

product packaging

100% Recyclable

Global Product Assessment

CE Marking (EN 14041) | 3rd Party Certified

Re[turn] Reclamation Program* | Pickup & Delivery Available

country of origin | USA

Works With WELL | WELL V2 Contribution Credit

X08 Hazardous Material Reduction

Part 1: Limit Hazardous Materials Optimization

C2C Silver Level (Version 3.1)

X10 Volatile Compound Reduction

Part 1 (A): Manage Volatile Organic Compounds (VOCs) Optimization

C2C Silver Level (Version 3.1)

X11 Long Term Emissions Control

Part 2: Flooring Optimization

Green Label Plus Certification GLP2271

X13 Enhanced Material Precaution

Part 1: Select Optimized Materials Optimization

C2C Silver Level (Version 3.1)

X14 Material Transparency

Part 1: Promote Ingredient Disclosure Optimization

C2C Silver Level (Version 3.1)

Leed v4 Contribution Credits

MR Credit: Building Product Disclosure and Optimization

Environmental Product Declarations - Option 1: Environmental Product Declaration (EPD)

3rd Party Certified in Accordance with ISO14044, ISO14025 & EN15804

MR Credit: Building Product Disclosure and Optimization

Material Ingredients - Option 1: Material Ingredient Reporting

C2C Silver Level (Version 3.1)

MR Credit: Building Product Disclosure and Optimization

Material Ingredients - Option 2: Material Ingredient Optimization

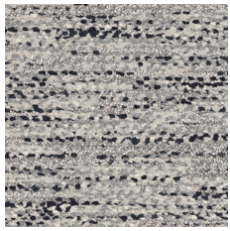
C2C Silver Level (Version 3.1)

EQ Credit: Low Emitting Materials

Option 1: Product Category Calculations

Green Label Plus Certification: GLP2271

Available Colorways



Cobblestone 81100



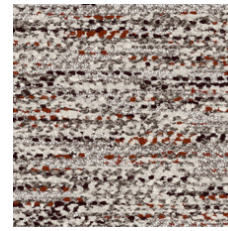
Maiz 81111



Vibrant Mole 81500



Tejate 81518



Vibrant Native 81865

Additional Information

* To learn more about the recyclability of our products and our Environmental Guarantee, please visit shawcontract.com/sustainability.

**Meets or exceeds all local and national regulations in country of manufacture. (Manufactured in an ISO 9001 & ISO 14001 certified facility or equivalent)

[Installation Guidelines](#)

[Maintenance Guidelines](#)

Specifications are subject to nominal manufacturing variance. Material supply and/or manufacturing processes may necessitate changes without notice.

This product is an exclusive design and may not be duplicated in any manner. Use of this design in the creation of another product design is also strictly prohibited.

Visit shawcontract.com/testing for more information.



PVC-Free