

# ShawContract®

## Herringbone

Product Type	<b>Broadloom</b>	
Collection	<b>Classics</b>	
Style Number	<b>5B101</b>	
Construction	<b>Multi-Level Pattern Cut/Loop</b>	
Fiber	<b>Nylon</b>	
Dye Method	<b>100% Solution Dyed</b>	
Primary Backing	<b>Synthetic</b>	
Secondary Backing	<b>Classicbac®</b>	
Protective Treatments	<b>SSP® Shaw Soil Protection</b>	
Recommended Adhesive	<b>1000 Broadloom 4 Gallon, Shaw 1200 or 3800 Indoor Outdoor Broadloom 4 Gallon</b>	
	u.s.	metric
Product Size	<b>12 ft</b>	<b>3.66 m</b>
Gauge	<b>1/10 in</b>	<b>39.4 per 10 cm</b>
Stitches	<b>12.0 per in</b>	<b>47.0 per 10 cm</b>
Finished Pile Thickness	<b>0.169 in</b>	<b>4.29 mm</b>
Average Density	<b>6817 oz/yd<sup>3</sup></b>	<b>0.252 g/cm<sup>3</sup></b>
Kilotex		<b>11.19</b>
Total Thickness	<b>0.310 in</b>	<b>7.87 mm</b>
Tufted Weight	<b>32 oz/yd<sup>2</sup></b>	<b>1085 g/m<sup>2</sup></b>
Installation Pattern Repeat	<b>6" w x 1.2" l</b>	<b>15.24 cm w x 3.05 cm l</b>



## Recommended Installation Method

Direct Glue, Double Glue, Stretch-In

Product should be installed in rooms only applications. Single drop in width is required.

When installing in hybrid locations with carpet and resilient, direct glue with LokSeam is recommended.

## Performance + Testing

Pill Test	<b>Pass</b>
Radiant Panel	<b>Class I</b>
NBS Smoke	<b>Less Than 450</b>
Electrostatic Propensity	<b>Less Than 3.5 kv</b>
CRI Green Label Plus (GLP)	<b>GLP8472</b>
ADA Compliance	<b>&gt;0.6, meets the recommended static coefficient of friction for ADA walking surfaces and accessible routes***</b>

Test Reports may be included or listed by the manufacturing/inventory style number as opposed to the noted selling style number.

## Warranties

[Broadloom Commercial Limited Warranty for Housing](#)

## Coordinating Products

---

Broadloom: **Squares, Stripes**

## Diversity & Inclusion

---

We believe all humans are equal. Individually and collectively, we need to proactively create and promote opportunities that give everybody an equal footing in life. We nurture an environment where every voice and perspective can be heard, and proactively promote accessibility and inclusivity inside our network and beyond. One proof point is our ability to meet the criteria of the Social Fairness pillar of the Cradle to Cradle Product Standard. At Shaw Industries, we promote supplier participation that is reflective of Shaw's diverse customer base and local community. More than 42% of our spend\*\*\*\*\* is with small and diverse businesses. We believe having a strong Supplier Diversity Program is strategic for bringing more innovation to our businesses and opening new markets for growth.

## Material Health & Environmental Certifications

---

### Health & Wellbeing

Material Ingredient Transparency

**Cradle to Cradle Certified® | Silver Level (Version 3.1)**  
**NSF 140 | Gold**

Indoor Air Quality

**CRI Green Label Plus (GLP) | GLP8472**

### Climate Impact

Environmental Product Declaration (EPD)

**3rd Party Certified in Accordance with ISO14044, ISO14025 & EN15804**

Total Recycled Content

**<1% (Pre-Consumer <1% | Post-Consumer 0%)**

Product Packaging

**100% Recyclable**

### Global Product Assessment

**CE Marking (EN 14041) | 3rd Party Certified**

**Environmental Guarantee\* | Re[turn] Reclamation Program\* | Pickup & Delivery Available**

**Country of Origin\*\* | USA**

## WELL V2 Contribution Credit

---

X08 Hazardous Material Reduction

**C2C Silver Level (Version 3.1)**

Part 1: Limit Hazardous Materials Optimization

X10 Volatile Compound Reduction

**C2C Silver Level (Version 3.1)**

Part 1 (A): Manage Volatile Organic Compounds (VOCs) Optimization

X11 Long Term Emissions Control

**Green Label Plus Certification | GLP8472**

Part 2: Flooring Optimization

X13 Enhanced Material Precaution

**C2C Silver Level (Version 3.1)**

Part 1: Select Optimized Materials Optimization

X14 Material Transparency

**C2C Silver Level (Version 3.1)**

Part 1: Promote Ingredient Disclosure Optimization

## Leed v4 Contribution Credits

---

MR Credit: Building Product Disclosure and Optimization  
Environmental Product Declarations - Option 1: Environmental Product Declaration (EPD)

**3rd Party Certified in Accordance with ISO14044, ISO14025 & EN15804**

MR Credit: Building Product Disclosure and Optimization  
Material Ingredients - Option 1: Material Ingredient Reporting

**C2C Silver Level (Version 3.1)**

MR Credit: Building Product Disclosure and Optimization  
Material Ingredients - Option 2: Material Ingredient Optimization

**C2C Silver Level (Version 3.1)**

EQ Credit: Low Emitting Materials  
Option 1: Product Category Calculations

**Green Label Plus Certification: GLP8472**

## Available Colorways



Camel Hair 03120  
LRV 15.6 | L\* 46.46



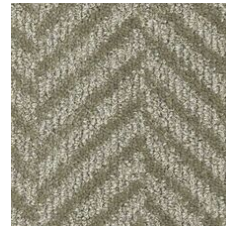
Gilded 03250  
LRV 16.1 | L\* 47.11



Pewter 03500  
LRV 6.9 | L\* 31.68



Mirrored 03525  
LRV 12 | L\* 41.2



Brushed Nickel 03570  
LRV 15.8 | L\* 46.67



Truffle 03700  
LRV 5.3 | L\* 27.54



Mushroom 03750  
LRV 11.4 | L\* 40.3

## Additional Information

\* To learn more about the recyclability of our products and our Environmental Guarantee, please visit [shawcontract.com/sustainability](https://shawcontract.com/sustainability).

\*\*Meets or exceeds all local and national regulations in country of manufacture. (Manufactured in an ISO 9001 & ISO 14001 certified facility or equivalent)

\*\*\*This carpet is manufactured to be ADA compliant, but to be fully ADA compliant, the end-user must ensure the carpet is adhered to the floor and installed as outlined in the ADA standards.

[Installation Guidelines](#)

[Maintenance Guidelines](#)

Specifications are subject to nominal manufacturing variance. Material supply and/or manufacturing processes may necessitate changes without notice.

This product is an exclusive design and may not be duplicated in any manner. Use of this design in the creation of another product design is also strictly prohibited.

Visit [shawcontract.com/testing](https://shawcontract.com/testing) for more information.



**PVC-Free**

Corporate Headquarters +1 800 257 7429 | +1 706 532 7984 | Atlanta +1 404 853 7429 | Bengaluru +91 80 6773 0202 | Beijing +86 10 6568 588 | Chicago +1 312 467 1331 | Dubai +971 4 584 6956 | Hong Kong +852 2623 0371 | Latin America (Miami) +1 305 827 5912 | London +44 207 961 4120 | Los Angeles +1 800 233 1614 | Melbourne +61 3 9939 8543 | Mexico City +55 5010 7600 | Mumbai +91 22 6284 5050 | Nantong +86 400 800 7429 | New York +1 212 953 7429 | Paris +33 (0) 1 81 22 44 39 | San Francisco +1 415 955 1920 | Santiago +562 2431 5000 x550 | São Paulo +55 11 3071 1702 | Shanghai +86 21 3338 4000 | Singapore +65 6733 1811 | Sydney +61 800 556 302