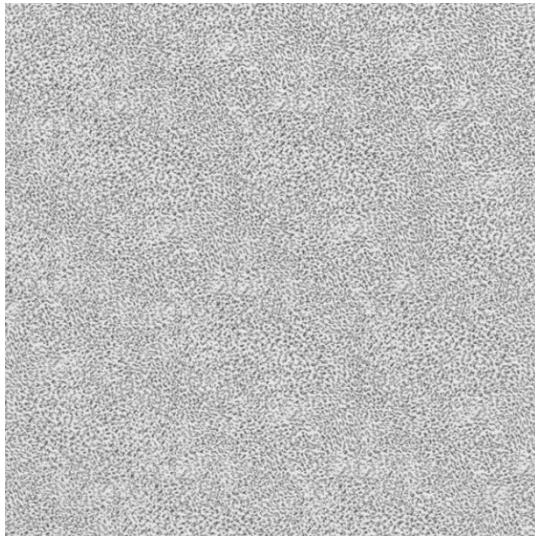




PALLAS

ENVIRONMENTAL DATA SHEET

Rev: 04102026



Nymphaea

27.391

Recycled Content

Materials Upholstery	Total Recycled Content %	Post-Consumer %	Pre-Consumer %	Total Other Materials
Seaqual (Ocean Plastic)	32%	32%	-	-
PCR Polyester	-	-	-	12%
Nylon	-	-	-	17%
Polyester	-	-	-	39%

Recyclable: Yes

Regional Materials: - Country of Origin: US – Distributed through Green Bay, WI 54302 facility

Environmental Attributes:

- [SCS Indoor Advantage™ Gold certified](#)
- [Red List Verified](#)

Cleaning Code: - WS, Bleach Cleanable (10:1) – Clean with mild detergent or shampoo, foam, or dry-cleaning solvent as desired. Do not saturate with liquid

Flammability: - [California TB 117-2013, NFPA 260](#)

PFAS Free: - Yes, must specify on purchase order