



7225.723 Shown

MODEL NUMBER:

- 
7225.713 Bath/Shower Fitting
 I.P.S. Tub Spout. Porcelain Lever handles.
- 
7225.723 Bath/Shower Fitting
 I.P.S. Tub Spout. Metal Cross handles.
- 
7225.733 Bath/Shower Fitting
 I.P.S. Tub Spout. Metal Lever handles.

GENERAL DESCRIPTION:

Cast brass valve body on 8 inch centers. 1/4 turn washerless ceramic disc valve cartridges - reversible for use with either lever or cross handles. 1/2" NPT female threaded inlets and outlets. Showerhead with 2.5gpm/9.5L/min. flow restrictor. Third handle provides positive diverting action between showerhead and tub spout.

PRODUCT FEATURES:

Brass Construction: Durable - Ideal for prolonged contact with water. Provides the finest surface for application of all finishes.

Ceramic Disc Valve Cartridges: Assures a lifetime of drip-free performance.

Increased Rough-in: 42mm to 86mm (1-5/8 to 3-3/8).

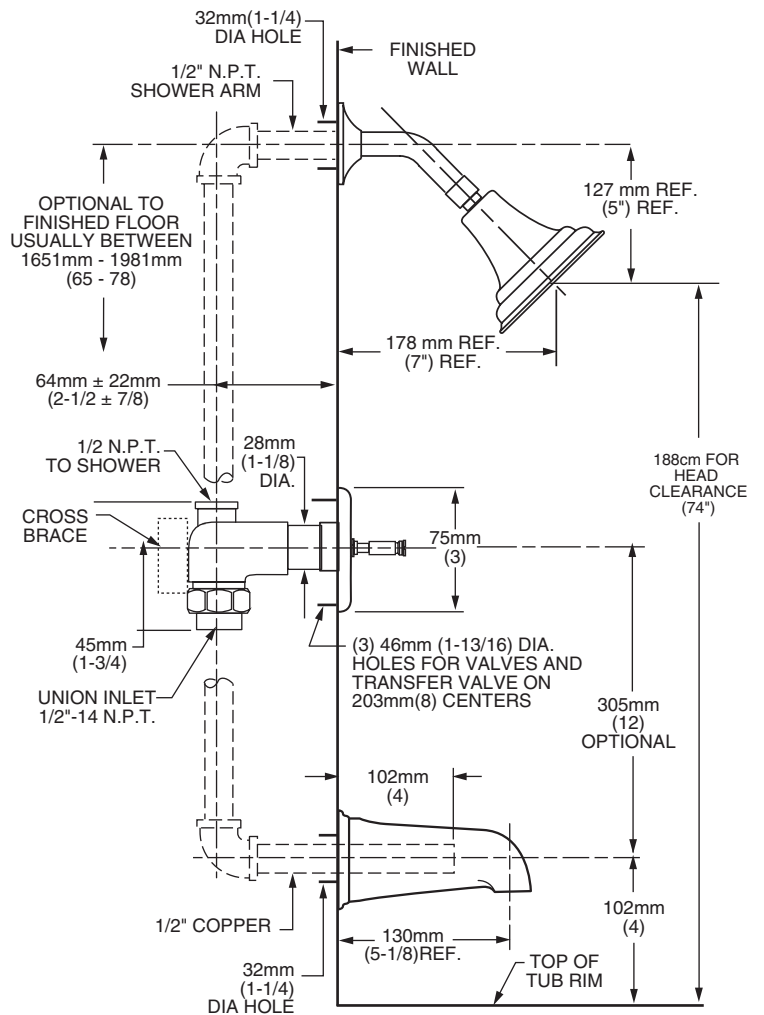
Exclusive Valve Escutcheon Design: 3 piece escutcheon design accommodates deep and shallow rough-ins. Provides water tight seal around valves.

Integral Unions: No soldering required.

Exclusive Handle Alignment System: Allows fine tuning of handle position.

Choice of Finishes: Wide range of durable finishes.

Exclusive Plaster Guard: Plaster guard can be used to test for leaks prior to handle installation.



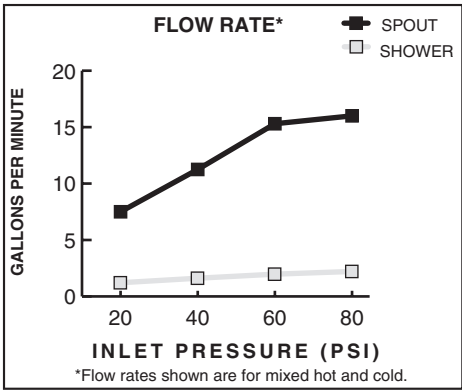
SUGGESTED SPECIFICATION:

Three handle bath/shower fitting shall feature cast brass construction. Shall also feature 1/4 turn washerless ceramic disc valve cartridges that are reversible for use with cross or lever handles. Fitting shall be American Standard Model # 7225.____.____.

CODES AND STANDARDS

These products meet or exceed the following codes and standards:

ASME A112.18.1
CSA B 125



	Product Number	Description	Finish Options						
			Polished Chrome	PVD Blackened Bronze	PVD Polished Brass	PVD Satin/Chrome Mix	PVD Satin Nickel	PVD Satin/Brass Mix	P.Chrome /PVD Brass Mix
			002	068	099	221	295	297	299
	7225.713	Three handle Bath/Shower. Porcelain Lever handles.		N/A		N/A		N/A	N/A
	7225.723	Three handle Bath/Shower. Metal Cross handles.		N/A		N/A		N/A	N/A
	7225.733	Three handle Bath/Shower. Metal Lever handles.							

N/A = NOT AVAILABLE

Meets the American Disabilities Act Guidelines and **ANSI A117.1** Requirements for the physically challenged.