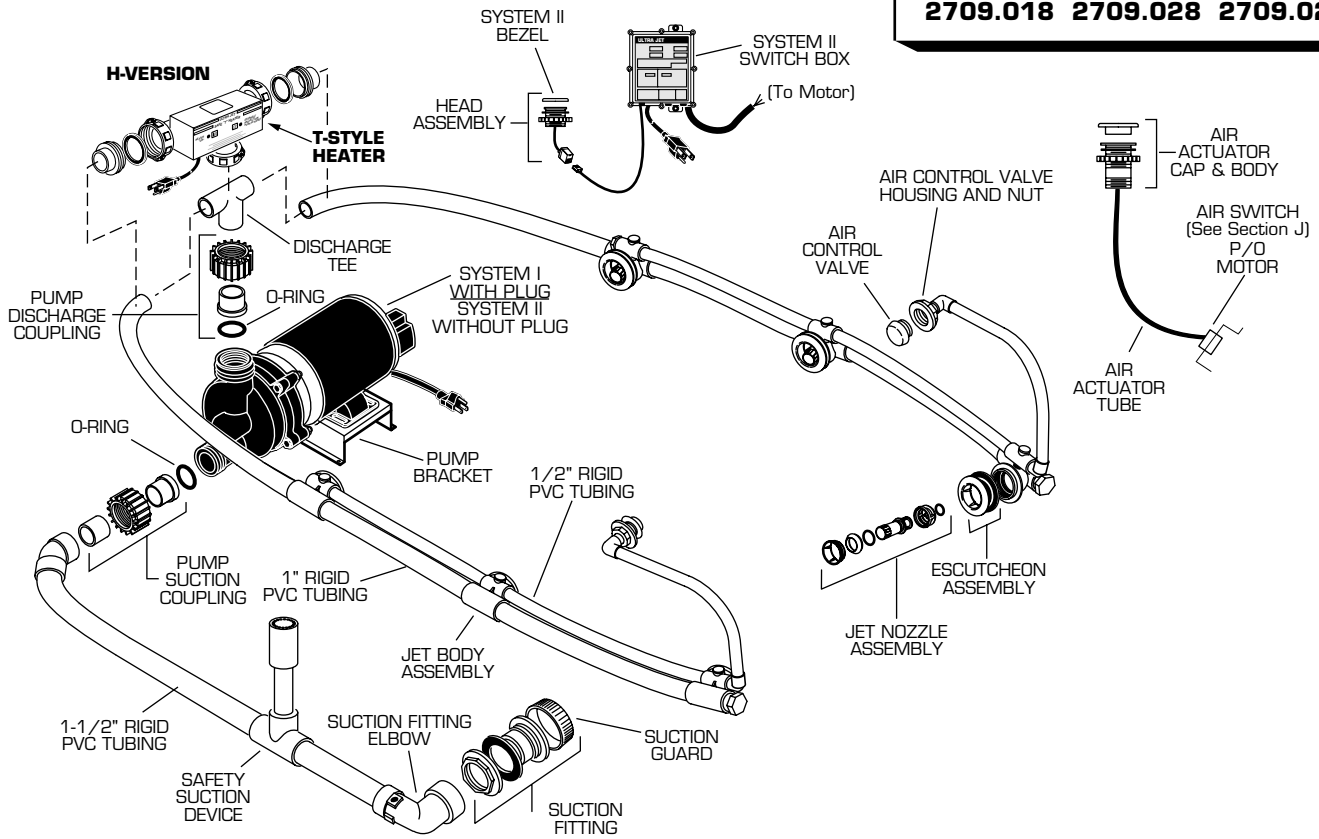


2709.018 2709.028 2709.028H



USABLE ON	DESCRIPTION	PART NUMBER	PKG QTY
ALL MODELS	Pump Suction Coupling	047186-0070A	1
	O-Ring	047187-0070A	1
	Pump Discharge Coupling	047186-0070A	1
	★ Air Control Valve (Plastic)	751676-XXX0A	1
	★ Air Control Valve (Metal)	068916-YYY0A	1
	★ Air Control Valve Housing/Nut	068917-XXX0A	1
	★ Jet Nozzle Assembly \triangle	047587-XXX0A	1
	★ Escutcheon Assembly \square	047588-XXX0A	1
	Jet Body Assembly	047627-0070A	1
	★ Suction Guard	047463-XXX0A	1
	★ Suction Fitting	047550-XXX0A	1
	Suction Fitting Elbow	047546-0070A	1
	Discharge Tee	047438-0070A	1
	Safety Suction Device (8")	752361-0070A	1
	Pump Bracket	047437-0070A	1
SYSTEM I .018	WOW Pump w/Air Switch (1 HP)	752538-0070A	1
	Air Switch (See Section J)	752388-0070A	1
	★ Air Actuator Cap and Body	752439-XXX0A	1
SYSTEM II .028 .028H	Air Actuator Tubing	047602-0070A	3 ft.
	Pump (2 Speed, 1 HP)	752116-0070A	1
	★ Head Assembly \circ	752118-YYY0A	1
	★ System II Bezel \circ	752115-YYY0A	1
	System II Switch Box	752119-0070A	1
	★★ Pump (2 Speed, 2 HP)	752466-0070A	1
.028H	★★ System II Switch Box	752468-0070A	1
	Heater	752356-0070A	1

★★ Used on whirlpools manufactured/modified after June 1998

\circ Available in Chrome, Polished Brass, and Gold.

NOTE: Schedule 40 Rigid PVC Piping available through local plumbing supply outlets.

See Section "J" for Additional Parts and Accessories.

\triangle Removal/installation requires tool part no. 047530-0070A.

\square Removal/installation requires tool part no. 047605-0070A.

★ Replace XXX with Fixture Color Code, YYY with Trim Finish