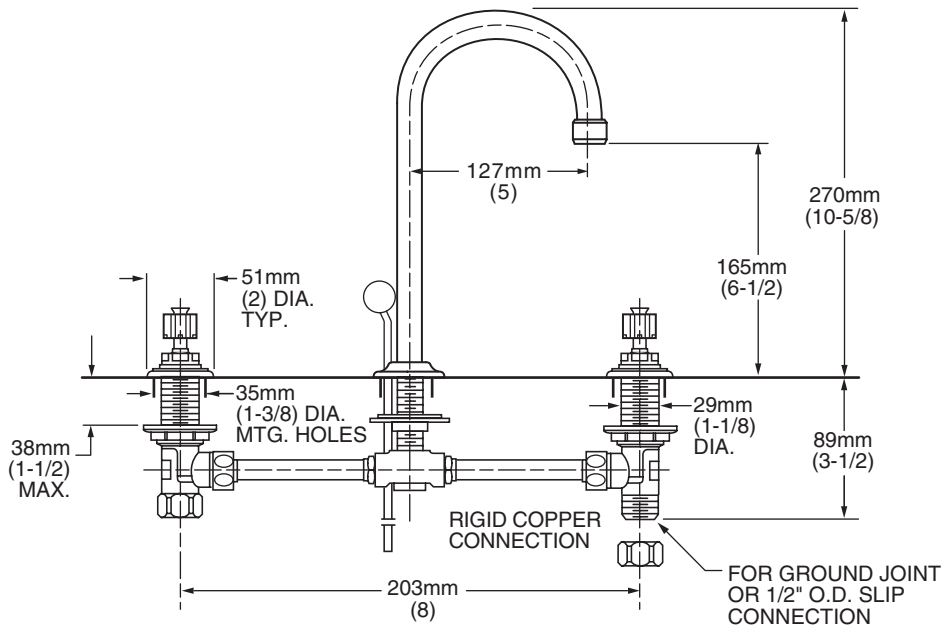


6831.000 Shown.

MODEL NUMBER:

- ❑ **6830.000 Rigid 8" Widespread Lavatory**
 Less drain. Less handles. Rigid copper connection.
- ❑ **6831.000 Rigid 8" Widespread Lavatory**
 Pop-up drain. Less handles. Rigid copper connection.
- ❑ **6832.000 8" Widespread Lavatory**
 Grid strainer drain. Less handles. Rigid copper connection.

Handles must be ordered separately.



GENERAL DESCRIPTION:

Cast brass valve bodies with rigid copper 8" (203mm) connections. Amarilis 1/4 turn washerless ceramic disc valve cartridges - reversible for use with either lever or round handles. Fixed brass spout. One-half inch male inlet shanks with brass coupling nuts and shank nuts. All brass drain body (on applicable models) with 1-1/4" (32mm) tailpiece. 2.2gpm/8.3L/min. maximum flow rate.

PRODUCT FEATURES:

- Brass Construction:** Durable - Excellent in high use applications. Ideal for prolonged contact with water.
- Ceramic Disc Valve Cartridges:** Assures a lifetime of drip-free performance.
- Low Lead:** Meets NSF Standard 61/Section 9 & Prop 65 lead requirements.
- Wide Selection of Styles and Configurations:** Full range of interchangeable fittings for residential and institutional applications.

SUGGESTED SPECIFICATION:

Two handle widespread lavatory faucet shall feature cast brass valve bodies with 8" rigid copper connections. All brass shank nuts and coupling nuts. Shall also feature 1/4 turn washerless ceramic disc valve cartridges that are reversible for use with round or lever handles. Fitting shall be American Standard Model #680_.000.____ and handle kit # 0000.____.____.



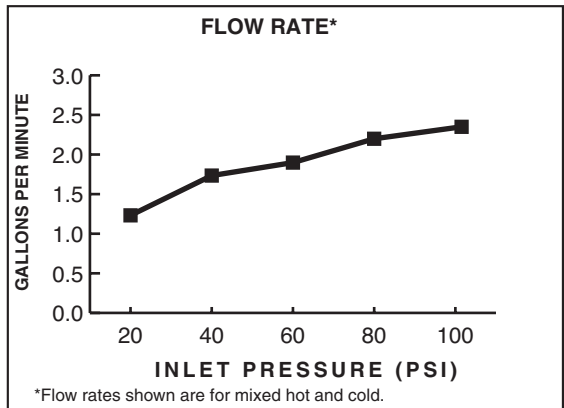
HERITAGE

TWO-HANDLE 8" WIDE SPREAD LAVATORY FAUCET WITH GOOSENECK SPOUT

CODES AND STANDARDS

These products meet or exceed the following codes and standards:

- ASME A112.18.1
- CSA B 125
- NSF 61/Section 9



Product Number	Description	Finish
		Polished Chrome
		002
6830.000	Lavatory Faucet. Less drain. Less handles.	
6831.000	Lavatory Faucet. Pop-up drain. Less handles.	
6832.000	Lavatory Faucet. Grid strainer drain. Less handles.	

Handles must be ordered separately.

To order **Less Handles** - Specify: 4 digit Style number followed by three zeros and 3 digit finish number.
 Example 6832.000.002 = Lavatory faucet with grid strainer drain in Polished Chrome finish.

The above fittings will accept the following Amaris-Series handles.

372H 372V	352H 352V	342H 342V	102H 102V	112H

Meets the American Disabilities Act Guidelines and **ANSI A117.1** Requirements for the physically challenged.