

KOHLER®

Roughing-In

K-1721, K-1723, K-1729 CHESAPEAKE™ WALL-MOUNT LAVATORY

Product Information

Applicable product:	
8" (20.3 cm) centers lavatory	K-1723
4" (10.2 cm) centers lavatory	K-1729
Single-hole lavatory	K-1721
Lavatory is ADA compliant. ADA	

Fixture*:	
Basin area	21" (53.3 cm) x 12" (30.5 cm)
Water depth	4-7/8" (12.4 cm)
Drain hole	1-3/4" (4.4 cm) D.
* Approximate measurements for comparison only.	

Holes	K-1723	K-1729	K-1721
Spout	1-3/8" (3.5 cm) D.	1-1/4" (3.2 cm) D.	1-3/8" (3.5 cm) D.
Faucet	1-3/8" (3.5 cm) D.	1-1/4" (3.2 cm) D.	NA

Recommended accessories:

P-Trap

K-8998

Included component:

Hanger

64839

Installation Notes

Install this product according to the installation guide.

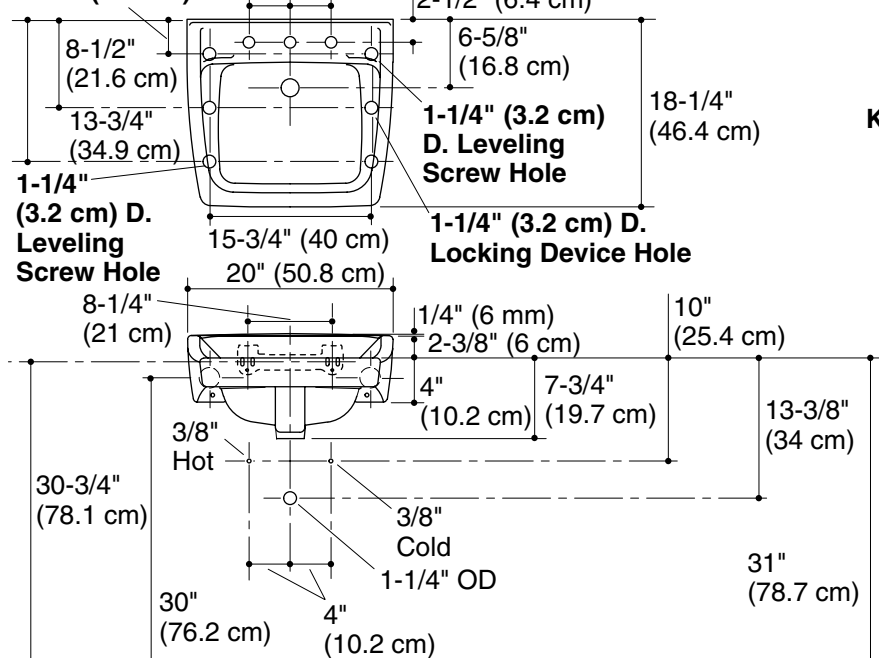
Concealed arm carrier required for commercial installation, **NOT** supplied by Kohler Co.

Supplied hanger not used with concealed arm carrier.

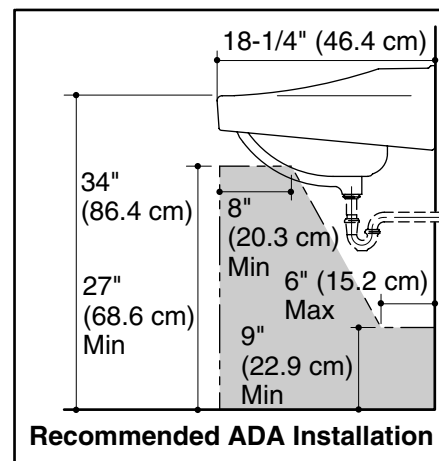
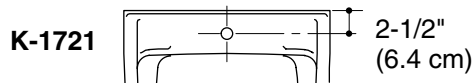
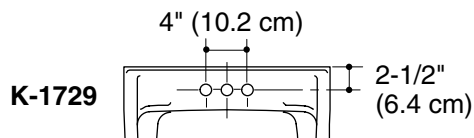
Fixture dimensions are nominal and conform to tolerances in ASME Standard A112.19.2.

Concealed Arm Hole Locations

3-1/4" (8.3 cm)



Standard Installation



Recommended ADA Installation