

### Features

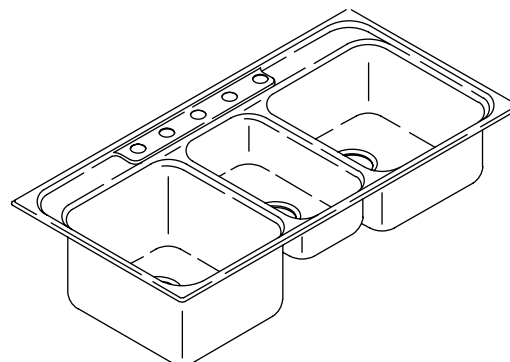
- 18 gauge stainless steel
- Self-rimming
- Triple compartment sink with two equal basins and smaller central disposal basin
- Includes installation hardware
- 5-hole (-5), 3-hole (-3), or single-hole (-1)
- 43-1/4" (109.9 cm) x 22" (55.9 cm)

### Codes/Standards Applicable

Specified model meets or exceeds the following:

- ASME A112.19.3
- IAPMO/UPC

### SELF-RIMMING KITCHEN SINK K-3248



### Colors/Finishes

- NA: None applicable

#### Accessories:

- CP: Polished Chrome
- 0: White
- NA: None applicable
- Other: Refer to Price Book for additional colors/finishes

### Specified Model

Model	Description	Colors/Finishes
K-3248-5	5-hole sink	<input type="checkbox"/> NA
K-3248-3	3-hole sink	<input type="checkbox"/> NA
K-3248-1	Single-hole sink	<input type="checkbox"/> NA

#### Optional Accessories

K-3190	Bottom basin rack (for either large basin)	<input type="checkbox"/> 0 White	<input type="checkbox"/> Other_____
K-3294	Hardwood cutting board (for either large basin)	<input type="checkbox"/> NA	
K-3277	Wire rinse basket (for either large basin)	<input type="checkbox"/> 0 White	<input type="checkbox"/> Other_____
K-8801	Duostrainer® sink strainer	<input type="checkbox"/> CP	<input type="checkbox"/> Other_____

### Product Specification

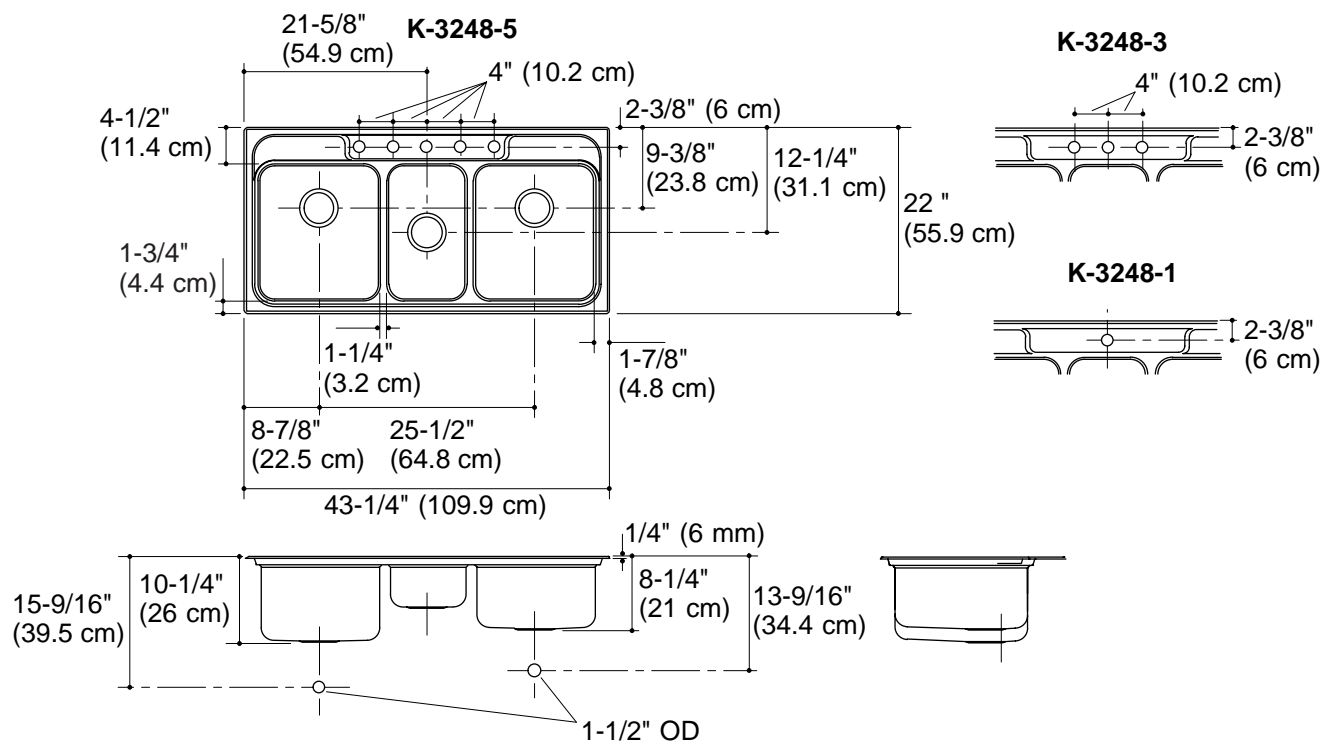
The self-rimming kitchen sink shall be 43-1/4" (109.9 cm) in length and 22" (55.9 cm) in width. Sink shall be made of 18 gauge stainless steel. Sink shall be triple compartment with two equal basins and one smaller center basin. Sink shall be 5-hole (-5), 3-hole (-3), or single-hole (-1). Sink shall include installation hardware. Sink shall be Kohler Model K-3248-\_\_\_\_\_.

## Technical Information

Fixture*:	Basin area	Water depth
Sink, left	14" (35.6 cm) x 16" (40.6 cm)	9-1/4" (23.5 cm)
Disposal	9" (22.9 cm) x 16" (40.6 cm)	5-1/4" (13.3 cm)
Sink, right	14" (35.6 cm) x 16" (40.6 cm)	7-1/4" (18.4 cm)
Drain holes	3-5/8" (9.2 cm) D.	
Faucet holes	1-7/16" (3.5 cm) D.	
* Approximate measurements for comparison only.		
Included components:		
Fastener pack		1023180

## Installation Notes

Install this product according to the installation guide.  
Cutout is 42-3/4" (108.6 cm) x 21-1/2" (54.6 cm) with  
1/2" (1.3 cm) radius corners.



## Product Diagram